

HALLWAY

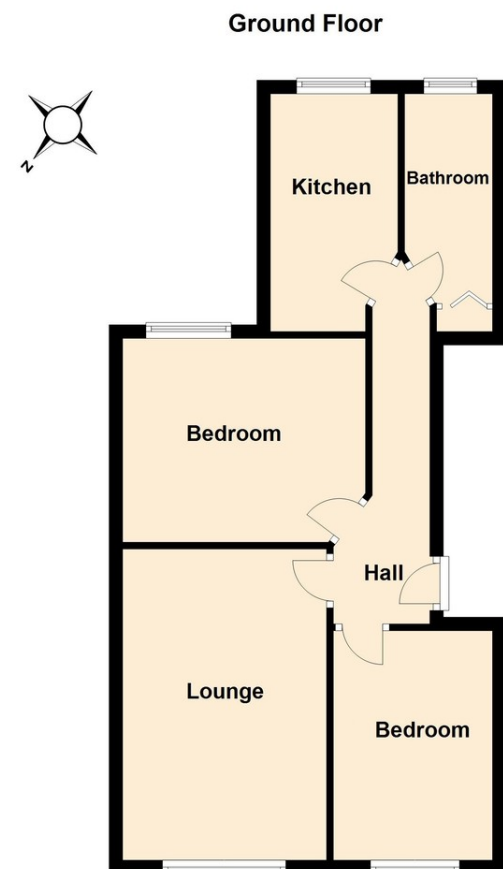
LOUNGE
14' 8" x 8' 9" (4.47m x 2.67m)

KITCHEN
11' 6" x 5' 6" (3.51m x 1.68m)

BEDROOM
11' 9" x 10' (3.58m x 3.05m)

BEDROOM
11' 1" x 6' 7" (3.38m x 2.01m)

BATHROOM



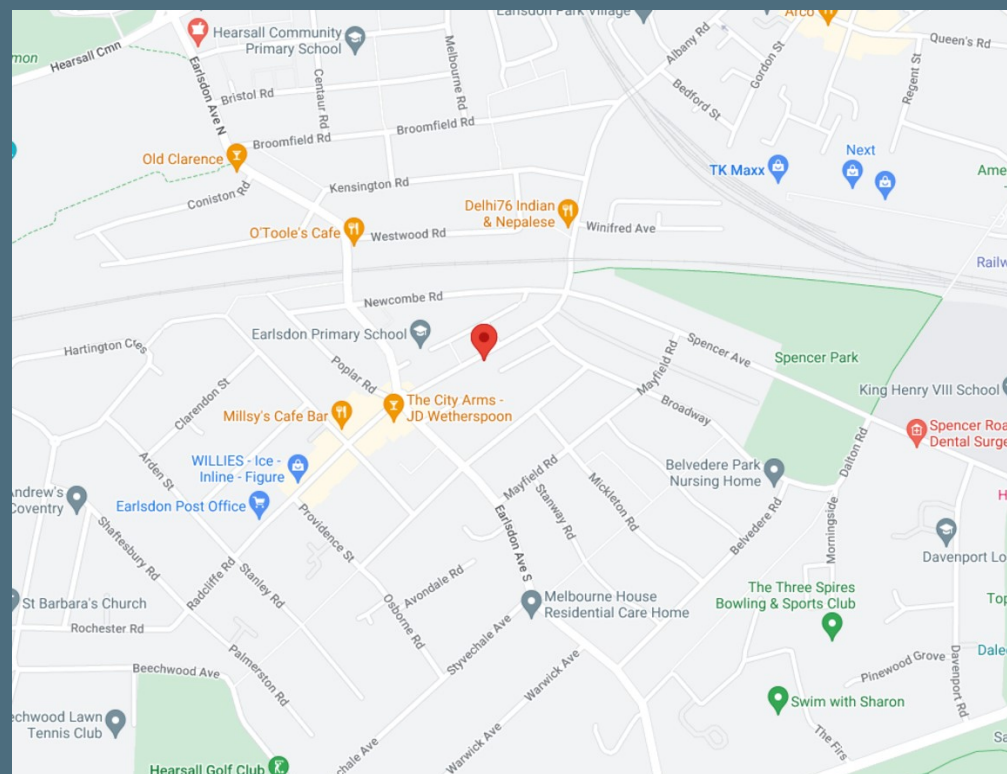
191 Albany Road
Earlsdon, Coventry, CV5 6NF

£137,000



Contact us at
455b - 457 Holyhead Road Coundon Coventry CV5 8HU
tel. 024 7659 1234 fax. 024 7659 9555

email. info@yeomanandowen.co.uk web. yeomanandowen.co.uk



IMPORTANT NOTICE
We take every care in preparing our sales details. They are checked and usually verified by the Vendor. We do not guarantee appliances, alarms, electrical fittings, plumbing, showers, etc., you must satisfy yourself that they operate correctly. Room sizes are approximate, they are taken in imperial and converted to metric, do not use them to buy carpets or furniture. We cannot verify the tenure, as we do not have access to the legal title, we cannot guarantee boundaries or rights of way, you must take the advice of your legal representative. If there is any point which is of particular importance to you, please contact the office and we will be pleased to check the information. Floor plans and compass are for guidance purposes only.



Property Description

A ground floor apartment which is ideal for a first time buyer or landlord investor. Located close to local shops and public transport links.

The property benefits from double glazing and electric heaters and in brief comprises: communal entrance with an intercom, hallway, lounge, kitchen, TWO BEDROOMS and a bathroom WC. Outside there is residents parking at the rear.

The property is leasehold with 144 years unexpired, a service charge of £714.00 per annum and a ground rent of £100.00 per annum.

NO UPWARD CHAIN.

MUST BE VIEWED.

£137,000

**191 Albany Road
Earlsdon, Coventry, CV5 6NF**

- Ground Floor Apartment
- Close to Shops & Public Transport Links
- Lounge
- Kitchen
- TWO BEDROOMS
- Bathroom WC
- Parking To The Rear
- NO UPWARD CHAIN
- Leasehold
- Council Tax Band A
- EPC Rating E

Viewing is strictly by appointment

