

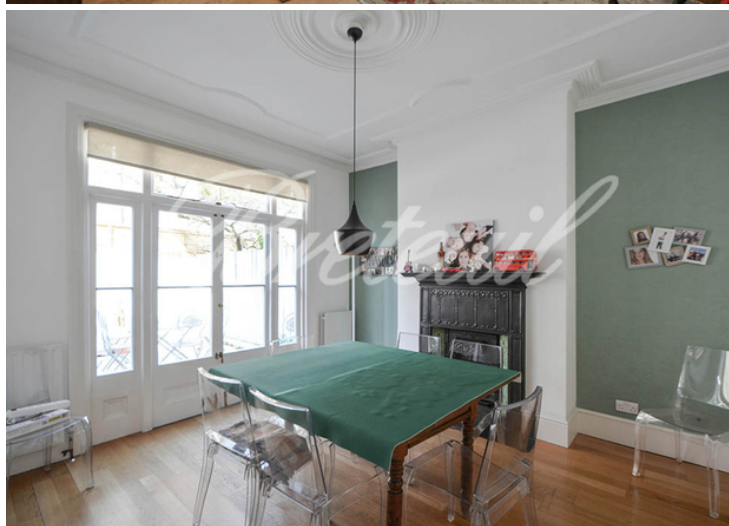
CLEVELAND AVENUE LONDON



£1,269 per week
TO LET

Breteuil
REMARKABLE HOMES

CLEVELAND AVENUE



- Four bedrooms
- Three bathrooms
- Wooden floor
- Large reception room
- Garden
- Available August 30, 2023
- EPC rating D
- Council tax band: G
- Min term: 12 months
- Deposit: 6 weeks

Situated within walking distance of Stamford Brook and Turnham Green tube, close to the many shops and restaurants of the High Road, a lovely four double bedroom family house with a large reception with wooden floors, second reception/dining room, modern kitchen with separate utility area, cloakroom and lovely decked garden on the ground floor. The first floor has three double bedrooms, one with an en suite, a family bathroom. The master bedroom is on the second floor and includes a walk in wardrobe and additional bathroom.

CLEVELAND AVENUE

Situated within walking distance of Stamford Brook and Turnham Green tube, close to the many shops and restaurants of the High Road, a lovely four double bedroom family house with a large reception with wooden floors, second reception/dining room, modern kitchen with separate utility area, cloakroom and lovely decked garden on the ground floor. The first floor has three double bedrooms, one with an en suite, a family bathroom. The master bedroom is on the second floor and includes a walk in wardrobe and additional bathroom.

£1,269 per week

TO LET

These particulars do not form part of any offer or contract and must not be relied upon as statements or representations of fact. Any areas, measurements or distances are approximate. The text, photographs and plans are for guidance only and are not necessarily comprehensive. It should not be assumed that the property has all the necessary planning, building regulation or other consents and we have not tested any services, equipment or facilities. Purchasers must satisfy themselves by inspection or otherwise.

Breteuil

REMARKABLE HOMES