

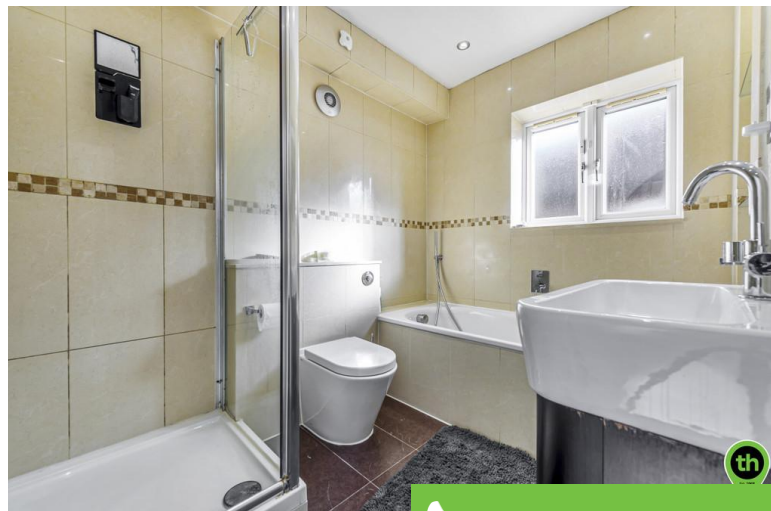


Hartland Drive, Edgware

Guide Price £800,000

An extended three bedroom semi-detached house offered to the market in turn key condition throughout benefiting a double reception leading to dining area and luxury appointed kitchen and utility room, double glazed doors to the attractive patio and lawned gardens, to the front there is off street parking for two and a garage..

The property has a four piece bathroom suite and a downstairs guest cloakroom. Hartland Drive is situated minutes from Edgwarebury Park in a quiet residential location with in Edgware's Eruv.

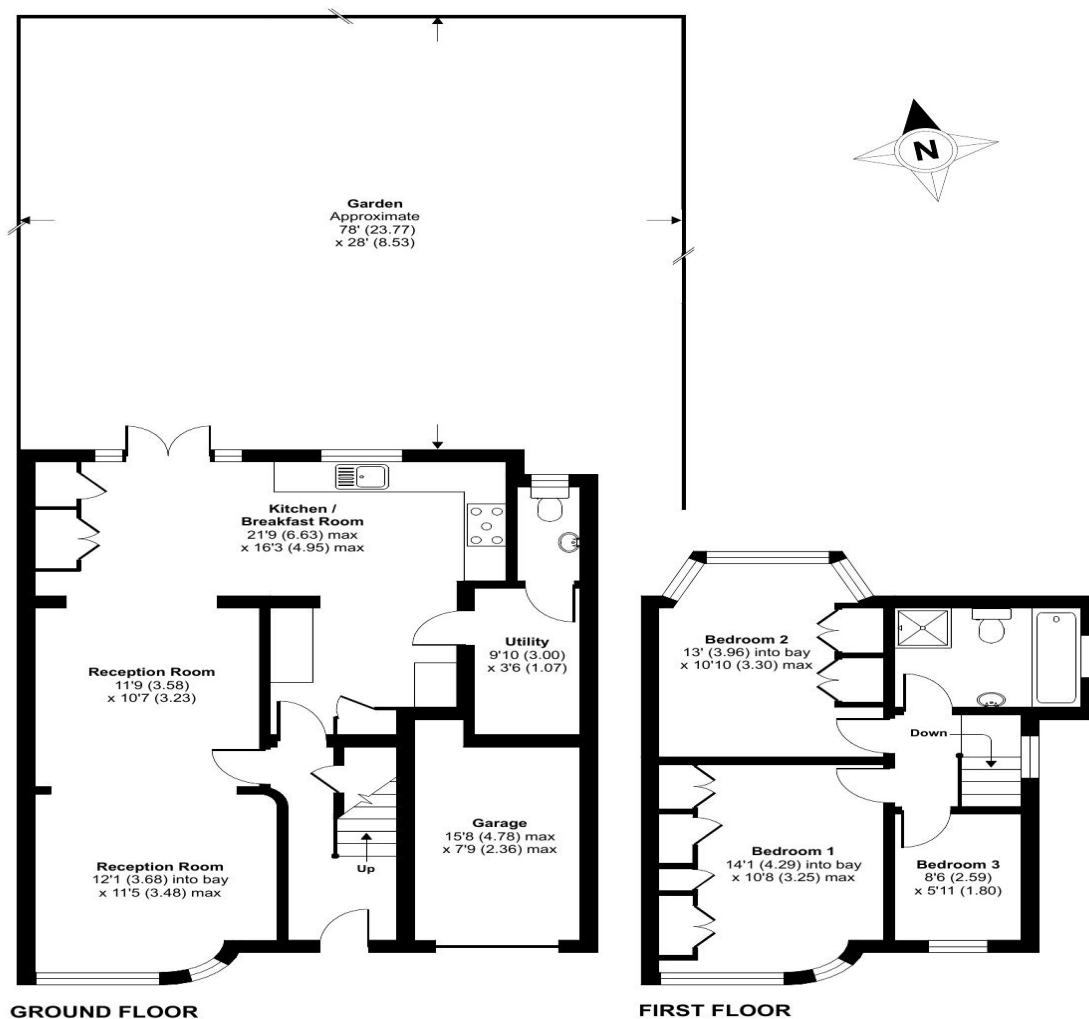


 020 8958 2222

Hartland Drive, Edgware, HA8

Approximate Area = 1286 sq ft / 119.5 sq m (includes garage)

For identification only - Not to scale



Floor plan produced in accordance with RICS Property Measurement Standards incorporating International Property Measurement Standards (IPMS2 Residential). © nichcom 2022. Produced for Taylor Hawkins. REF: 815740

58 Edgware Way
Edgware
Middlesex
HA8 8DJ

www.taylorhawkins.net
property@taylorhawkins.co.uk
020 8958 2222

Agents Note: Whilst every care has been taken to prepare these sales particulars, they are for guidance purposes only. All measurements are approximate are for general guidance purposes only and whilst every care has been taken to ensure their accuracy, they should not be relied upon and potential buyers are advised to recheck the measurements



Score	Energy rating	Current	Potential
92+	A		
81-91	B		81 B
69-80	C		
55-68	D	59 D	
39-54	E		
21-38	F		
1-20	G		