

Barley Road

Cheltenham GL52 3ND





Barley Road, Cheltenham GL52 3ND

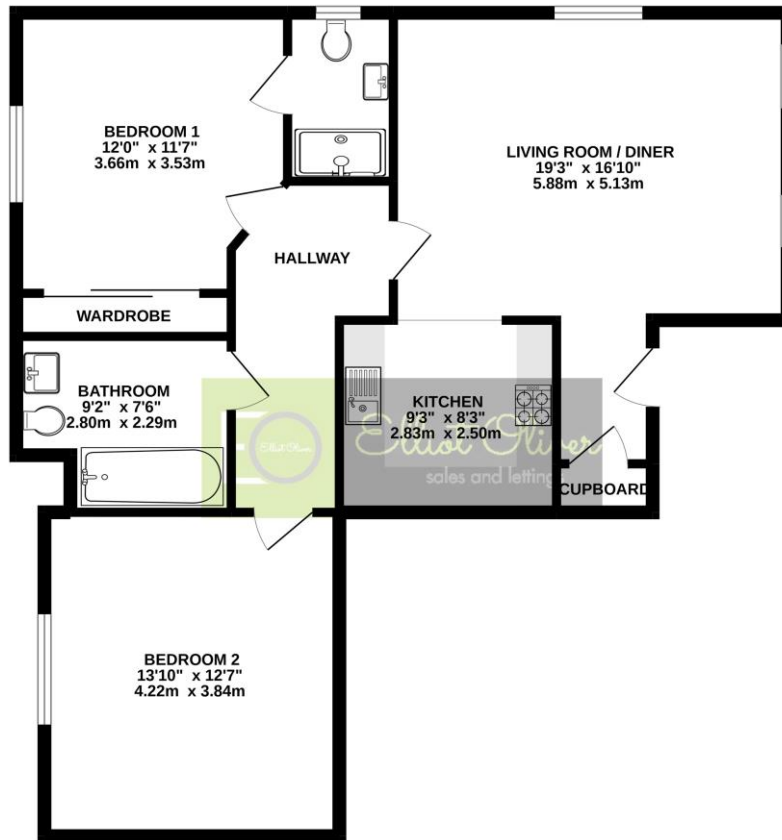
This two bedroom ground floor apartment is located in the Prestbury Chase Development and is beautifully presented throughout. The accommodation comprises of: a private entrance and entrance hall, a dual aspect open plan living room / diner, a kitchen with integrated appliances which include a fridge / freezer, oven, hob, dishwasher and washing machine, two double bedrooms with the main bedroom offering an en suite shower room and a family bathroom. The property further benefits from an allocated parking space and gas central heating.

Lease Length Remaining 120 Years
Service Charge £960 Per Annum
Ground Rent £240 Per Annum
Council Tax Band B






GROUND FLOOR
825 sq.ft. (76.6 sq.m.) approx.



TOTAL FLOOR AREA : 825 sq.ft. (76.6 sq.m.) approx.

Whilst every attempt has been made to ensure the accuracy of the floorplan contained here, measurements of doors, windows, rooms and any other items are approximate and no responsibility is taken for any error, omission or mis-statement. This plan is for illustrative purposes only and should be used as such by any prospective purchaser. The services, systems and appliances shown have not been tested and no guarantee as to their operability or efficiency can be given.
Made with Metropix ©2022

Energy Efficiency Rating

	Current	Potential
Very energy efficient - lower running costs		
(92-100) A		
(81-91) B	84	84
(69-80) C		
(55-68) D		
(39-54) E		
(21-38) F		
(1-20) G		
Not energy efficient - higher running costs		
England, Scotland & Wales		EU Directive 2002/91/EC 

Address:

Barley & 1/4



OFFICE

101 Promenade,
Cheltenham,
Gloucestershire, GL50
1NW
info@elliottoliver.co.uk

Agents Note: Whilst every care has been taken to prepare these sales particulars, they are for guidance purposes only. All measurements are approximate are for general guidance purposes only and whilst every care has been taken to ensure their accuracy, they should not be relied upon and potential buyers are advised to recheck the measurements