



£1,595 pcm Fees Apply

To Let

3 Bedrooms Apartment

Secure Gated Parking

Noel Court East Croydon



www.martincolondon.com

MARTIN&CO

0208 688 8565

croydon@martinco.com

145 Brighton Road, South Croydon, Surrey, CR2 6EF

To Let

£1,595 pcm Fees Apply

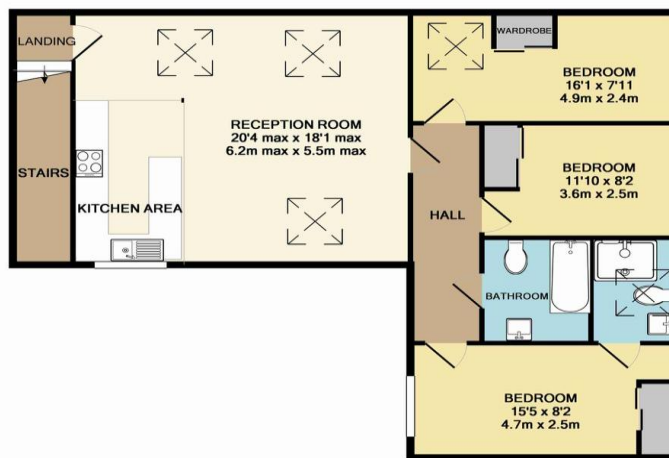
3 Bedrooms Apartment

STUNNING NEW APARTMENT! Be the first to live in this beautiful first floor 3 bedroom flat JUST 10 MINUTES FROM EAST CROYDON STATION. Private entrance, HUGE 20' double height reception room, fully fitted kitchen, MASTER BEDROOM WITH EN-SUITE, 2 further bedrooms, luxury bathroom, AVAILABLE NOW!

- Brand New Apartment
- 3 Bedrooms/2 'Bathrooms'
- Huge Open-Plan Living Space
- Private Entrance
- Gas Heating
- Luxury Kitchen with Dishwasher
- Available Now!
- Deposit: £1,595
- EPC Rating: TBC



ENTRANCE FLOOR
APPROX. FLOOR
AREA 88 SQ.FT.
(8.3 SQ.M.)



1ST FLOOR
APPROX. FLOOR
AREA 946 SQ.FT.
(87.9 SQ.M.)

TOTAL APPROX. FLOOR AREA 1014 SQ.FT. (94.2 SQ.M.)

Whilst every attempt has been made to ensure the accuracy of the floor plan contained here, measurements of doors, windows, rooms and any other items are approximate and no responsibility is taken for any error, omission, or mis-statement. This plan is for illustrative purposes only and should be used as such by any prospective purchaser. The services, systems and appliances shown have not been tested and no guarantee as to their operability or efficiency can be given.

Made with Metropix ©2015



www.martincolondon.com

MARTIN & CO

0208 688 8565

croydon@martinco.com

145 Brighton Road, South Croydon, Surrey, CR2 6EF