



Queensway, Petts Wood

Freehold

£700,000

This largely extended, 3/4 bedroom semi detached family home is positioned centrally for Petts Wood mainline station and very conveniently for a host to local shops and the outstanding Crofton infant and junior schools. The property has been extended to the rear and the accommodation comprises a bay fronted lounge to the front, a dining room and kitchen to the rear, which could be made into a large kitchen/diner. There is a 3rd reception room to the side which could be utilised as a study/home office or as a treatment room as it benefits from its own front door. On the ground floor there is a handy W.C. The first floor offers three good size bedrooms and a family bathroom. However, it is to be noted bedroom two could easily be made into two bedrooms as there is a lobby/study connected to it. Externally the garden is very secluded and extends to approximately 90'. To the front there is a block paved driveway offering off road parking. Call now to arrange your viewing of this spacious family home.

Property Features

- Semi detached house
- 3/4 Bedrooms
- 3 Reception rooms
- 90' Garden
- Off road parking
- Very close to Petts Wood station
- Crofton school catchment

Property Description

FRONT

Block paved driveway providing off street parking for 2 vehicles leading up to:

PORCH

Covered porch with access into:

HALLWAY

Under stairs storage cupboard, radiator and wood flooring.

LOUNGE

12' 10" x 11' 9" (3.91m x 3.58m)

Double glazed bay window to the front. Wood flooring. Radiator.

DINING ROOM

19' 11" x 9' 1" (6.07m x 2.77m)

Double glazed French doors to the rear. Two radiators and wood flooring.

KITCHEN

15' 3" x 6' 4" (4.65m x 1.93m)

Double glazed window to rear plus door to side. An extensive range of wall and base units with roll top work surfaces. Built in oven, four burner gas hob and fitted extractor over. Stainless steel sink unit with mixer taps and drainer to side. Space and plumbing for washing machine. Part tiled walls, built in fridge and freezer. Tiled floor.

RECEPTION THREE

14' 5" x 8' 10" (4.39m x 2.69m)

UPVC door to front plus double glazed windows to front. Fitted wash hand basin with mixer tap and laminate flooring.

GROUND FLOOR WC

Low level W.C. and laminate flooring.

STAIRS TO FIRST FLOOR

FIRST FLOOR LANDING

Laminate flooring and loft hatch.





BEDROOM ONE

13' 6" into bay x 10' 6" recess (4.11m x 3.2m)

Double glazed windows to front. A range of built in wardrobes and wood flooring.

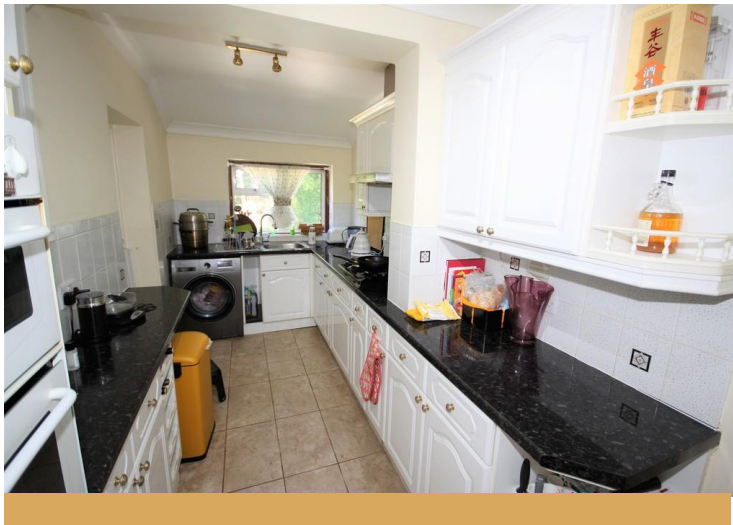
ENSUITE

Walk in shower cubicle with thermostatic shower and a wall mounted wash hand basin.

STUDY

8' 4" x 6' 7" (2.54m x 2.01m)

Double glazed window to rear. Cupboard housing Worcester Bosch boiler. Wood flooring and a door leading into:



BEDROOM TWO

17' 7" x 9' 1" (5.36m x 2.77m)

Double glazed windows to front and rear. Radiator and wood flooring.

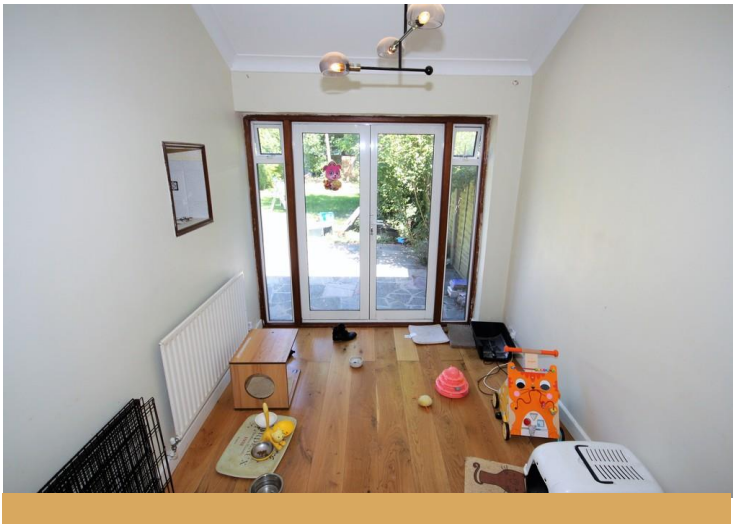
BEDROOM THREE

10' 5" x 8' 2" (3.18m x 2.49m)

Double glazed window to rear. A range of built in wardrobe units, wood flooring and radiator.

BATHROOM

Double glazed window to side plus a port hole window to front. Three piece suite comprising a corner bath with mixer taps and shower attachment. Low level wc, vanity wash hand basin, tiled floor, tiled walls and radiator.



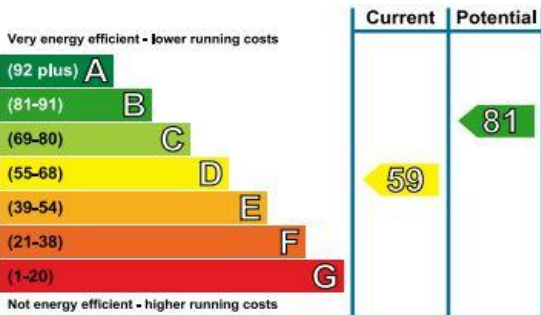
GARDEN

90' 0" (27.43m)

Mainly laid to lawn with a range of mature trees, shrubs and well stocked borders.

DIRECTIONS

From Petts Wood, Station Square, proceed down Fairway and right into Tudor Way. Right at mini-roundabout into Queensway.





GROUND FLOOR



1ST FLOOR

Made with Metropix ©2020

Local Authority: Bromley London Borough Council
Council Tax Band: Band F
Viewings: Strictly by appointment only



rightmove  Zoopla.co.uk

26 Station Square
 Petts Wood
 Kent
 BR5 1NA

Tel: 01689 819991
 Email: pettswood@edmund.co.uk
 Web: www.edmund.co.uk

Agents Note: Whilst every care has been taken to prepare these particulars, they are for guidance purposes only. All measurements are approximate and are for general guidance purposes only and whilst every care has been taken to ensure their accuracy, they should not be relied upon and potential buyers are advised to recheck the measurements. Full EPC Certificate available upon request.