



we are
morfittsmith

Whitehouse Lane,
Walkley,
Sheffield,
S6 2UZ



A magnificent 3-bed maintained to an exacting standard throughout: Whitehouse Lane.

Boasting substantial living space and two allocated parking spaces, this stunning Walkley home truly speaks for itself.





Time to explore.

Whitehouse Lane is positioned in a prime spot just down the hill from the ever-popular community of Walkley. It rests amongst the peaceful streets between South Road, the vibrant thoroughfare of the suburb, and the highly convenient Penistone Road. There are excellent transport links via these two routes and reliable bus services which take you right across Sheffield, meaning that commuting and exploring the Steel City are exceptionally convenient from this spot. This also affords you peerless access to an array of charming amenities in the local area, ranging from charming cafés and restaurants to a florist and a local farm shop. The property is well positioned to enjoy a host of green spaces including Bolehills Park, Burnaby Green, and Ruskin Park just at the end of the road. Whitehouse Lane even boasts two allocated parking spaces, making this an ideal choice for luxurious professional life.



Step inside your new home.

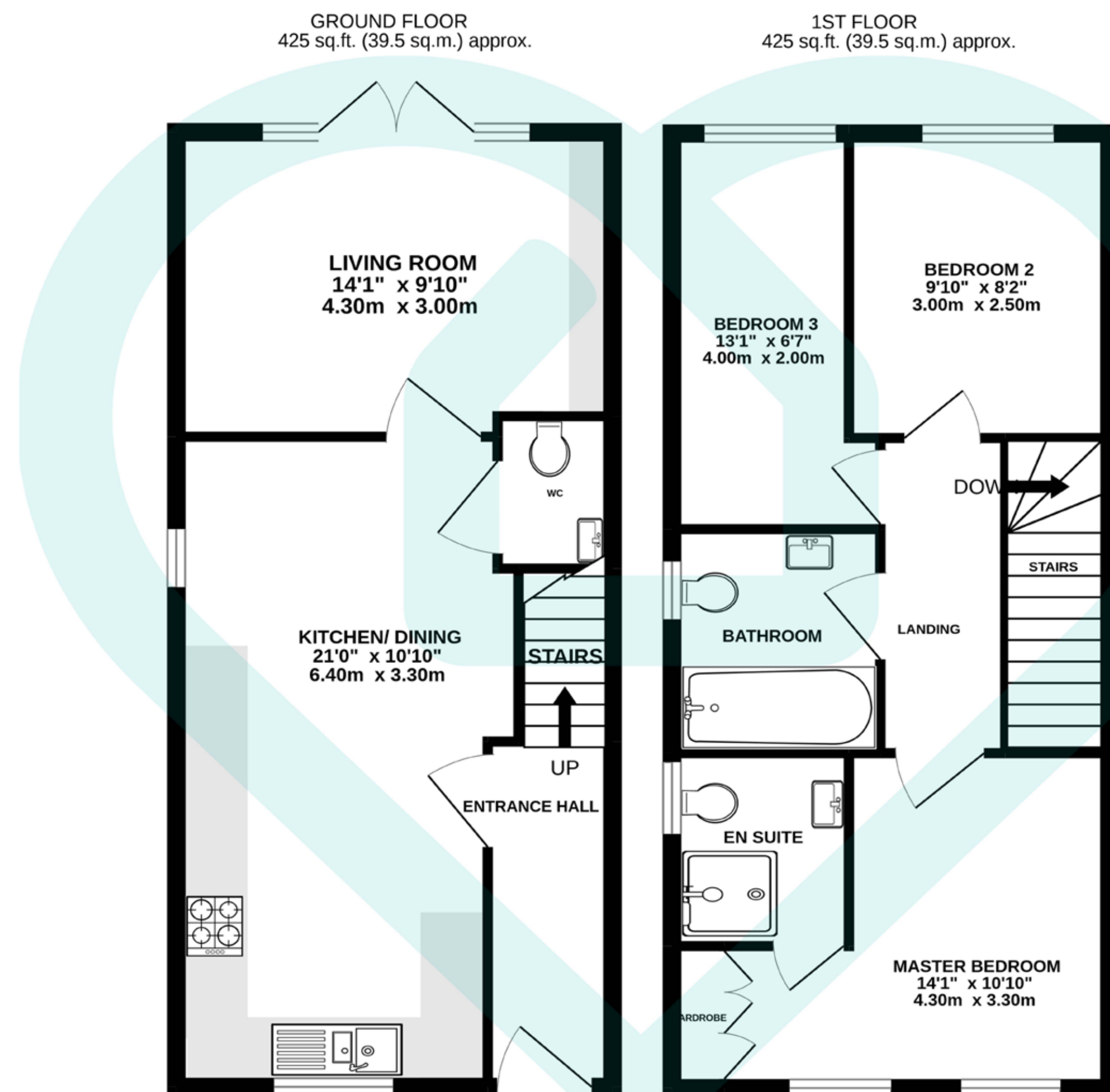
This stunning development was recently sold out by MorfittSmith, but thanks to a change in circumstances and the vendors moving away, one of these prestigious properties has become available again. You enter the property through a long hallway with stairs taking you up to the first floor. To the left you enter the kitchen/diner, an excellent size with immaculate neutral décor and attractive downlights. At one end is a lavish fitted kitchen boasting a full suite of contemporary appliances and ample worktops for preparing food. At the other end of the large room is a generous dining area that can easily accommodate a large table and chairs. The open-plan layout of this space makes it a superb venue for social events such as having guests over or sharing family meals. There is even a practical WC under the stairs. At the back of the ground floor, you enter the living room, a beautiful full-width space with plush carpeting and lots of room for comfy seating. A fitted storage unit spans one wall, giving you the perfect space for storing books and entertainments.

French doors lead out to the luscious rear garden which encompasses a pretty lawn, a stone-flagged patio with a pathway and external storage. This is a superb environment for dining outdoors or simply relaxing in the sunshine. Back inside, the first floor boasts the lavish family bathroom and three bedrooms: two gorgeous doubles and a third that would also make a wonderful home office. Bedroom 1 even boasts its own dressing area with fitted wardrobes and an ensuite shower room. The family bathroom completes the floorplan, featuring a pristine three piece suite with a luxurious waterfall showerhead, abundant space for storage, and a practical heated towel rail. This property has been lovingly maintained during its only occupancy, affording you an excellent calibre of professional living.









This floor plan is for illustrative purposes only. All measurements and layouts are approximations and do not necessarily capture the precise specifications of the property. No responsibility is taken for any error, omission, or misstatement. We always recommend viewing in person to confirm the exact floor



Score	Energy rating	Current	Potential
92+	A	84 B	96 A
81-91	B		
69-80	C		
55-68	D		
39-54	E		
21-38	F		
1-20	G		

IMPORTANT: we would like to inform prospective purchasers that these sales particulars have been prepared as a general guide only, A detailed survey has not been carried out, nor the services, appliances and fittings tested. Room sizes should not be relied upon for furnishing purposes and are approximate. If floor plans are included, they are for guidance only and illustration purposes only and may not be to scale. If there are any important matters likely to affect your decision to buy, please contact us before viewing the property.



The MorfittSmith Building,
67 Middlewood Road,
Sheffield, S6 4GX



0114 232 1764



www.morfittsmith.co.uk



sales@morfittsmith.co.uk



lettings@morfittsmith.co.uk



newhomes@morfittsmith.co.uk



@morfittsmith



@morfittsmith



MorfittSmith Estate & Letting Agent



morfittsmith



sales | lettings | new homes
