







## Property Summary

For sale. Three/Four bedroom, two bathrooms. Extended end of terrace family home situated on a quiet street with a town garden. Near Peckham Rye and Queens Road station. 1158 sq ft.

## Property Features

- FOUR BEDROOMS
- TWO BATHROOMS
- DOWNSTAIRS CLOAKROOM
- 1 X DOWNSTAIRS BEDROOM
- BIG KITCHEN OPEN LIVING ROOM
- THREE BEDROOMS UPSTAIRS
- UPSTAIRS BATHROOM
- GARDEN
- CENTRAL LOCATION
- REFURBISHED





## DESCRIPTION

For sale is this three to four bedroom end of terrace house with two bathrooms. The house has been extended and features a feature open plan kitchen and living room with doors direct onto the garden which is exactly what we know most of you are looking for.

The layout of the house is versatile and would suit someone with a need for a ground floor bedroom and shower room because, three bedrooms and a modern family bathroom are upstairs and the fourth bedroom and ensuite is downstairs.

The outside space is very modern and faces west. The house is located on the corner of a cul-de-sac, which is ideal for both Peckham Rye & Queens Road stations. Totalling 1158sqft of high specification. Burgess Park is just 0.4 mile.

For sale with no onward chain. #AskBeaumont

## DISTANCES

Distances are taken from [googlemaps.co.uk](https://www.googlemaps.co.uk). They are approximate and are to be used as rough guide only.

Peckham Rye Station 0.6 Mile

Queens Road Station 0.8 Mile

Old Kent Road (buses) 0.5 Miles

Burgess Park 0.4 Miles

## AGENTS NOTE

Council tax: Southwark Council Tax Band 'D'.

This property is currently rented. Viewings are by the generous appointment of the tenant.

The house is being sold with vacant possession and no chain.





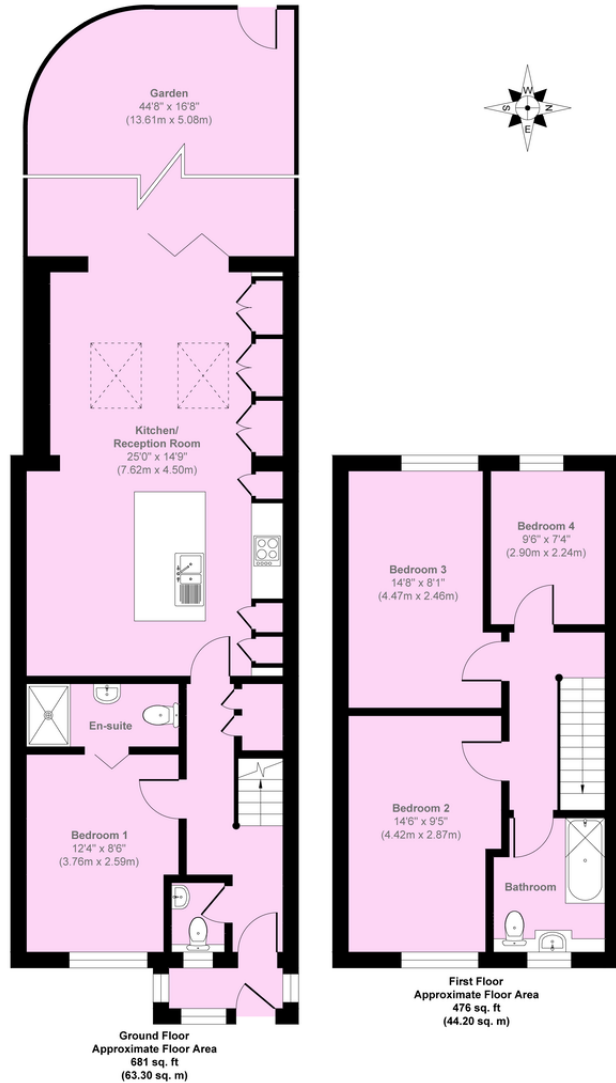








Radnor Road, London, SE15 6UR



Approx. Gross Internal Floor Area 1157 sq. ft / 107.50 sq. m

Illustration for identification purposes only, measurements are approximate, not to scale.  
Copyright © markbeaumont.com  
Produced by Elements Property

Score	Energy rating	Current	Potential
92+	A		
81-91	B		85   B
69-80	C	74   C	
55-68	D		
39-54	E		
21-38	F		
1-20	G		