

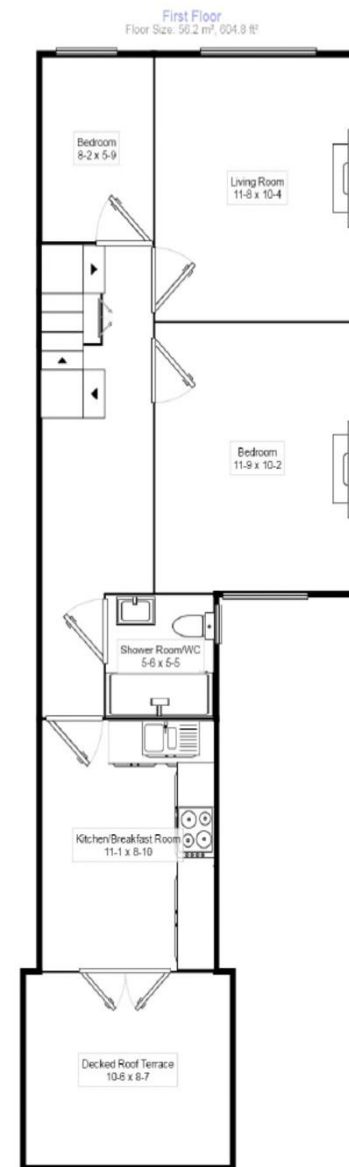


- Three Bedrooms
- Two Bath/Shower Rooms
- Private Garden
- Council Tax Band - C

187 A Kneller Road, Twickenham, TW2 7DY

£2,200 pcm

Beautifully presented and elegant split-level apartment, situated in a pretty residential road opposite Murray Park and within short walking distance of two mainline stations with frequent, fast trains to Waterloo. The property falls within the catchment area of many highly rated London Borough of Richmond Schools. The apartment offers a mix of traditional and contemporary living with the first floor comprising of a front reception with a large window, feature fireplace and built-in storage. An eat in kitchen with double French doors leading out onto a large sunny terrace and stairs leading down to a private garden. Two bedrooms and a modern shower room are situated on this level, with stairs leading up to a generous master bedroom and en-suite bathroom with free standing bath and double vanity. EPC Rating - D



16 Kew Green, Richmond,
Surrey, TW9 3BH

www.priorymanagement.co.uk
0208 940 4555
lettings@priorylm.com

Agents Note: Whilst every care has been taken to prepare these sales particulars, they are for guidance purposes only. All measurements are approximate and for general guidance purposes only and whilst every care has been taken to ensure their accuracy, they should not be relied upon and potential buyers are advised to recheck the measurements