

18 Robinson Court



18 Robinson Court

Three bedroom apartment

This apartment located on the second floor has a spacious dual aspect living/dining room with French doors which open onto a private balcony with hillside views. The kitchen has integrated appliances including a Quooker tap for instant boiling water. The main bedroom has fitted wardrobes and an en suite shower room. There is a second double bedroom plus a further room which could be used as either a bedroom, dining room or study.

Property specifications

- Dual aspect living/dining room with access to balcony
- Separate guest bathroom
- Electric underfloor heating
- Stylish kitchen with integrated appliances
- Large master bedroom with fitted wardrobes and en suite shower room
- Spacious hallway with storage cupboards
- Centrally located within the village
- Allocated parking space

£475,000 (other fees apply)

Monthly management fee £801.12

Annual ground rent £250

Bistro Credit £72.68

Council Tax Band: D

Viewing by appointment with the sales office.

01629 733 337

stelphinssales@audleyvillages.co.uk

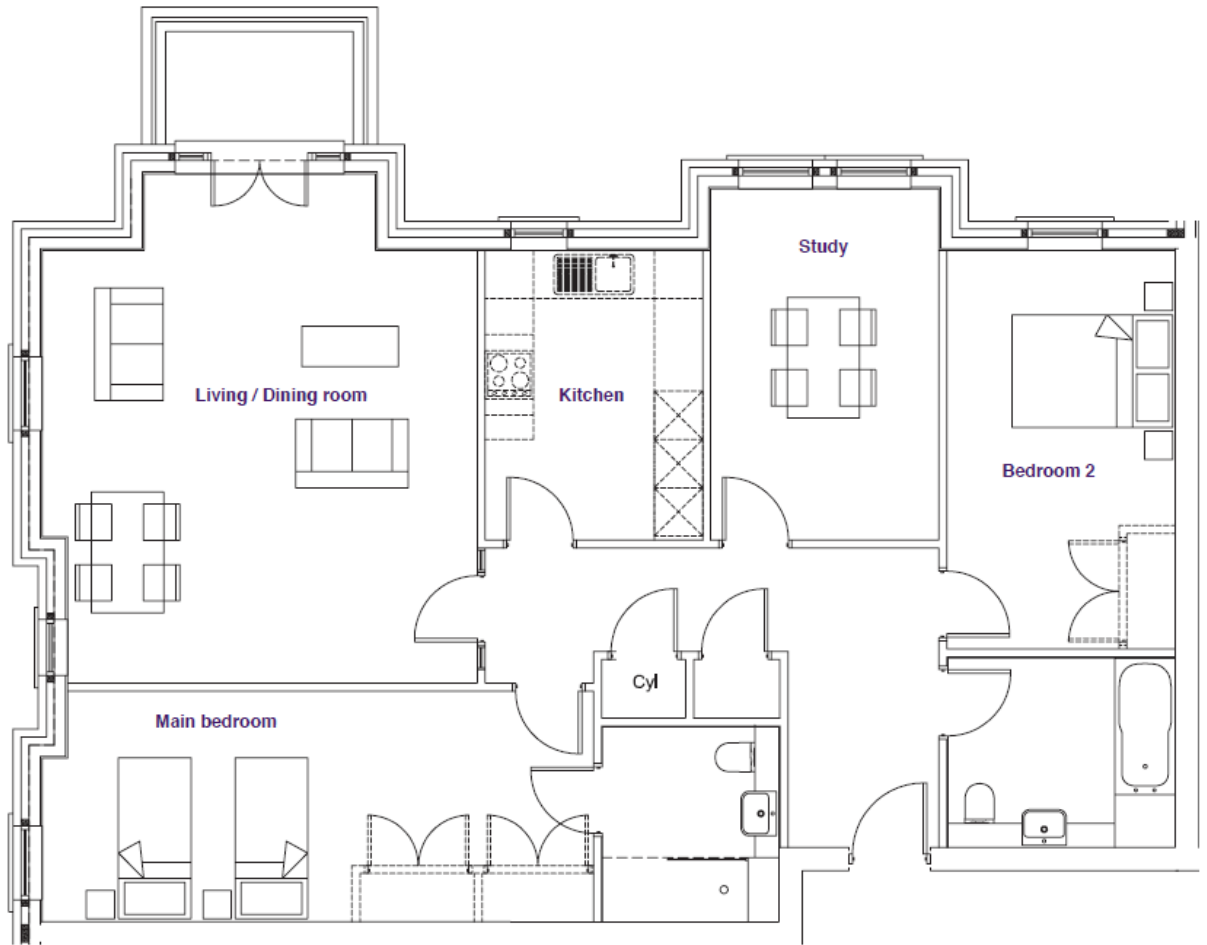
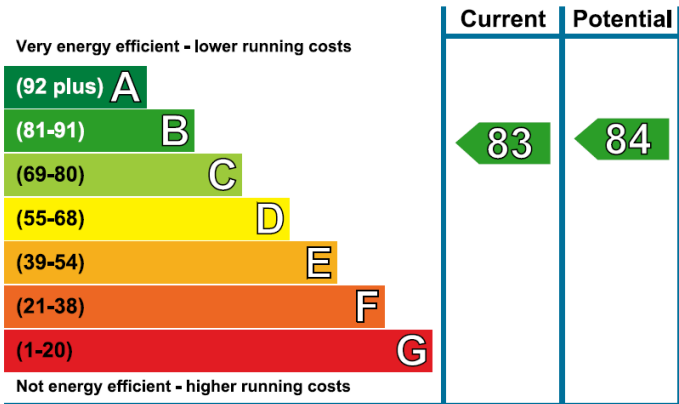


18 Robinson Court

Internal Measurements

	Metric (m)	Imperial (ft)
Living/Dining Room	5.05 x 5.40	16'6" x 17'8"
Kitchen	2.70 x 3.60	8'10" x 11'9"
Main Bedroom	6.70 x 2.85	21'11" x 9'4"
Bedroom 2	4.95 x 2.85	16'2" x 9'4"
Bedroom 3 / Study	2.90 x 3.60	9'6" x 11'9"
Total Sq. Ft:	1,258	

Built in wardrobes in bedrooms have not been included in the overall dimensions. Maximum measurements shown.



These pages are intended for marketing purposes only. Designs vary according to plot and all details should be checked at the Sales office. August 2021

