

14 Devonshire Court



14 Devonshire Court

Two bedroom apartment

A beautifully presented two double bedroom apartment located on the first floor of Devonshire Court. The main bedroom benefits from fitted wardrobes and an en suite shower room. The spacious kitchen features integrated SieMatic appliances and the living room has double French doors opening onto a private balcony with hillside views.

Property specifications

- Private balcony with views of the hillside
- Spacious SieMatic kitchen with integrated appliances and ample room for a breakfast table.
- Main bedroom with fitted wardrobes and walk in en suite shower room
- Separate guest bathroom
- Located centrally within the village with easy access to the facilities and allotments.
- Allocated parking space

£355,000 (other fees apply)

Monthly management fee £798.14

Annual ground rent £500

Bistro Credit £72.68

Council Tax Band: D

Viewing by appointment with the sales office.

01629 733 337

stelphinssales@audleyvillages.co.uk

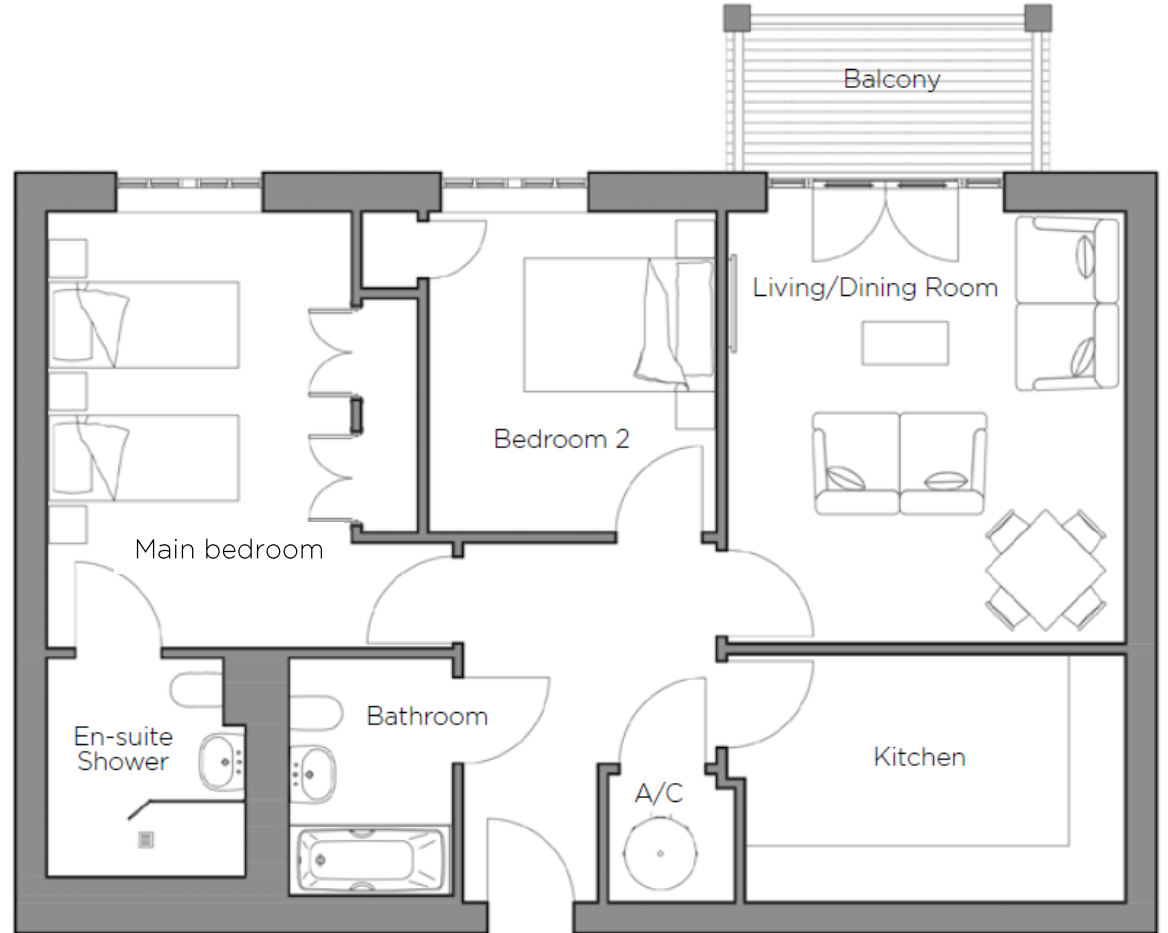


14 Devonshire Court

Internal Measurements	Metric (m)	Imperial (ft)
Living/Dining Room	4.56 x 4.21	15'0" x 13'10"
Kitchen	4.02 x 2.62	13'2" x 8'7"
Main Bedroom	4.61 x 3.22	15'1" x 10'7"
Bedroom two	3.39 x 3.05	11'1" x 10'0"
Balcony (approx.)	3.00 x 1.51	9'10" x 4'11"

Total Sq.Ft 892

Built in wardrobes in bedrooms have not been included in the overall dimensions. Maximum measurements shown.



Score	Energy rating	Current	Potential
92+	A		
81-91	B	83 B	83 B
69-80	C		
55-68	D		
39-54	E		
21-38	F		
1-20	G		

These pages are intended for marketing purposes only. Designs vary according to plot and all details should be checked at the Sales office. August 2021

