

23 Inglewood House



23 Inglewood House

Two bedroom ground floor apartment

Located in the main house close to the Audley Club this attractive, ground floor apartment has two double bedrooms with the main bedroom benefitting from double fitted wardrobes and en suite shower room.

The contemporary kitchen includes integrated appliances and leads onto the spacious living/dining room which has direct access onto a private terrace with countryside views.

Property specifications

- Open aspect with countryside views
- Main bedroom with fitted wardrobes and en suite shower room
- Modern kitchen with integrated appliances
- Second double bedroom
- Separate guest bathroom
- Close proximity to the main facilities

Guide Price £625,000 (other fees apply)

Monthly management fee £833.13

Bistro credit £64.08

Annual ground rent £250

Council Tax Band: E

Viewing by appointment with the sales office.

01488 682 100

inglewoodsales@audleyvillages.co.uk



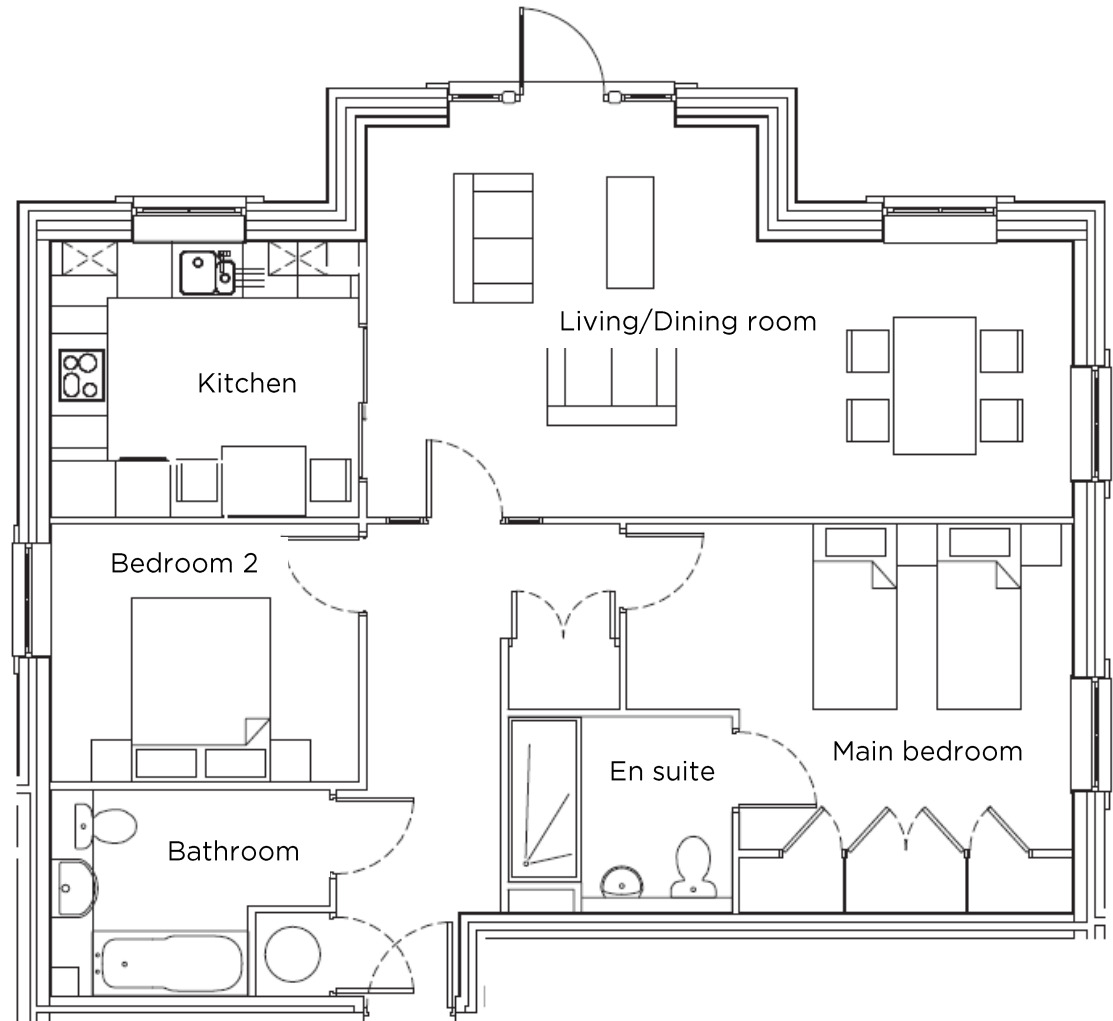
23 Inglewood House

Internal Measurements

	Metric (m)	Imperial (ft)
Kitchen	3.35 x 3.00	11'0" x 9'10"
Living/dining room	4.25 x 7.70	13'11" x 25'3"
Main bedroom	4.85 x 4.20	15'11" x 13'9"
Bedroom two	3.35 x 2.80	11'0" x 9'2"
Total Sq. ft 921		

Built in wardrobes in bedrooms have not been included in the overall dimensions. Maximum measurements shown.

Score	Energy rating	Current	Potential
92+	A	92 A	92 A
81-91	B		
69-80	C		
55-68	D		
39-54	E		
21-38	F		
1-20	G		



These pages are intended for marketing purposes only. Designs vary according to plot and all details should be checked at the Sales office. December 2021

