

Substantial 4 bedroom Victorian house with many original features.

It is quite rare to find an Edwardian house with so many original features retained. The moment you enter this elegant property you see the gorgeous Maple wood flooring, stripped doors and imposing staircase. The reception rooms are both spacious and have Edwardian fireplaces. At the rear the kitchen/breakfast room has had an extension with a triple glazed mono pitch roof flooding it with light. Upstairs you will find 4 generous bedrooms and the family bathroom. The basement could provide a great home office if required. Central Reigate location,



CHAIN FREE

GUIDE PRICE

£1,375,000



14 Belmont Road, Reigate, Surrey, RH2 7EE



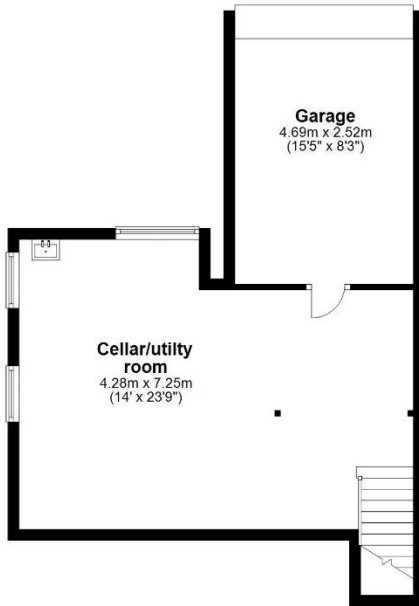
PRS Property
Redress
Scheme

- 4 spacious bedrooms
- Bathroom and ground floor shower room.
- Two reception rooms with Edwardian fireplaces.
- Kitchen/breakfast room.
- Large, dry and heated basement/utility room.
- Central Reigate location.

- Single garage.
- Walking distance to Reigate town centre and train station.
- Beautiful mature garden.
- **CHAIN FREE**

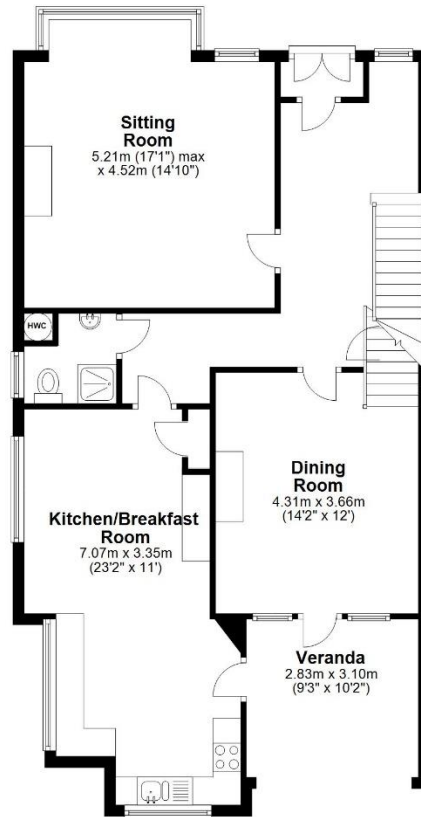
Basement

Approx. 35.9 sq. metres (386.8 sq. feet)



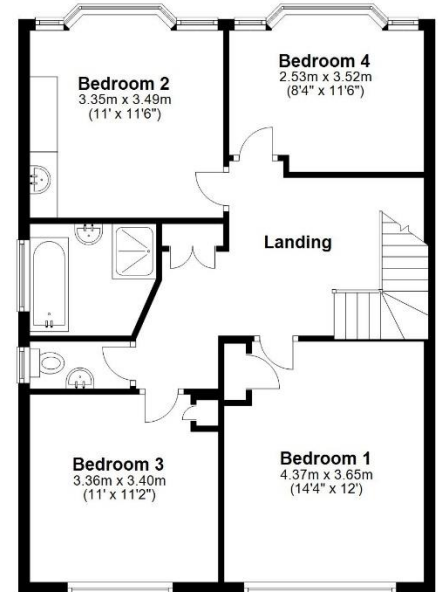
Ground Floor

Approx. 92.0 sq. metres (990.8 sq. feet)



First Floor

Approx. 70.9 sq. metres (763.6 sq. feet)



Total area: approx. 198.9 sq. metres (2141.2 sq. feet)

Produced by Lewis White, not to scale and indicative only
Plan produced using PlanUp.

Council tax band: G

EPC Rating: Awaited



PRS Property Redress Scheme

lewis white

Lewis White Estate Agents Ltd, Sommers House, Linkfield Corner, Redhill, RH1 1BB
www.leiwswhite.net info@lewiswhite.net

01737 245779