



Warren House, Beckford Close, London, W14 8TW

Asking Price Of: £850,000



Underground secure parking | Balcony | 24 hour Concierge | South facing | Resident gym | 8 mins walk to Earls Court Station | Short Walk to Kensington High Street

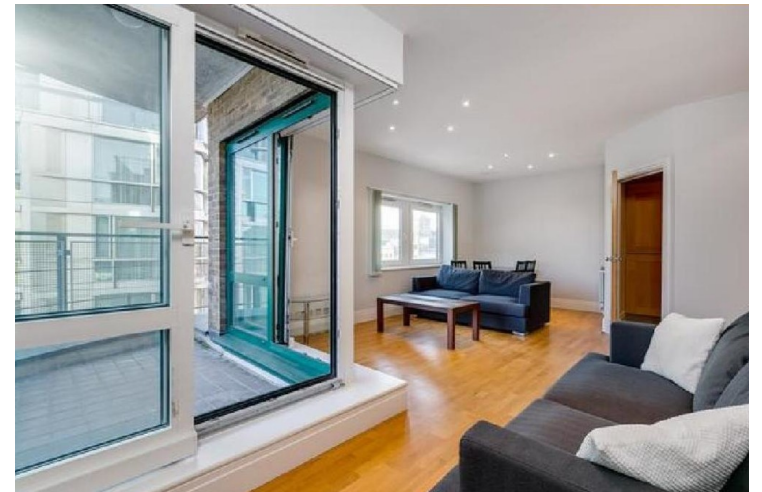
DESCRIPTION

A south facing apartment on the 6th floor (with lift) of a well maintained purpose-built building in Kensington. The property boasts a south facing reception with balcony, two double bedrooms with built-in storage, en-suite shower room, a family bathroom and a fully equipped kitchen. The property benefits from wooden flooring throughout, a 24 hour concierge service, secure underground parking and a residents gym. Ideally situated close to all the amenities of High Street Kensington and Earl's Court.

KEY FEATURES

- Underground secure parking
- Balcony
- 24 hour Concierge
- South facing
- Resident gym
- 8 mins walk to Earls Court Station
- Short Walk to Kensington High Street



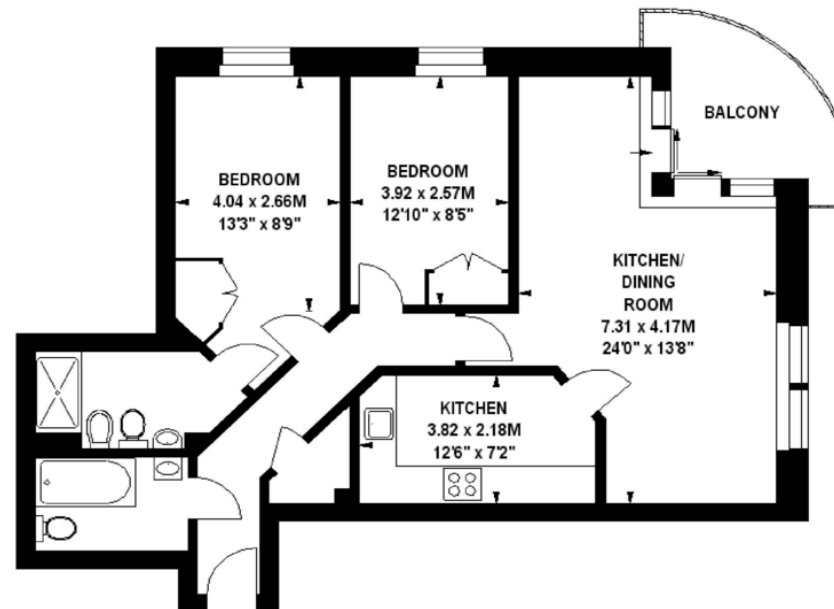
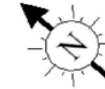




Warren House, W14

Approximate gross internal area

75.81 sq m / 816 sq ft



Sixth Floor

Illustration For Identification Purposes Only. Not To Scale

*Floorplan Drawn According To RICS Guidelines

Copyright of FeaturePRO

ADDITIONAL INFORMATION

Tenure: Leasehold

Local Authority: Kensington and Chelsea Royal

Borough Council

Sherwoods International Properties | 70 Pembroke Road, Kensington, London, W8 6NX |

info@sherwoodsproperty.co.uk | www.sherwoodsproperty.co.uk | Tel: +44 203 962 9980 |

Sherwoods

