

TO LET



Cheltenham Road, Gloucester

4 Bedrooms, 2 Bathroom, Detached House

£1,850 pcm



Cheltenham Road, Gloucester

4 Bedrooms, 2 Bathroom

£1,850 pcm

Date available: Available Now

Deposit: £2,134

Unfurnished

Council Tax band: F

- Family Home
- Detached
- Four Bedrooms
- Bathroom & Shower Room
- Large Modern Kitchen
- Three Reception Rooms
- Enclosed Rear Garden



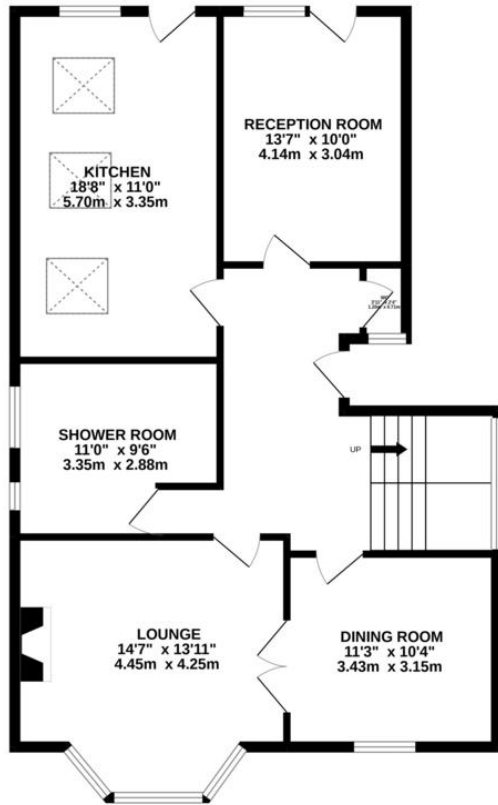




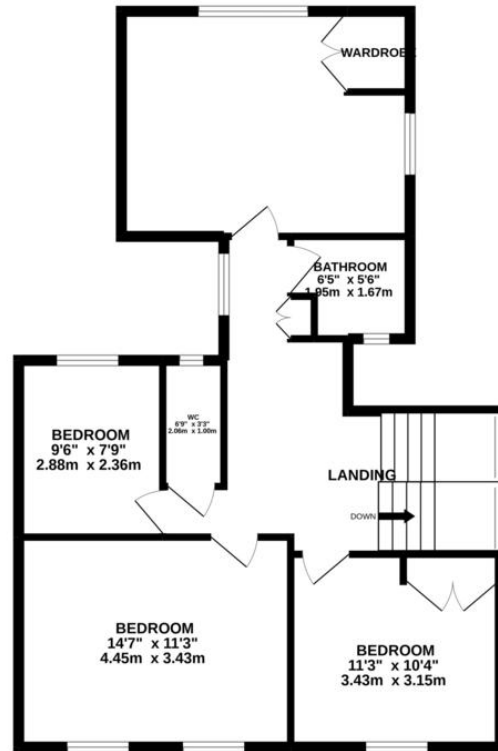
Energy Efficiency Rating		
	Current	Potential
<i>Very energy efficient - lower running costs</i>		
(92-100) A		
(81-91) B		
(69-80) C		75
(55-68) D	58	
(39-54) E		
(21-38) F		
(1-20) G		
<i>Not energy efficient - higher running costs</i>		
England, Scotland & Wales	EU Directive 2002/91/EC	



GROUND FLOOR
914 sq.ft. (84.9 sq.m.) approx.



1ST FLOOR
762 sq.ft. (70.7 sq.m.) approx.



TOTAL FLOOR AREA: 1676 sq.ft. (155.7 sq.m.) approx.

Whilst every attempt has been made to ensure the accuracy of the floorplan contained here, measurements of doors, windows, rooms and any other items are approximate and no responsibility is taken for any error, omission or mis-statement. This plan is for illustrative purposes only and should be used as such by any prospective purchaser. The services, systems and appliances shown have not been tested and no guarantee as to their operability or efficiency can be given.
Made with Metropix ©2022

Martin & Co Gloucester

13-15 Worcester Street • Gloucester • GL1 3AJ
T: 01452 528333 • E: gloucester@martinco.com

01452 528333

<http://www.martinco.com>



Accuracy: References to the Tenure of a Property are based on information supplied by the Seller. The Agent has not had sight of the title documents. A Buyer is advised to obtain verification from their Solicitor. Items shown in photographs including but not limited to carpets, fixtures and fittings are not included unless specifically mentioned within the sales particulars. They may however be available by separate negotiation. Buyers must check the availability of any property and make an appointment to view before embarking on any journey to see a property. No person in the employment of the agent has any authority to make any representation about the property, and accordingly any information given is entirely without responsibility on the part of the agents, sellers(s) or lessors(s). Any property particulars are not an offer or contract, nor for part of one. **Sonic / Laser Tape:** Measurements taken using a sonic / laser tape measure may be subject to a small margin of error. **All Measurements:** All Measurements are Approximate. **Services Not tested:** The Agent has not tested any apparatus, equipment, fixtures and fittings or services and so cannot verify that they are in working order or fit for the purpose. A Buyer is advised to obtain verification from their Solicitor or Surveyor.