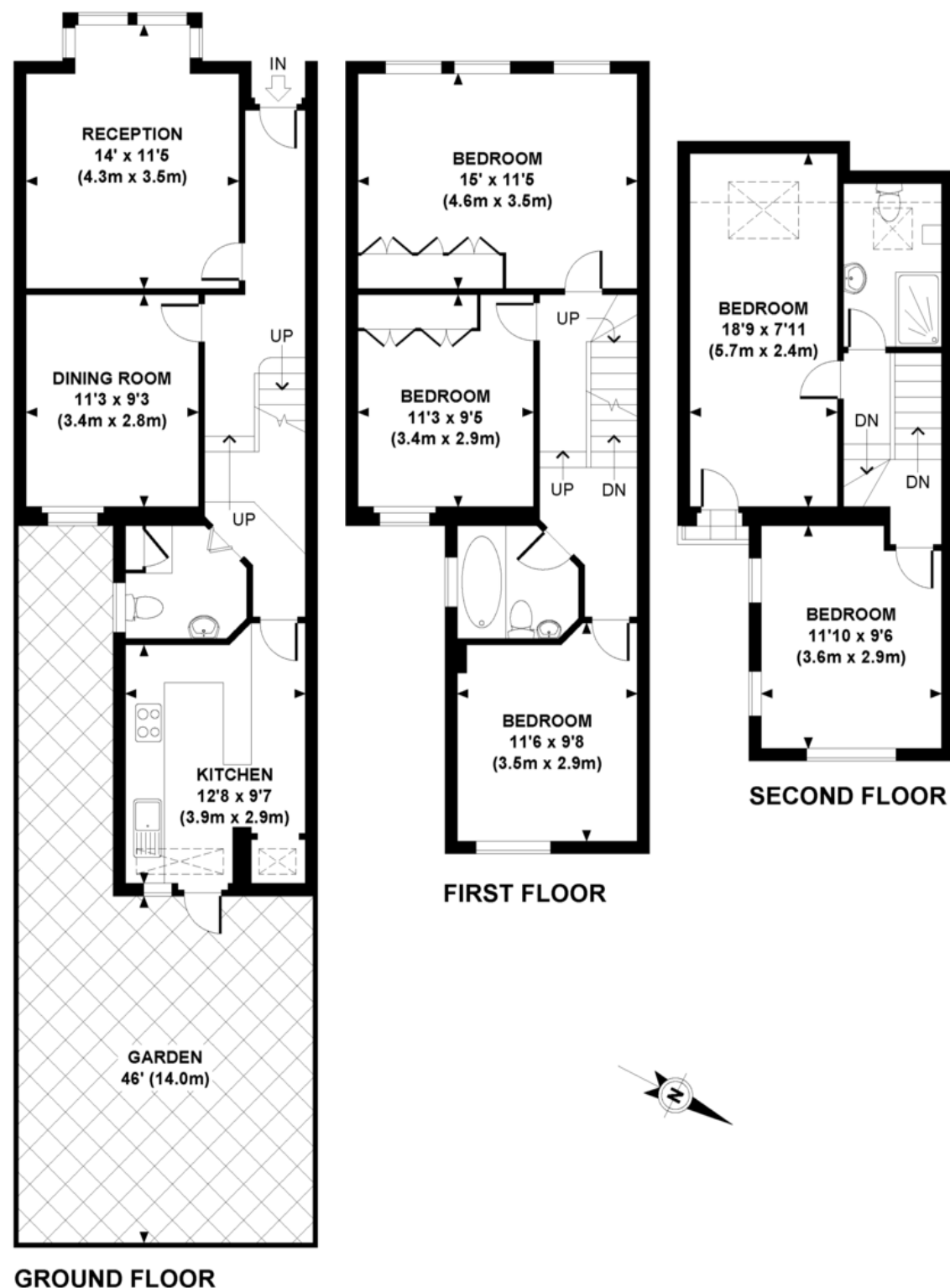


## Bolton Road, NW10



APPROXIMATE GROSS INTERNAL AREA 1437 SQ FT / 133.6 SQ M

Whilst every attempt has been made to ensure the accuracy of this floor plan; measurements of door, windows, rooms and all other items are approximate. No responsibility is taken for any error, omission or mis-statement. This floor plan is for illustrative purposes only, and should be treated as such.



## Bolton Road, London, NW10 4BG

£825,000 Freehold

### Key Features

- Bay Fronted Period Gem
- Two Bright Receptions
- Four Bedrooms
- Gardens
- Stunning Condition
- Ideal Growing Family
- Must Be Seen
- Prime Location

### Description

A fine four-bedroom period gem tucked away in a quiet side street but close to the bustling high road and offered for sale in exceptional condition throughout. Spread over three floors the accommodation is over 1400 sq ft and is ideal for the growing family.



