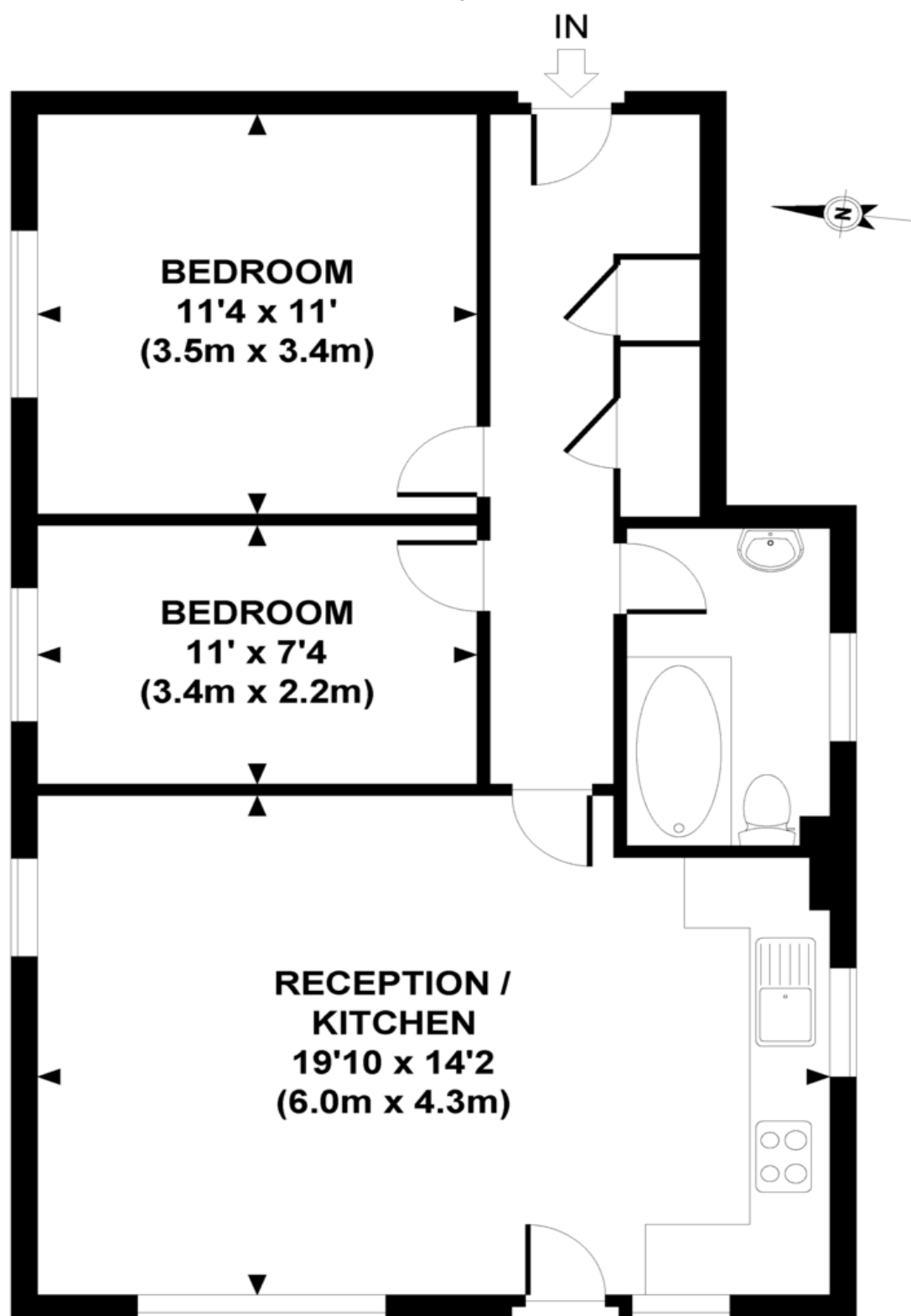


Teal Court, NW10



APPROXIMATE GROSS INTERNAL AREA 626 SQ FT / 58.2 SQ M

Whilst every attempt has been made to ensure the accuracy of this floor plan; measurements of door, windows, rooms and all other items are approximate. No responsibility is taken for any error, omission or mis-statement. This floor plan is for illustrative purposes only, and should be treated as such.



Teal Court, London, NW10 8PG

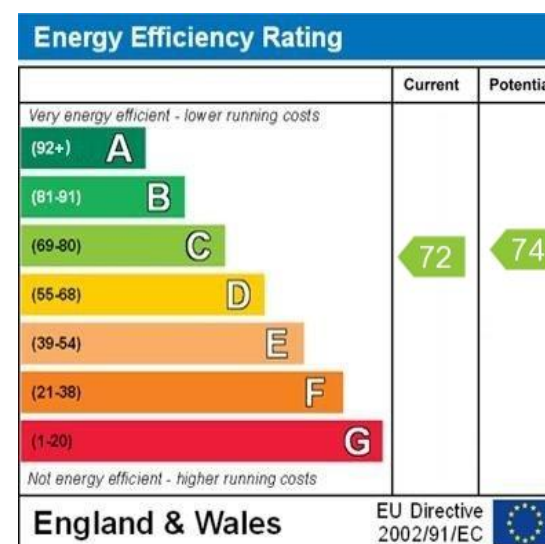
£359,950 Freehold

Key Features

- Two Bedroom Apartment
- Vacant
- Excellent Condition
- Fabulous Communal Gardens
- Long Lease
- No Chain
- Ideal Investment
- Cul De Sac Location

Description

Ideal for first time buyers or investors this fabulous two-bedroom ground floor apartment has direct access to delightful gardens and is situated quietly at the end of this highly sought after cul de sac. The property has been well maintained throughout and is offered with immediate vacant possession.



England & Wales

EU Directive
2002/91/EC



WWW.EPC4U.COM