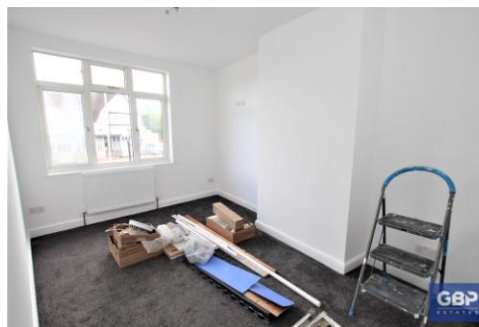




Roneo Corner, Hornchurch Rent **£1,200 pcm**



NEWLY REFURBISHED two-bedroom flat above shops located at Roneo Corner, Hornchurch. Located within proximity of local transport links and local amenities and within walking distance to Queens hospital.

This property has had a brand-new kitchen fitted with modern appliances including a fridge/freezer, washing machine and new oven, hob, and extractor fan. There is also a brand-new bathroom with grey tiled walls, a rainfall shower over the bath and a separate attachment.

There are brand new carpets throughout and a spacious loft space which can be used as a second bedroom with a built-in ladder and wooden flooring. No parking. Available now!

- **NEWLY REFURBISHED MAISONETTE ABOVE SHOPS**
- **BRAND NEW FITTED KITCHEN WITH MODERN APPLIANCES**
- **BRAND NEW MODER BATHROOM WITH SHOWER OVER THE BATH**
- **BRAND NEW CARPETS THROUGHOUT**
- **SPACIOUS LOFT AREA WHICH CAN BE USED AS A SECOND BEDROOM**
- **CLOSE TO LOCAL AMENITIES**
- **NO PARKING**

ACCOMMODATION

STAIRS/ LANDING

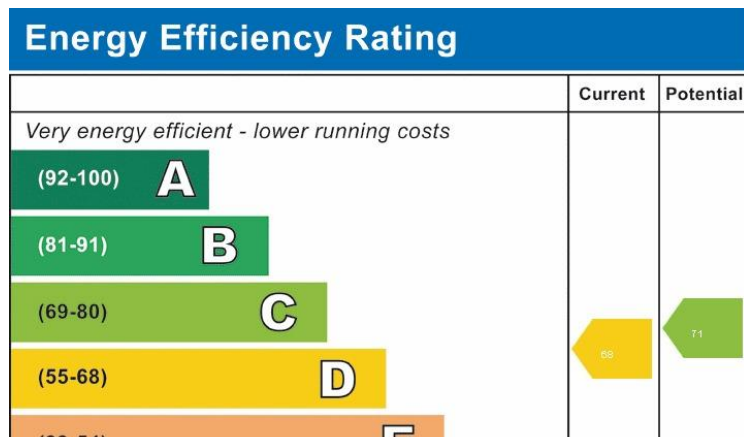
KITCHEN

BATHROOM

LOUNGE

BEDROOM ONE

LOFT AREA (BEDROOM TWO)



DISCLAIMER: These particulars, whilst believed to be accurate are set out as a general outline only for guidance and do not constitute any part of an offer or contract. Intending purchasers should not rely on them as statements or representation of fact, but must satisfy themselves by inspection or otherwise as to their accuracy. We have not carried out a detailed survey nor tested the services, appliances and specific fittings. Room sizes should not be relied upon for carpets and furnishings. The measurements given are approximate. No person in this firm's employment has the authority to make or give any representation or warranty in respect of the property.