

# Knightsbridge Crescent

Cheltenham GL53 7QW





## Knightsbridge Crescent Cheltenham GL53 7QW

A simply breath-taking four bedroom semi-detached bungalow finished to the highest order. The living accommodation consists of a stunning re-fitted kitchen/diner (new built in appliances) with island, and bi-folding doors to the rear garden. Adjacent to this is a lounge area which also has bi-folding doors. We also have a smart utility room and cloakroom. The bedrooms in the property consist of three double's and a single of which two of the bedrooms have newly fitted stylish en-suite shower rooms. The family bathroom is also very well presented with a modern suite and shower over the bath. Being a corner position the added extensions really haven't affected the flow of the house and still offers a superb landscaped garden and off road parking. A must see bungalow within walking distance of the town centre.

Council Tax Band: C









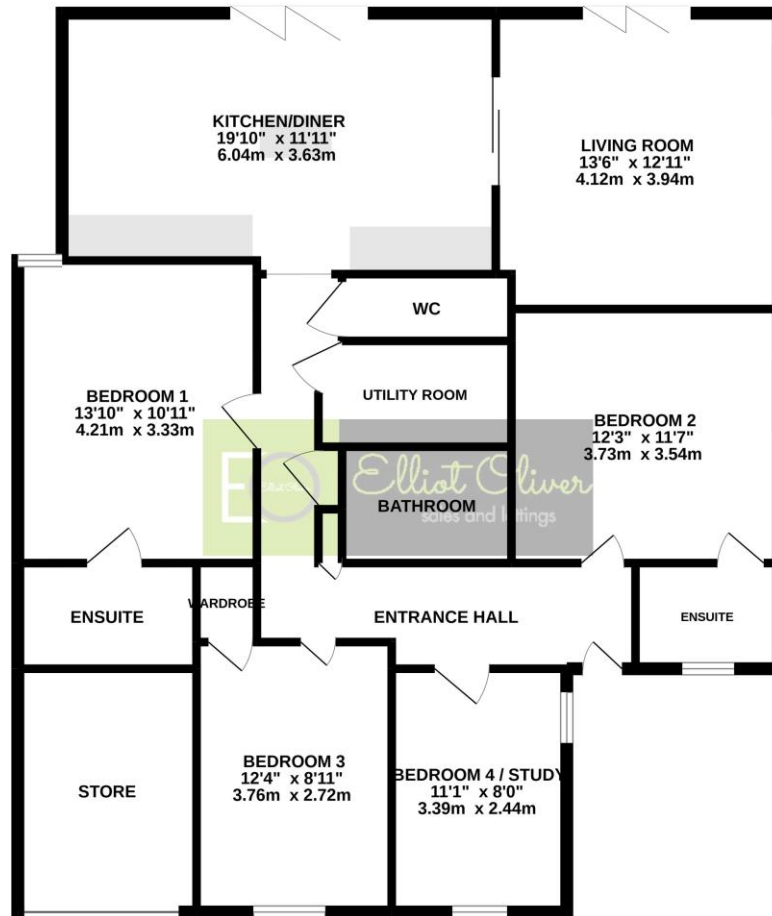








GROUND FLOOR  
1297 sq.ft. (120.5 sq.m.) approx.



TOTAL FLOOR AREA : 1297 sq.ft. (120.5 sq.m.) approx.

Whilst every attempt has been made to ensure the accuracy of the floorplan contained here, measurements of doors, windows, rooms and any other items are approximate and no responsibility is taken for any error, omission or mis-statement. This plan is for illustrative purposes only and should be used as such by any prospective purchaser. The services, systems and appliances shown have not been tested and no guarantee as to their operability or efficiency can be given.  
Made with Metroplan ©2022

### Energy Efficiency Rating

	Current	Potential
Very energy efficient - lower running costs		
(92-100) <b>A</b>		
(81-91) <b>B</b>		
(69-80) <b>C</b>		80
(55-68) <b>D</b>	81	
(39-54) <b>E</b>		
(21-38) <b>F</b>		
(1-20) <b>G</b>		
Not energy efficient - higher running costs		
England, Scotland & Wales		EU Directive 2002/91/EC



### OFFICE

101 Promenade,  
Cheltenham,  
Gloucestershire, GL50  
1NW  
info@elliottoliver.co.uk

**Agents Note:** Whilst every care has been taken to prepare these sales particulars, they are for guidance purposes only. All measurements are approximate and are for general guidance purposes only and whilst every care has been taken to ensure their accuracy, they should not be relied upon and potential buyers are advised to recheck the measurements