

3 bedroom Victorian semi-detached house located close to both Redhill and Reigate.

Delightful Victorian home with 3 bedrooms, ground floor bathroom, sitting room, kitchen/dining room and a courtyard garden.

The entrance hall leads to the sitting room which has a lovely bay window and fireplace. To the rear the kitchen/dining room has white high gloss units and 5 burner gas hob. At the back of the house on the ground floor the bathroom has a white suite, double aspect windows and another fireplace.

On the first floor bedroom 1 has 2 sash windows and fitted wardrobes. Bedroom 2 is another double bedroom and gives access to bedroom 3.



CHAIN FREE

GUIDE PRICE

£520,000



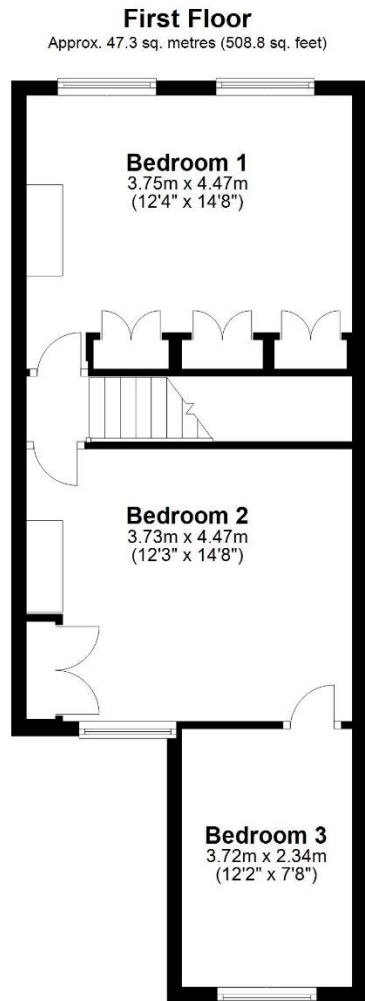
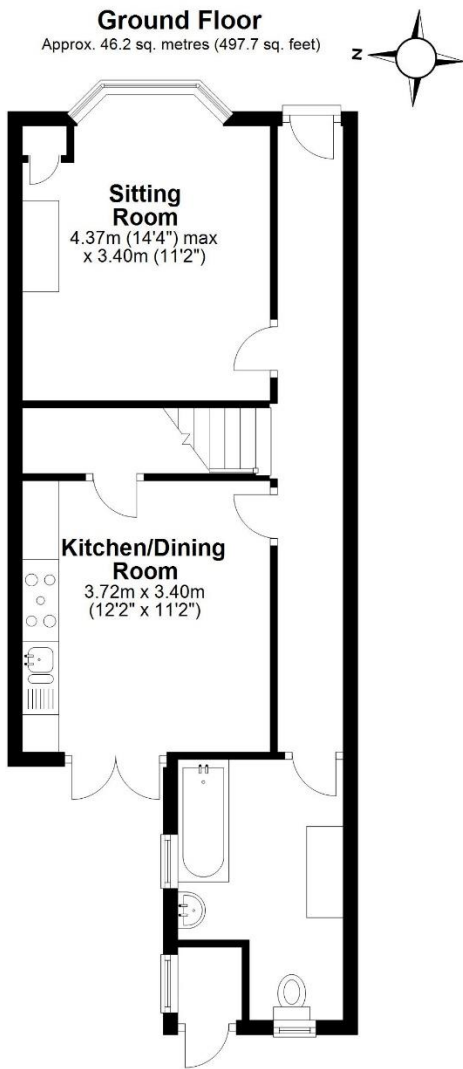
15 Ranelagh Road, Redhill, Surrey, RH1 6BJ

- 3 bedrooms.
- Sitting room with bay window.
- Kitchen/dining room.
- Ground floor bathroom.
- Courtyard garden.
- Fitted wardrobes.

- Walking distance to both Reigate and Redhill.
- Victorian features throughout.
- CHAIN FREE



PRS Property Redress Scheme



Total area: approx. 93.5 sq. metres (1006.6 sq. feet)

Produced by Lewis White, not to scale and indicative only
Plan produced using PlanUp.

Council tax band: D

EPC Rating: E

