

Summary

**** PART BUY PART RENT **** A brand new 4 bedroom detached home with ensuite to master bedroom, ground floor cloakroom, kitchen/diner with french doors onto the garden, garage and off road parking.

Description

£200,000 is for a 50% share purchase, the full property price is of £400,000.

Based on 50% share, will be rent payable on the remainder 50% of £815 pcm

The minimum cash deposit you will need is £80,000. You simply need 20% cash deposit on the full purchase price, there's no need for a mortgage and you can buy more or move at any time.

Subject to status and certain criteria (please see below for more details), you can buy from 25% -75% and pay rent on the part you do not buy whilst being able to staircase over time to own 100% of the property.

Your Home is a part buy 'part rent scheme available on freehold properties for sale with Bychoice Estate Agents.

*Your Home eligibility criteria:

- Good credit history
- Income to support the unpurchased share.
- Be a British or EU citizen or have indefinite rights to remain in the UK
- Must be your principle and only home at completion

For more information on `Your Home' and to apply, please contact Bychoice on how to purchase this property.

Entrance Hall The property is entered via a part glazed front door in to the entrance hallway with stairs to the first floor, radiator and doors to the kitchen, lounge and cloakroom.

SITTING ROOM 18' 3" x 14' 0" (5.56m x 4.27m) Two windows to front aspect and french doors and windows to the side, built in cupboard, TV and telephone points, two radiators.

KITCHEN/DINER 18' 2" x 9' 8" (5.54m x 2.95m) Two windows to front and side aspect, fitted with a range of wall and base units with worktops over and inset sink unit with mixer tap, electric oven and five ring gas hob with extractor over, integrated fridge freezer and spaces for two more appliances, spotlights and radiator.

Cloakroom Frosted window to rear, low level W.C, pedestal wash hand basin, part tiled walls and radiator.

First Floor Landing Window to rear, access to loft, built in cupboard, radiator and doors to bedrooms and bathroom.

BEDROOM 1 12' 9" x 12' 3" (3.89m x 3.73m) Two windows to front, built in wardrobes, TV point, radiator and door to ensuite.

Ensuite Frosted window to side, fitted with a shower cubicle, low level W.C, pedestal wash hand basin, extractor fan and shaver socket.

BEDROOM 2 11' 2" x 9' 9" (3.4m x 2.97m) Two windows to front and window to side, radiator.

BEDROOM 3 11' 2" x 8' 0" (3.4m x 2.44m) Window to side, radiator.

BEDROOM 4 7' 8" x 7' 4" (2.34m x 2.24m) Window to front, radiator

Family Bathroom Frosted window to rear aspect, fitted with a panelled bath, low level W.C, pedestal wash hand basin with mixer tap, extractor fan and part tiled walls.

Outside Rear garden, fence enclosed with access gate.

Garage Single garage with up and over door.

Additional Information

Local Authority – Mid Suffolk District Council

Tenure – Freehold

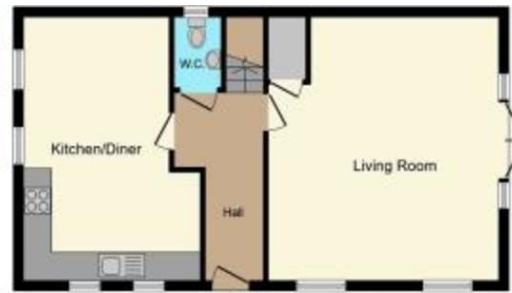
Post Code – IP31 3FL

Viewings by appointment

Bychoice Estate Agents

Tel: 01284 769598





Ground Floor



First Floor



If you would like to speak to one of our mortgage advisors call now – 01284 769598

Your home may be repossessed if you do not keep up repayments on your mortgage.

%epcGraph_c_1_317%



Contact Details

6 The Traverse, Bury St Edmunds, IP33 1BJ

Tel: 01284 769598

Email: burystedmunds@bychoice.co.uk

Agents Note: Whilst every care has been taken to prepare these sales particulars, they are for guidance purposes only. All measurements are approximate and are for general guidance purposes only and whilst every care has been taken to ensure their accuracy, they should not be relied upon and potential buyers are advised to recheck the measurements

Kings Road | Thurston | IP31 3FL

** PART BUY PART RENT ** A brand new 4 bedroom detached home with ensuite to master bedroom, ground floor cloakroom, kitchen/diner with french doors onto the garden, garage and off road parking.

£200,000

- New Build
- 4 Bedrooms
- Ensuite
- Garage
- Village Location
- Chain Free