

# THOMAS BROWN

ESTATES



**77 Arundel Drive, Orpington, BR6 9JQ**

**Asking Price: £560,000**

- 3 Bedroom, 2 Reception Room Semi-Detached House
- Short Walk to Chelsfield Station & The Highway Primary School
- Extended to Rear
- No Forward Chain







## Property Description

Thomas Brown Estates are delighted to offer this rear extended, three bedroom semi-detached property being offered to the market with no forward chain and boasting a short walk to Chelsfield Station and The Highway Primary School. The accommodation on offer comprises; entrance hall, extended lounge with direct access to the rear garden, fitted kitchen/breakfast room and a dining room to the ground floor. To the first floor there is a landing giving access to three bedrooms (including two good size doubles) and family bathroom with separate bath and shower. Externally there is a large 90' rear garden and off street parking to the front. Arundel Drive is well located for local schools including The Highway, shops, bus routes and Chelsfield Station. Internal viewing is highly recommended. Please call Thomas Brown Estate Agents in Orpington to arrange a viewing.





#### ENTRANCE HALL

Covered entrance, double glazed opaque door to front, carpet, radiator.

#### LOUNGE

24' 3" x 13' 4" (7.39m x 4.06m) Gas fireplace, double glazed windows and double glazed French doors to rear, carpet, two radiators.

#### DINING ROOM

11' 1" x 8' 4" (3.38m x 2.54m) Double glazed window to rear, carpet, radiator.

#### KITCHEN/BREAKFAST ROOM

18' 6" x 11' 2" (5.64m x 3.4m) Range of matching wall and base units with worktops over, stainless steel sink and drainer, space for cooker, integrated gas hob with extractor over, space for fridge/freezer, space for washing machine, space for table and chairs, double glazed window to front, double glazed opaque door to side, tiled flooring, radiator.



#### STAIRS TO FIRST FLOOR LANDING

Double glazed window to front, carpet, radiator.

#### BEDROOM 1

13' 4" x 10' 5" (4.06m x 3.18m) Double glazed window to rear, carpet, radiator.

#### BEDROOM 2

12' 2" x 9' 10" (3.71m x 3.0m) Airing cupboard, double glazed window to rear, carpet, radiator.



#### BEDROOM 3

8' 11" x 7' 11" (2.72m x 2.41m) Double glazed window to front, radiator.

#### BATHROOM

Low level WC, wash hand basin, bath, shower cubicle, double glazed opaque window to side, tiled walls, carpet, radiator.

#### OTHER BENEFITS INCLUDE:

#### REAR GARDEN

90' 0" (27.43m) (approx.) Numerous seating areas, mature shrubs and hedges, brick built shed, side access.



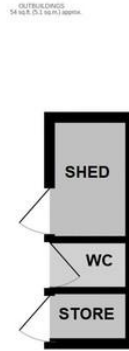
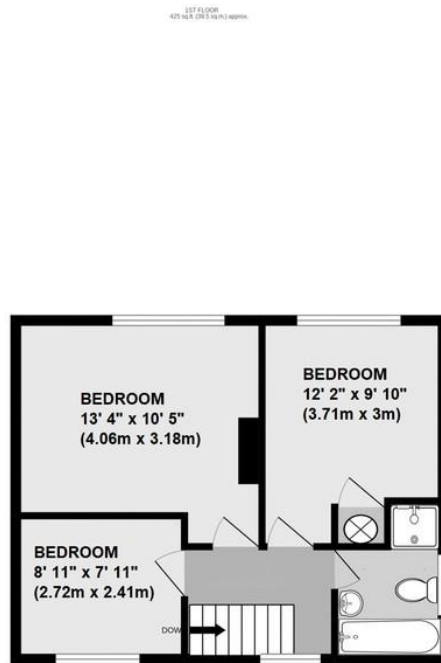
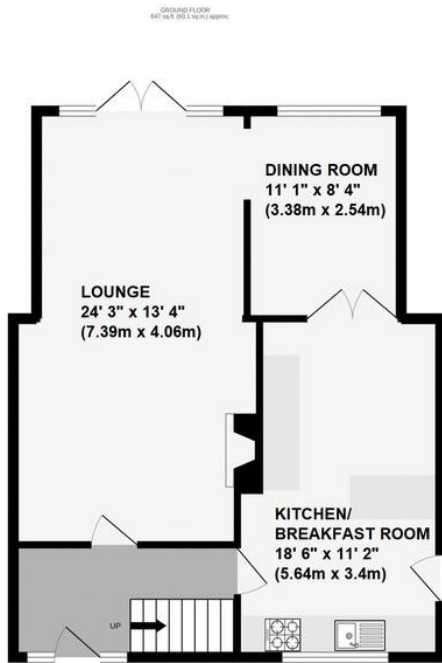
#### FRONT GARDEN/OFF STREET PARKING

Drive, block paved path, mature shrubs.

#### DOUBLE GLAZING

#### CENTRAL HEATING SYSTEM

#### NO FORWARD CHAIN

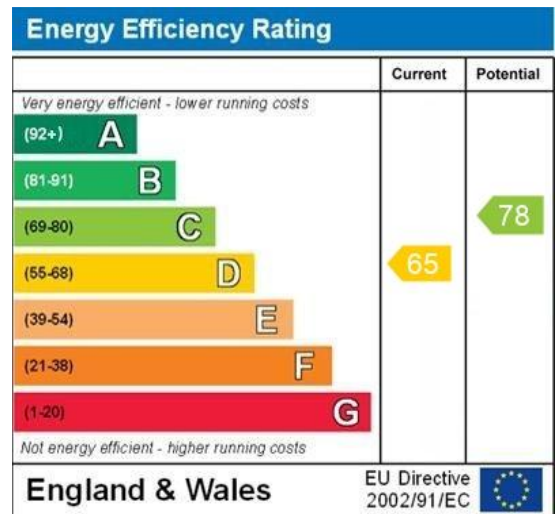


TOTAL FLOOR AREA : 1126 sq. ft. (104.6 sq. m.) approx.

Whilst every attempt has been made to ensure the accuracy of the floorplan contained here, measurements of doors, windows, rooms and any other items are approximate and no responsibility is taken for any error, omission or mis-statement. This plan is for illustrative purposes only and should be used as such by any prospective purchaser. The services, systems and appliances shown have not been tested and no guarantee as to their operability or efficiency can be given.  
Made with Metropix ©2022



**Construction: Standard**  
**Council Tax Band: D**  
**Tenure: Freehold**



No statement in these details is to be relied upon as representation of fact, and purchasers should satisfy themselves by inspection or otherwise as to the accuracy of the statements contained within. These details do not constitute any part of any offer or contract. Thomas Brown Estates and their employees and agents do not have any authority to give warranty or representation whatsoever in respect of this property. These details and all statements herein are provided without any responsibility on the part of Thomas Brown Estates or the vendors.

Thomas Brown Estates have not tested the equipment or central heating system mentioned in these particulars and the purchasers are advised to satisfy themselves as to the working order and condition.

Measurements: Great care is taken when measuring, but measurements should not be relied upon for ordering carpets, equipment, etc.

The Laws of copyright protect this material. The Owner of the copyright is Thomas Brown Estates. This property sheet forms part of our database, and is protected by the database right and copyright laws. No unauthorised copying or distribution without permission.

Registered Office: Lawrence & Co, 94 Brook Street, Erith, DA8 1JF. Registered in England no. 6048974

285 High Street  
Orpington  
Kent  
BR6 0NN

www.thomasbrownestates.co.uk  
sales@thomasbrownestates.co.uk  
**01689 884444**

Telephones Manned:  
Mon-Fri: 8am – 8pm  
Sat: 8am – 5pm  
Sun: 10am – 4pm

**THOMAS BROWN**  
ESTATES