



2 Bedroom Apartment *Offers in excess of* £150,000

Flat 11 Chopin Mews, 1-19 Mazurek Way, Swindon, Wiltshire, SN25 1TS

mcfarlane
property.com

2 Bedroom Apartment North Swindon

- IDEAL FIRST TIME BUYER
- RECENTLY MODERNISED
- SPACIOUS APARTMENT
- TWO DOUBLE BEDROOMS

- FIRST FLOOR APARTMENT - TWO DOUBLE BEDROOMS - ENSUITE - ALLOCATED PARKING - NO ONWARD CHAIN -

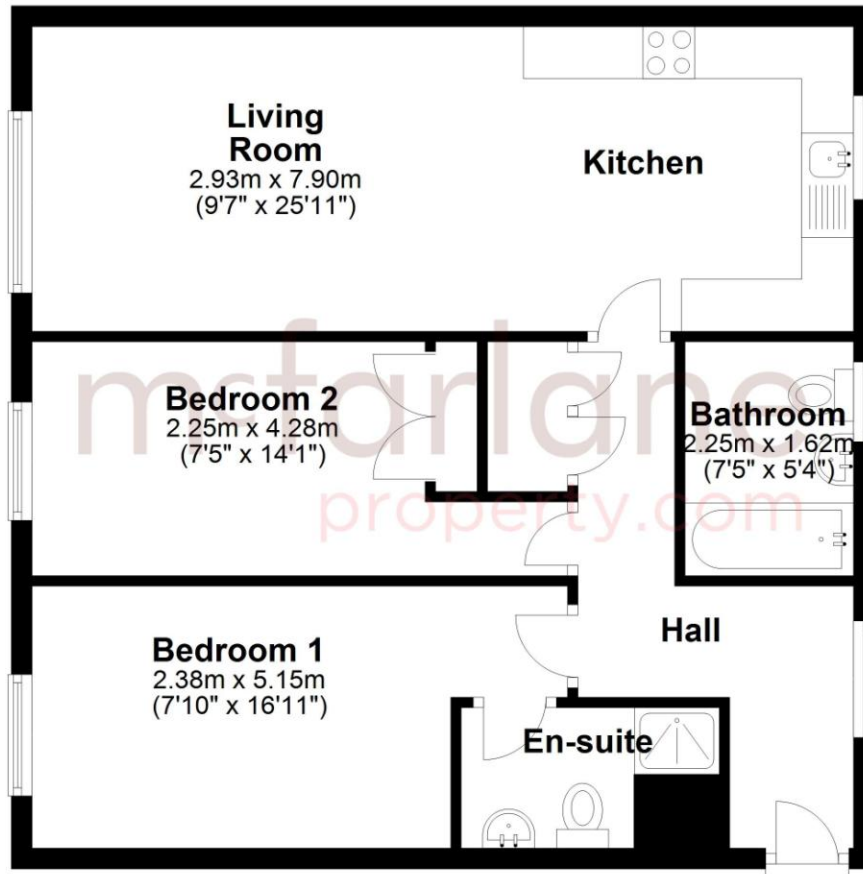
Located in a sought after backwater development of Haydon End, North Swindon is this two double bedroom First Floor Apartment with allocated parking. Haydon End is within walking distance of North Swindon District Centre which houses the library and Asda Walmart retail park with a wide range of outlets within easy reach. Good Primary and Secondary schools are also close by. Recently refurbished throughout, the apartment offers modern and spacious accommodation which comprises of: security intercom entrance, Entrance Hall, open plan Living Room / Kitchen, two Double Bedrooms, one with Ensuite Shower Room and a Family Bathroom. Further benefits include UPVC double glazing and allocated parking.





Ground Floor

Approx. 59.9 sq. metres (645.1 sq. feet)



Total area: approx. 59.9 sq. metres (645.1 sq. feet)

We 
where you
LIVE

Our team are friendly, experienced and all from here. They know it better than they do their own living rooms and can help you find what you're looking for because **we love where we live.**

We would be delighted to show you around this property.

**Because every home
needs a personal touch.**

**If you would like to view this
property then please get in touch.**

 01793 611841

 swindon@mcfarlaneproperty.com

mcfarlaneproperty.com

mcfarlane
property.com

Swindon.

The Village Centre
Redhouse SN25 2FW

 01793 296600

Old Town.

28-30 Wood Street
Swindon SN1 4AB

 01793 611841

Cricklade.

102 High Street
Cricklade SN6 6AA

 01793 751044

Marlborough.

106 High Street
Marlborough SN8 1LT

 01672 514380

Agents Note: Whilst every care has been taken to prepare these sales particulars, they are for guidance purposes only. All measurements are approximate and are for general guidance purposes only and whilst every care has been taken to ensure their accuracy, they should not be relied upon and potential buyers are advised to recheck the measurements