

Brewer Street, Soho, W1F
£650 pw

> 1 Bedroom > 1 Bathroom > Unfurnished

TAVISTOCKBOW
RESIDENTIAL



- > One bedroom
- > One shower room
- > Private terrace
- > Recently refurbished
- > Third floor
- > Unfurnished
- > Wood floors
- > Approx 510 sq ft
- > Available early January
- > Close to Piccadilly tube station

A fantastic, brand new, one bedroom apartment to rent with a great roof terrace on the top floor (third) of a newly refurbished building. The apartment has beautiful herringbone wood floors throughout, a contemporary shower room and a good size bedroom. Available early January, unfurnished, 3 year contract with a 6 months mutual break clause.

Council tax band E.





WHAT WE LOVE:

- The private terrace
- The herringbone wood floors
- The luxurious shower room
- The location (Whole Foods is minutes away)
- Top floor.

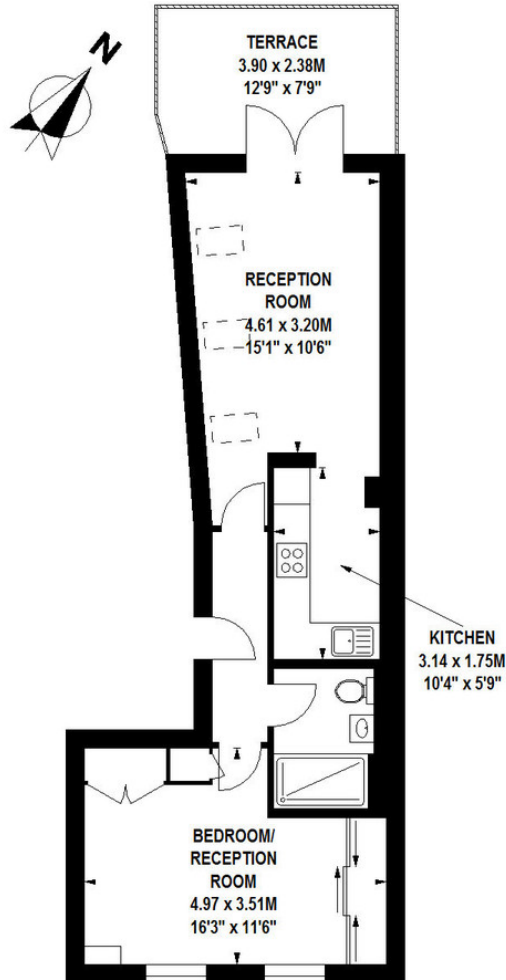
WHAT YOU NEED TO KNOW:

- Third floor (walk up)
- Triple glazed
- Gas central heating
- Induction hob
- Good storage.



Brewer Street, W1F

Approximate gross internal area
44.5 sq m / 479 sq ft



Third Floor




Floor Plan produced for Tavistock Bow by Mays Floorplans © . Tel 020 3397 4594
Illustration for identification purposes only, not to scale
All measurements are maximum, and include wardrobes and window bays where applicable

Energy Efficiency Rating		
	Current	Potential
Very energy efficient - lower running costs		
(92-100) A		
(81-91) B		
(69-80) C	78	78
(55-68) D		
(39-54) E		

About Us

Tavistock Bow is an independent residential agency based in Covent Garden. We are niche, boutique, creative, knowledgeable, professional and approachable. We love what we do and that's why we do it.

Contact Us

- a.** 21 New Row, Covent Garden, WC2N 4LE  /tavistockbow
- t.** 020 7477 2177  /tavistockbow
- e.** hello@tavistockbow.com  @tavistockbow
- w.** tavistockbow.com

