



# DYBLES

**Wolfe Close, Winchester**  
£190,000

**ADDRESS**

4 Black Swan Buildings, Southgate Street

**EMAIL**

[winchester@dybles.com](mailto:winchester@dybles.com)

**PHONE**

01962 866644

**WEB**

[www.dybles.com](http://www.dybles.com)



#### PROPERTY SUMMARY



Maisonette



1 bedroom



1 bathroom





#### PROPERTY FEATURES

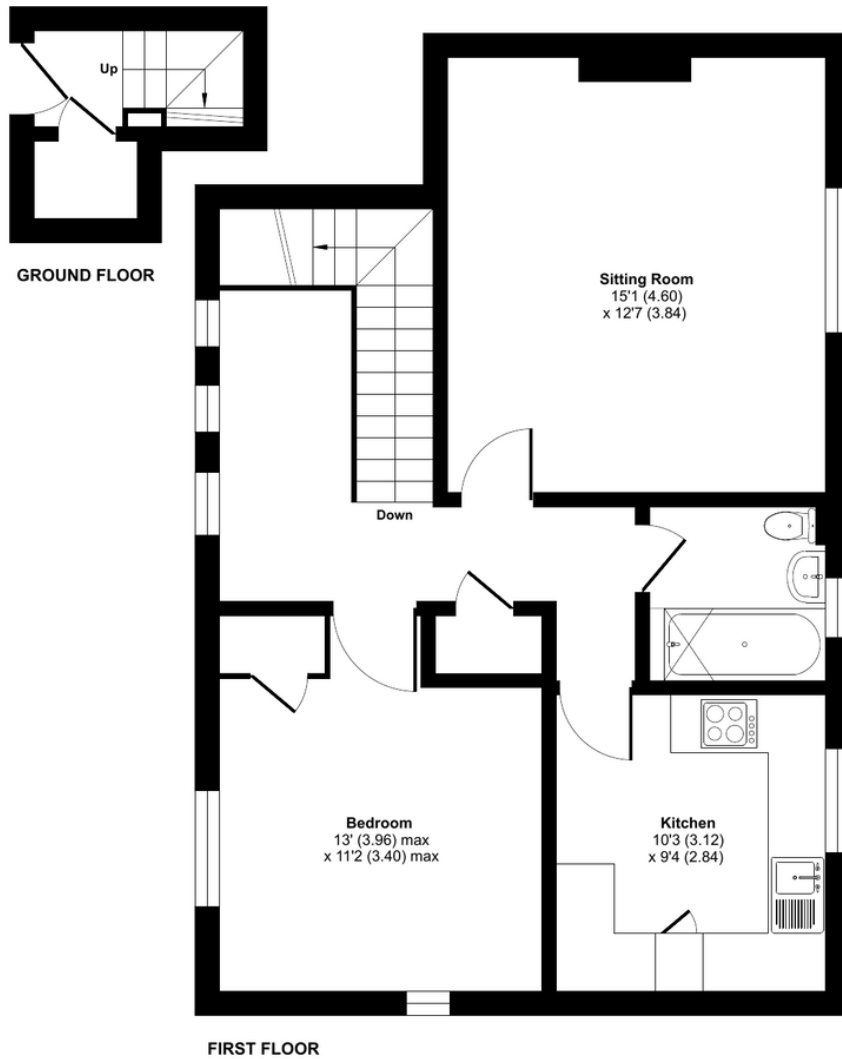
- One Bedroom
- No Forward Chain
- Apartment
- Early Viewing Advised
- Stanmore Location
- Rear Strip Of Garden



# Wolfe Close, Winchester, SO22

Approximate Area = 673 sq ft / 62.5 sq m

For identification only - Not to scale



Floor plan produced in accordance with RICS Property Measurement Standards incorporating International Property Measurement Standards (IPMS2 Residential). © nichecom 2021. Produced for Dybles. REF: 864116

Energy Efficiency Rating		Current	Potential
<i>Very energy efficient - lower running costs</i>			
(92-100)	<b>A</b>		
(81-91)	<b>B</b>		
(69-80)	<b>C</b>		75
(55-68)	<b>D</b>	68	
(39-54)	<b>E</b>		
(21-38)	<b>F</b>		
(1-20)	<b>G</b>		
<i>Not energy efficient - higher running costs</i>			
<b>England, Scotland &amp; Wales</b>		EU Directive 2002/91/EC	

# DYBLES

Disclaimer Property Details: These particulars, whilst believed to be accurate are set out as a general outline only for guidance and do not constitute any part of an offer or contract. Intending purchasers should not rely on them as statements or representation of fact but must satisfy themselves by inspection or otherwise as to their accuracy. We have not carried out a detailed survey nor tested the services, appliances and specific fittings. Room sizes should not be relied upon for carpets and furnishings. The measurements given are approximate. No person in this firms' employment has the authority to make or give any representation or warranty in respect of the property.

[www.dybles.com](http://www.dybles.com)