

20 Austin Court



20 Austin Court

One bedroom apartment

A fabulous one bedroom penthouse featuring high sloping ceilings. The apartment has an open plan kitchen/dining room with a large walk-in cupboard and space for a dining table. The living room has an east-facing Juliette balcony with stunning views towards the Malvern hills.

Property specifications

- Unique apartment with sloping ceilings located in the eaves of the building
- Open plan kitchen and living/dining room with Juliette balcony
- Main bedroom with fitted wardrobes and additional Juliette balcony
- Fully fitted SieMatic kitchen with Corian worktops
- Shower room
- Lift access

Guide Price £330,000 (other fees apply)

Monthly management fee: £955.56 or £528.65 when deferred

Viewing by appointment with the sales office.

01684 438400
ellersliesales@audleyvillages.co.uk



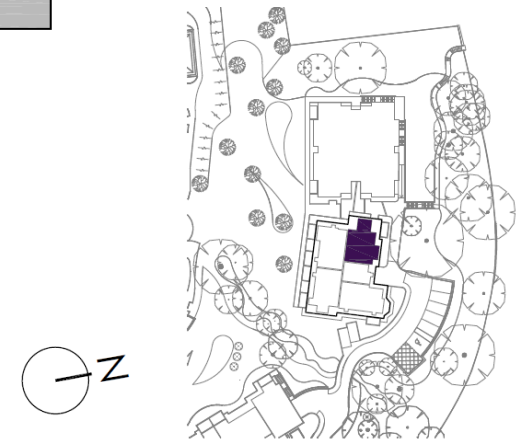
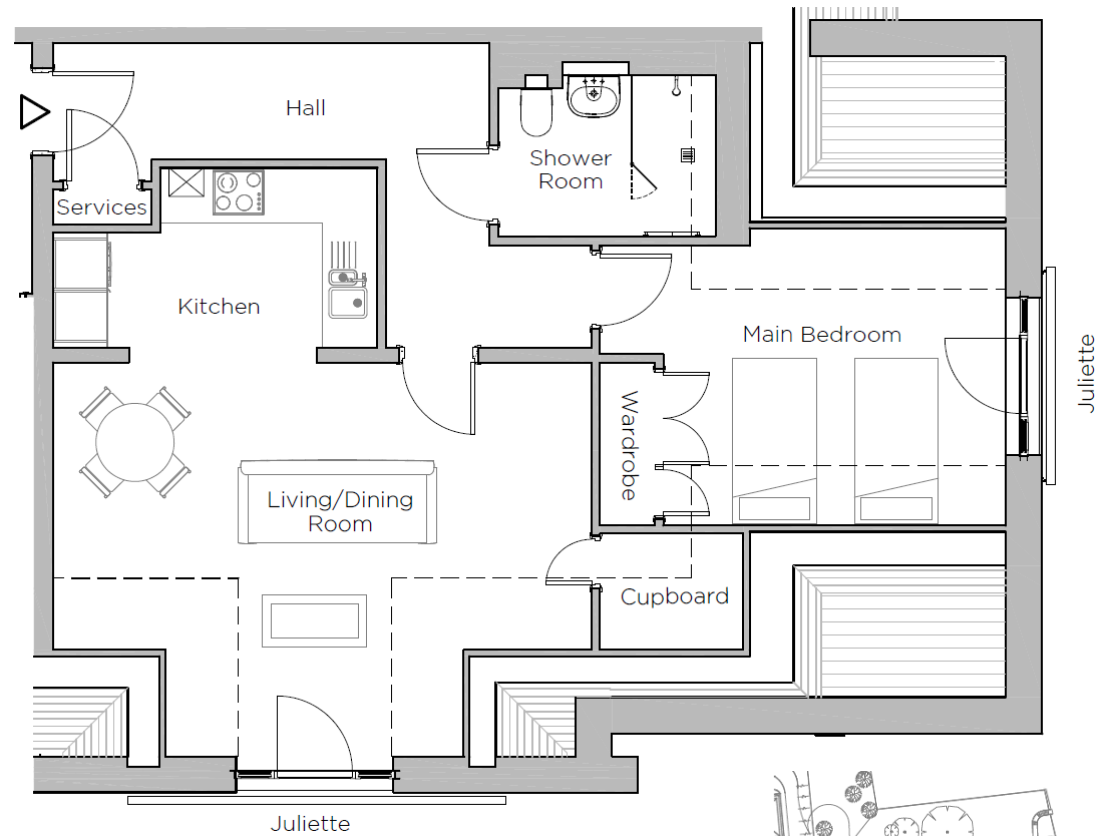
20 Austin Court

Internal Measurements

	Metric (m)	Imperial (ft)
Living/Dining Room	6.19 x 4.52	20'4" x 14'10"
Kitchen	3.73 x 2.07	12'3" x 6'9"
Main Bedroom	3.93 x 3.39	12'11" x 11'2"
Total Sq.Ft:	737	

Built in wardrobes in bedrooms have not been included in the overall dimensions. Maximum measurements shown.

Score	Energy rating	Current	Potential
92+	A		
81-91	B	83 B	83 B
69-80	C		
55-68	D		
39-54	E		
21-38	F		
1-20	G		



These pages are intended for marketing purposes only. Designs vary according to plot and all details should be checked at the Sales office. June 2022

