



LUXURY ONE BEDROOM APARTMENT IN THE HEART OF RICKMANSWORTH

High Street, Rickmansworth, Hertfordshire, WD3 1EQ



LUXURY ONE BEDROOM APARTMENT IN THE HEART OF RICKMANSWORTH

High Street, Rickmansworth, Herts, WD3 1EQ

- **DOUBLE BEDROOM**
- **OPEN PLAN LIVING/DINING ROOM**
- **MODERN KITCHEN**
- **CONTEMPORARY SHOWER ROOM**
- **THIRD FLOOR**
- **LIFT TO ALL FLOORS**
- **VIDEO ENTRYPHONE SYSTEM**
- **RESIDENTS PARKING**
- **CENTRAL RICKMANSWORTH LOCATION**

Description

This immaculately presented luxury apartment is situated in the centre of Rickmansworth within easy reach of shops, restaurants and Rickmansworth station.

There is a video entry system at the front of the property, providing access to the communal entrance hall, where there are both stairs and a lift to all floors.

This bright property has a modern kitchen with integrated appliances, which is open plan with the living/dining area with its large windows allowing light to flood in.





There is a spacious double bedroom with a fitted wardrobe and also a contemporary shower room with a vanity unit.

The apartment is complemented by an airing cupboard off the entrance hall.

The property has the added benefit of a secure cycle store.

Location

Rickmansworth town centre has a wide range of boutique shops, coffee houses, restaurants and major supermarkets. The Metropolitan and Chiltern line train services connect you to London Baker Street, Marylebone Station and beyond. The M25 motorway is available at both junction 17 and 18, connecting you to the national motorway network. Major London airports are also within reach. The area is well served for good quality private and state schools for all ages. Chorleywood and Rickmansworth offer everything for the sporting individual from rugby, cricket, football, tennis, horse riding and golf. Rickmansworth Aquadrome is an ideal setting for walks, sailing, fishing and water skiing.

Additional Information

Tenure: Leasehold

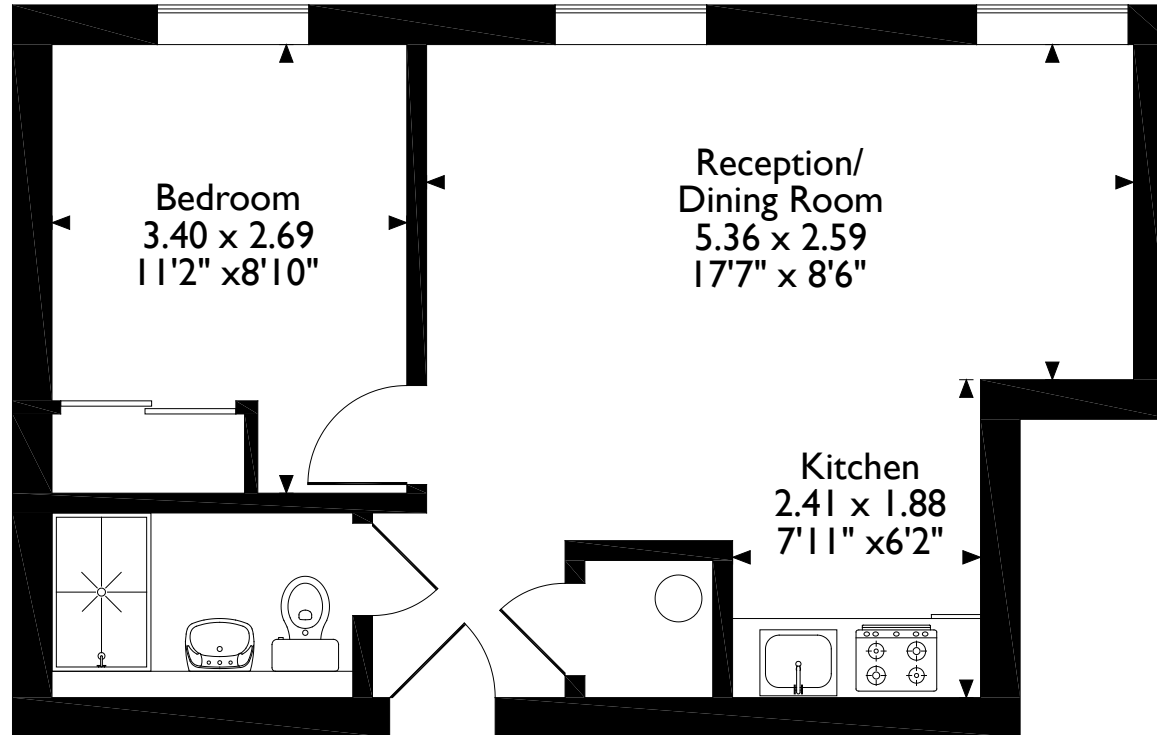
Local Authority: Three Rivers District Council

Energy Efficiency Rating: Band D



Langwood House 63-81 High Street, Rickmansworth

Approximate Gross Internal Area
38 Sq M/409 Sq Ft



Third Floor

Please note that the location of doors, windows and other items are approximate and this floorplan is to be used for illustrative purposes only. Unauthorized reproduction is prohibited.

ROBSONS

130 High Street, Rickmansworth, Hertfordshire, WD3 1AB
Tel: 01923 777762 Email: rickmansworth@robsonswb.com

www.robsonswb.com

www.
the
londonoffice.co.uk
40 ST JAMES'S PLACE SW1