

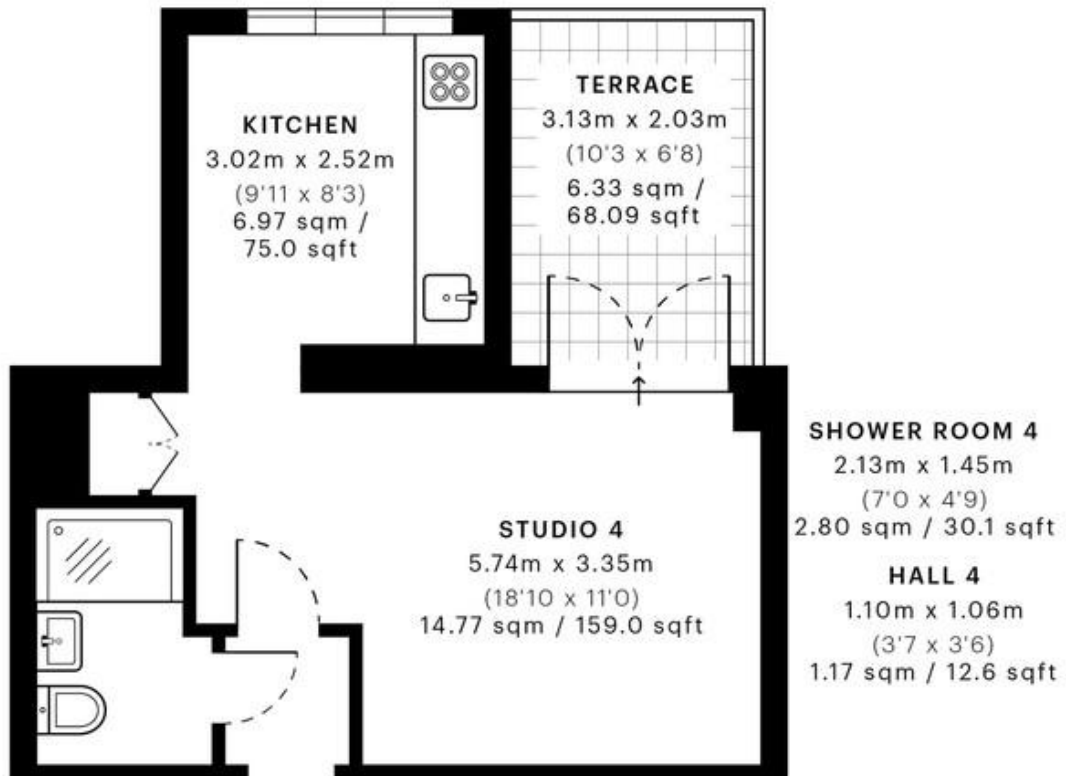


## Montpelier Rise, London

£1,350 pcm

Mile are pleased to present this brand newly refurbished super bedsit to rent in Golders Green. Consists of a double bed, built in wardrobes and fully fitted kitchen including a washer/dryer. Located a 5 minute walk to Brent Cross Station (Northern Line) and close to Golders Green High Street. All Bills Included in the rent (including Council tax and Internet). Available 11th July! EPC Rating E

- Brand Newly Refurbished
- Furnished
- Fully Fitted Kitchen
- Washer/Dryer Included
- All Bills Included
- 5 Min Walk to Brent Cross Station
- EPC Rating E
- Available 11th July



— First Floor

**GROSS INTERNAL AREA (GIA)**  
The footprint of the property  
26.85 sqm / 289.01 sqft

**NET INTERNAL AREA (NIA)**  
Excludes walls and external features  
Includes washrooms, restricted head height  
25.71 sqm / 276.74 sqft

**EXTERNAL STRUCTURAL FEATURES**  
Balconies, terraces, verandas etc.  
6.33 sqm / 68.14 sqft

**RESTRICTED HEAD HEIGHT**  
Limited use area under 1.5 m  
0.00 sqm / 0.00 sqft