



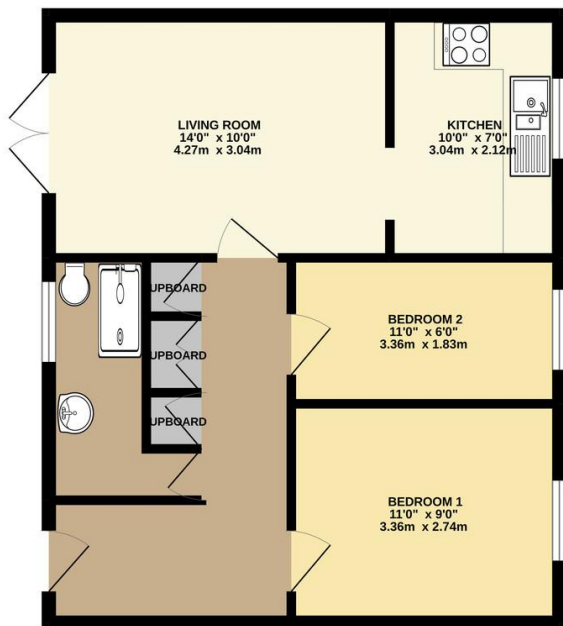


# Property Summary

This two bedroom over 60s first floor retirement flat is offered with no upward chain and in good decorative condition. Situated with an intimate purpose built development and conveniently located for a range of local shops and amenities. The accommodation is not directly connected with any other apartment with the exception of the one below and comprises an entrance hall with ample storage cupboards, lounge with Juliette balcony, fitted kitchen, two bedrooms and a bathroom. The flats were built in 1988 with a 999 year lease. To the outside there is unallocated parking and communal gardens.



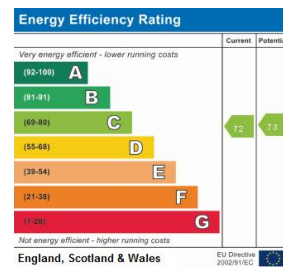
GROUND FLOOR  
524 sq.ft. (48.7 sq.m.) approx.



FLOORPLAN BY PHILLIPS GEORGE

TOTAL FLOOR AREA: 524 sq.ft. (48.7 sq.m.) approx.

Whilst every attempt has been made to ensure the accuracy of the floorplan contained here, measurements of doors, windows, rooms and any other items are approximate and no responsibility is taken for any error, omission or misstatement. This plan is for illustrative purposes only and should be used as such by any prospective purchaser. The owners, systems and appliances shown have not been tested and no guarantee as to their operability or efficiency can be given.  
Made with Metronix 03/22



Address:  
Kingswood Court  
Reference:  
P/01

- Two Bedroom First Floor Retirement Flat (Over 60s)
- Good Decorative Condition
- Purpose Built Intimate Development
- Lounge with Juliette Balcony
- Unallocated Parking
- No Upward Chain
- Close to Local Shops and Amenities
- Communal Gardens

phillips george | sales & lettings

Agents Note: Whilst every care has been taken to prepare these sales particulars, they are for guidance purposes only. All measurements are approximate and for general guidance purposes only and whilst every care has been taken to ensure their accuracy, they should not be relied upon and potential buyers are advised to recheck the measurements

46 Long Street, Wigston, Leicestershire, LE18 2AH

info@phillipsgeorge.co.uk  
0116 216 8178

