



£600,000

5 Willowbay Close  
Barnet  
EN5 2PJ

EPC Rating '74'

Council Tax Band

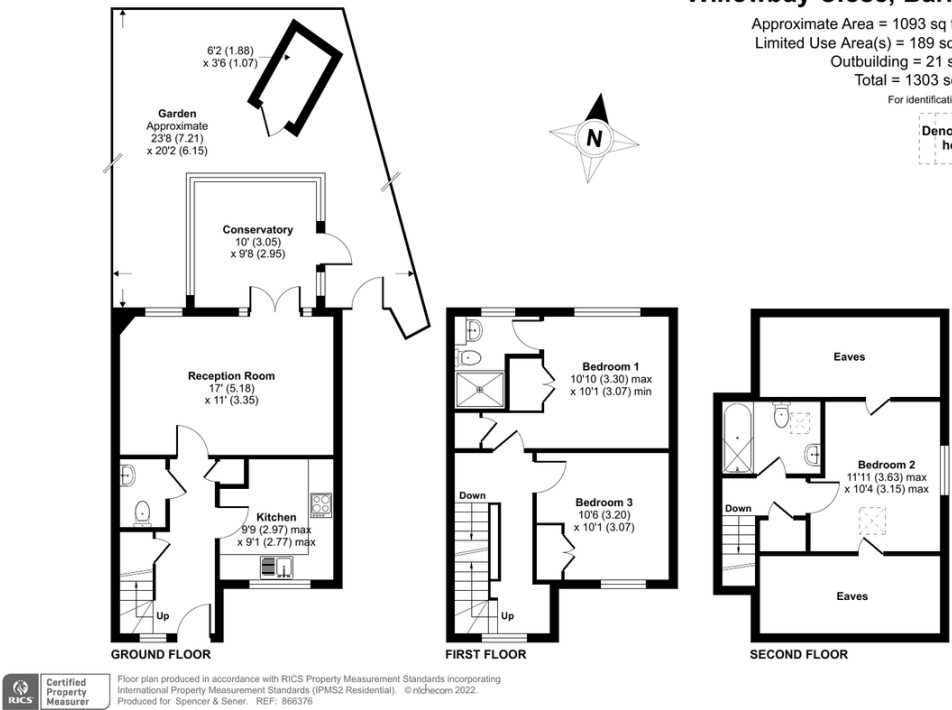
- Three Double Bedrooms
- End Of Terrace
- Kitchen/Breakfast Room
- Reception Room
- Conservatory
- Current EPC Rating C
- Two Bathrooms
- Allocated Parking

Willowbay Close, Barnet, EN5

Approximate Area = 1093 sq ft / 101.5 sq m  
Limited Use Area(s) = 189 sq ft / 17.6 sq m  
Outbuilding = 21 sq ft / 1.9 sq m  
Total = 1303 sq ft / 121 sq m

For identification only - Not to scale

Denotes restricted  
head height



Agents Note: Whilst every care has been taken to prepare these particulars, they are for guidance purposes only. All measurements are approximate and for general guidance purposes only and whilst every care has been taken to ensure their accuracy, they should not be relied upon and potential buyers/tenants are advised to recheck the measurements