

Parsons Place

Swindon SN25 2UF





Parsons Place, Tadpole Garden Village, Swindon SN25 2UF

This beautiful, imposing detached four bedroom house is set within the prestigious Tadpole Garden Development, Swindon, having been built by the well known developer Crest Nicholson, surrounded by nature reserves.

The property comprises of: Entrance hall with downstairs w/c, study, good sized living room with feature bay window, utility room and large open planned kitchen / dining / family room with patio doors opening on to the westerly facing garden. The kitchen itself has been upgraded and now has a breakfast bar. Upstairs you will find four double bedrooms, two with an en-suite and a stunning family bathroom. The property further benefits from gas central heating, integrated appliances in the kitchen, double glazing, off road parking and separate detached garage.

Council Tax Band: F

There is also a communal management charge of £250 per year.







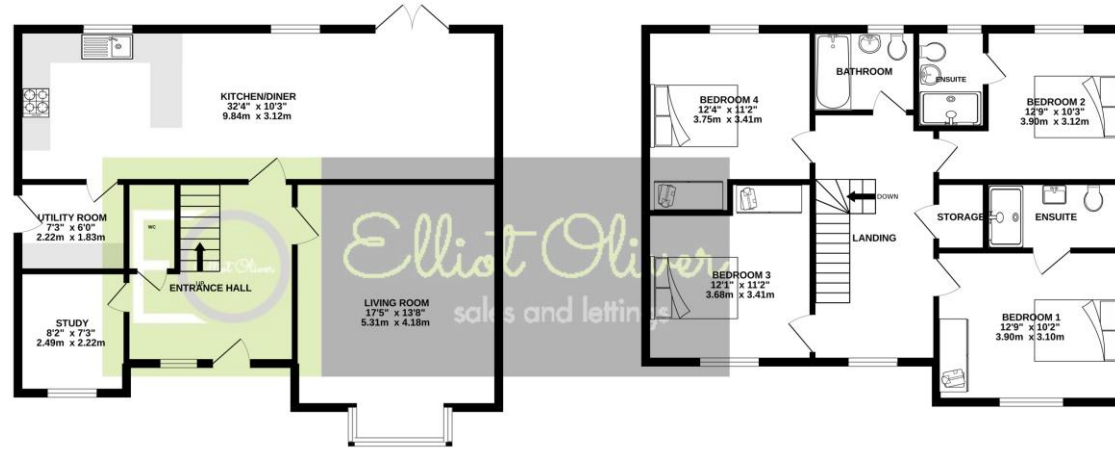




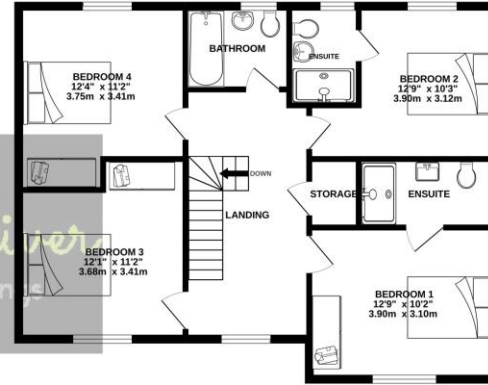
GARAGE
209 sq.ft. (19.4 sq.m.) approx.



GROUND FLOOR
794 sq.ft. (73.7 sq.m.) approx.

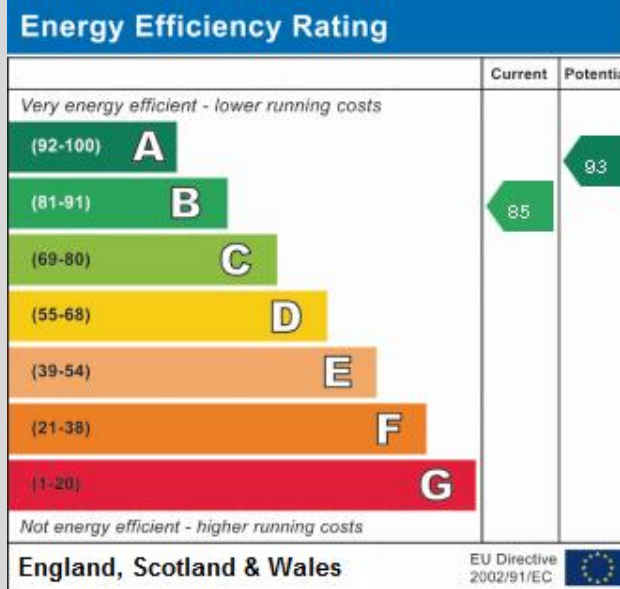


1ST FLOOR
705 sq.ft. (65.2 sq.m.) approx.



TOTAL FLOOR AREA: 1593sq.ft. (148.0 sq.m.) approx.

Whilst every attempt has been made to ensure the accuracy of the floorplan contained here, measurements of doors, windows, rooms and any other items are approximate and no responsibility is taken for any error, omission or mis-statement. This plan is for illustrative purposes only and should be used as such by any prospective purchaser. The services, systems and appliances shown have not been tested and no guarantee as to their operability or efficiency can be given.
Made with Metropix ©2022



OFFICE
101 Promenade,
Cheltenham,
Gloucestershire, GL50
1NW
info@elliottoliver.co.uk

Agents Note: Whilst every care has been taken to prepare these sales particulars, they are for guidance purposes only. All measurements are approximate and for general guidance purposes only and whilst every care has been taken to ensure their accuracy, they should not be relied upon and potential buyers are advised to recheck the measurements