



Orange Street, London. WC2
£620,000 (Subject to Contract)

› 1 Bedroom › 1 Bathroom

TAVISTOCKBOW
RESIDENTIAL



- › Smart period residential building
- › 1 bedroom
- › Open plan kitchen reception
- › North/ south facing
- › Ground floor
- › Very high ceilings
- › Double glazed windows
- › Modern bathroom
- › Low outgoings
- › Long lease

This fabulous one bedroom apartment is centrally located in within Covent Garden's vibrant West End. Orange Street is near Leicester and Trafalgar Square with easy access to the many world-renowned theatres, restaurants and galleries.

The apartment is located on the ground floor of this characterful residential building and benefits from very high ceilings, an open

plan kitchen reception space which has ample space for entertaining. There is a further modern bathroom and good-sized double bedroom.

Transport links are excellent with both Leicester Square and Piccadilly Underground stations within very close proximity. There is also a plentiful supply of bus routes that service links across the West End and wider London.





WHAT WE LOVE

1 bedroom
Open plan kitchen reception
Very high ceilings
Central West End
Quiet Street.

WHAT YOU NEED TO KNOW

Long leasehold expiring 24/03/2177 (155 years remaining)
Service charge £1,025 per year
Zero ground rent
City of Westminster
Council tax band E £1,056.16.



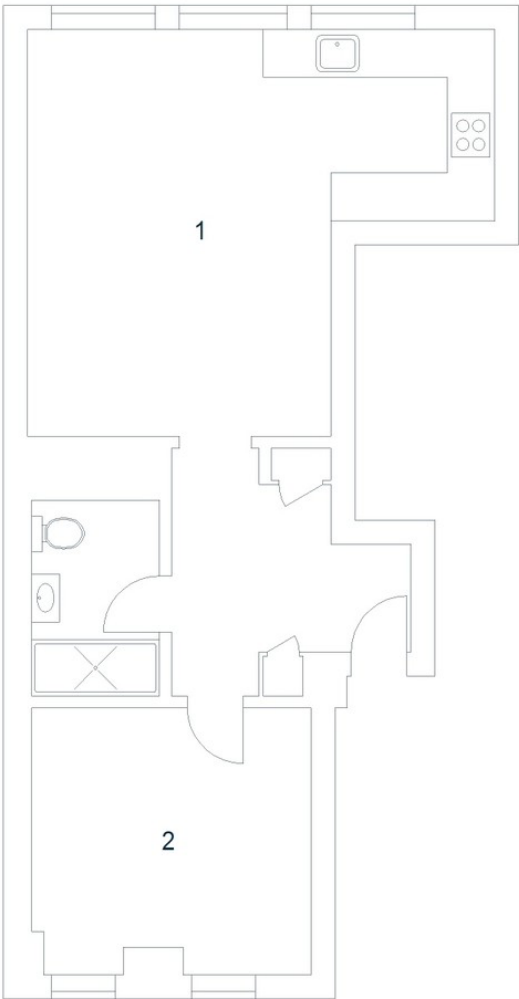
Floorplan

Orange Street, WC2

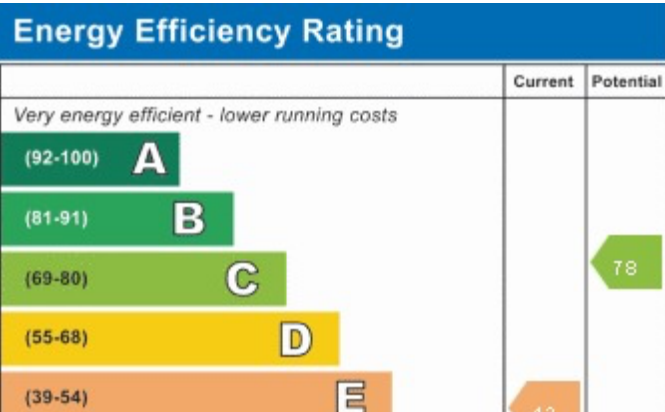
Approximate Gross Internal Area 50 sq m / 538 sq ft

Ground Floor

- 1 Kitchen / Reception Room
5.86 x 5.10M
19'3" x 16'9"
- 2 Bedroom
3.50 x 3.34M
11'6" x 10'11"



EPC



About Us

Tavistock Bow is an independent residential agency based in Covent Garden. We are niche, boutique, creative, knowledgeable, professional and approachable. We love what we do and that's why we do it.

Contact Us

- a. 21 New Row, Covent Garden,
- t. WC2N 4LE
- e. 020 7477 2177
- w. hello@tavistockbow.com
tavistockbow.com

- f /tavistockbow
- i /tavistockbow
- t @tavistockbow

Floor Plan produced for Tavistock Bow by Mays Floorplans © . Tel 020 3397 4594
Illustration for identification purposes only, not to scale.