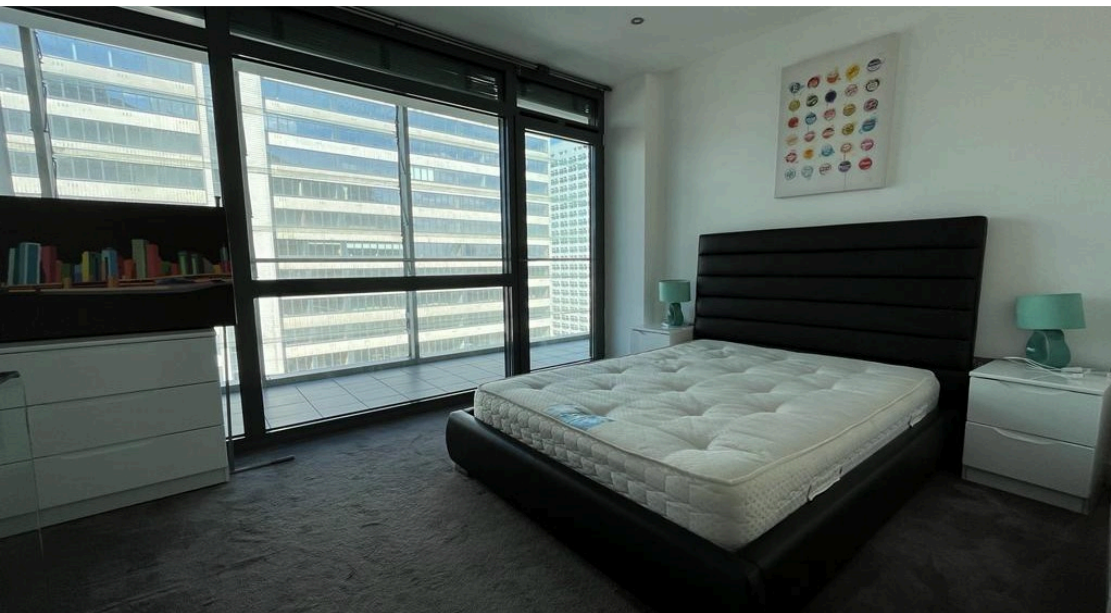




 **2**
Bedrooms

 **2**
Bathrooms



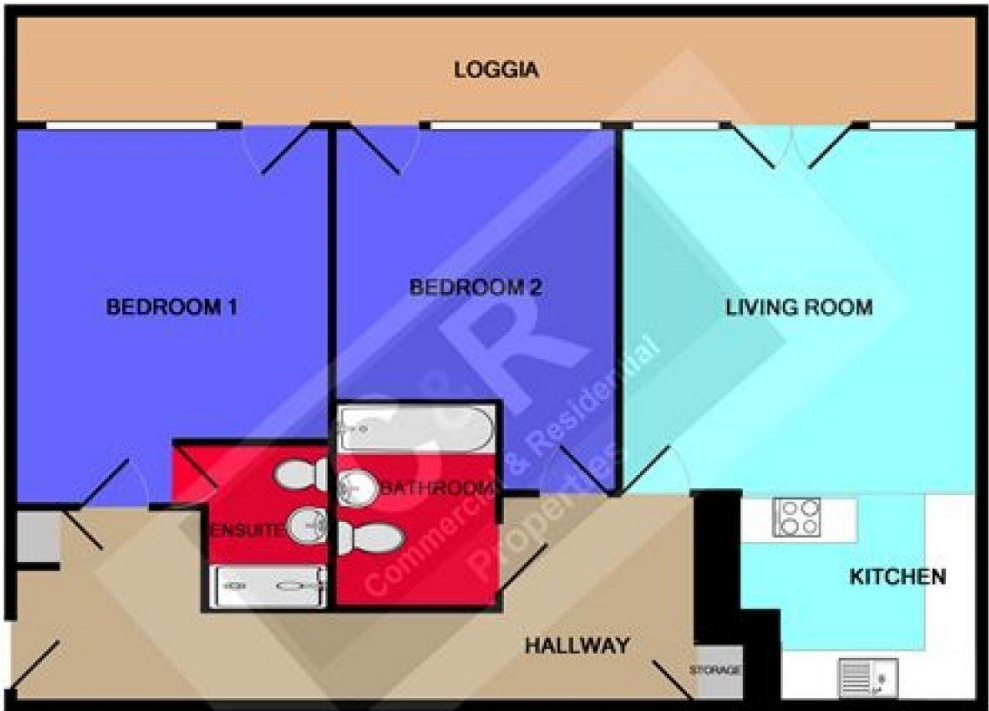
****Available Now**** C & R City are pleased to bring to the market this immaculately presented Two double bedroom apartment in the iconic Number 1 Deansgate development. This fabulous apartment is located in one of Manchester's most prestigious addresses and is right in the heart of Manchester's designer shopping district as well as the huge array of exclusive bars and restaurants that are on your doorstep. It is an award-winning development, being winner of the 2003 RIBA Awards for Ian Simpson Architects and as of 2007 it was also the tallest all steel residential building in the UK.

****Available Now**** C & R City are pleased to bring to the market this immaculately presented Two double bedroom apartment in the iconic Number 1 Deansgate development. This fabulous apartment is located in one of Manchester's most prestigious addresses and is right in the heart of Manchester's designer shopping district as well as the huge array of exclusive bars and restaurants that are on your doorstep. It is an award-winning development, being winner of the 2003 RIBA Awards for Ian Simpson Architects and as of 2007 it was also the tallest all steel residential building in the UK.

The apartment comprises of: spacious entrance hall leading to an open plan living room/kitchen which provides access to the balcony. The master bedroom has an en-suite and there is a second double room and separate family bathroom. The balcony can also be access from both bedrooms. The development is manned by a 24-hour concierge and there is also a secure allocated parking space included.

Council Tax Band: F

EPC Rating: D



Energy Efficiency Rating		Current	Potential
Very energy efficient - lower running costs			
(92-100)	A		
(81-91)	B		
(69-80)	C		79
(55-68)	D	87	
(39-54)	E		
(21-38)	F		
(1-20)	G		
Not energy efficient - higher running costs			
England, Scotland & Wales		EU Directive 2002/91/EC	



COMMERCIAL & RESIDENTIAL PROPERTIES (UK) LTD

Whilst every attempt has been made to ensure the accuracy of the floor plan contained here, measurements of doors, windows, rooms and any other items are approximate and no responsibility is taken for any error, omission, or mis-statement. This plan is for illustrative purposes only and should be used as such by any prospective purchaser. The services, systems and appliances shown have not been tested and no guarantee as to their operability or efficiency can be given.
Made with Metropix ©2014