



## Chicheley Street, Waterloo £900,000 Leasehold

A rarely available, oversized, sub penthouse apartment enjoying a wonderful corner position within County Hall

- SUB-PENTHOUSE
- LEISURE COMPLEX
- 24 HOUR CONCIERGE
- HUGE LIVING ACCOMMODATION
- PARKING INCLUDED
- WORLD CLASS LOCATION

# Chicheley Street, Waterloo

£900,000 Leasehold

---

From the moment you enter this beautiful apartment you will be struck by the spacious accommodation available. The large entry hallway area, with discreet storage, leads through to the central hallway, offering access to the copious living accommodation.

The apartment enjoys a large corner position, with each room affording extremely generous accommodation, making it entirely suitable for full family living, as well as those who enjoy entertaining.

The lounge area has two well positioned windows with side views toward the London Eye and flows naturally into the large and fully fitted kitchen area. The master bedroom is flooded with light and enjoys a huge dressing room. The dressing room alone would be considered to be the size of a further bedroom in most other apartments. This magnificent space flows naturally into the large en-suite bathroom.

A further beautifully light bedroom, of marvellous proportions, affords built in furniture and a further en-suite.

An additional guest cloakroom completes this wonderful, fully redecorated, accommodation.

With 24-hour concierge, swimming pool and gym, secure underground parking and being within moments of many of London's most well-known landmarks and travel hubs, County Hall offers World class accommodation to the most discerning of people. Early viewing of this beautiful apartment is considered essential.

# Chicheley Street, Waterloo

£900,000 Leasehold

---



# Chicheley Street, Waterloo

£900,000 Leasehold

---



# Chicheley Street, Waterloo

£900,000 Leasehold

---





# Chicheley Street, Waterloo

£900,000 Leasehold

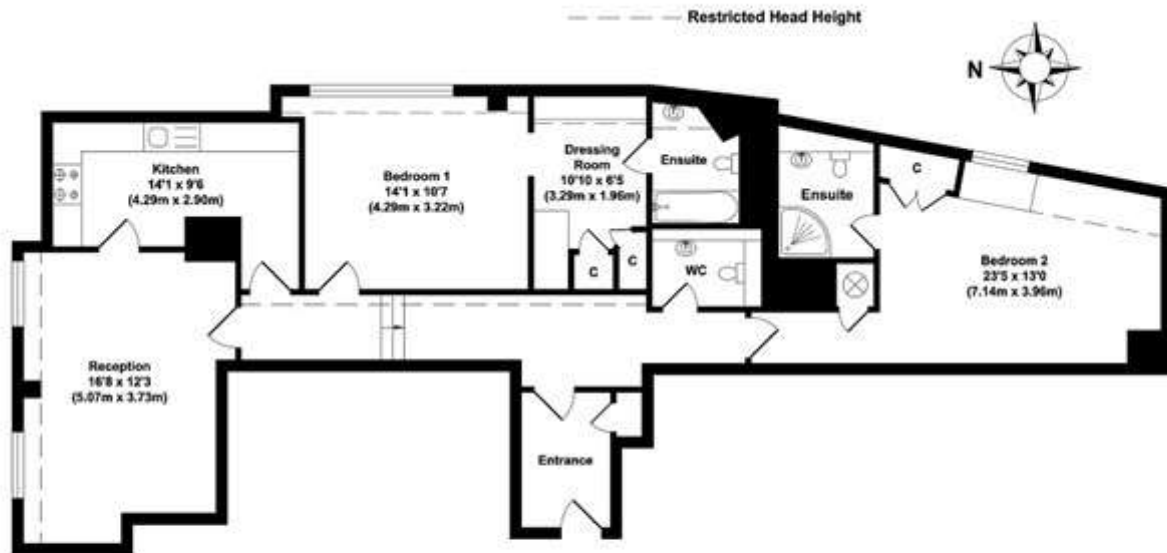


Viewings via: Icon Residential, 52 Grosvenor Gardens, London, SW1W 0AU

# Chicheley Street, Waterloo

## £900,000 Leasehold

---



**TOTAL APPROX FLOOR AREA 1025.04 SQ. FT. (AREA 95.23 SQ. M)**

whilst every attempt has been made to ensure the accuracy of the floor plan contained here, measurements of doors, windows, rooms and any other items are approximate and no responsibility is taken for any error, omission or mis-statement. This plan is for illustrative purposes only and should be used as such by any prospective purchaser. The services, systems and appliances shown have not been tested and no guarantee as to their operability or efficiency can be given.