



Flat 4, 90 Philbeach Gardens, London, SW5 9EU

Asking Price Of: £1,050,000



Flat 4, 90 Philbeach Gardens, London, SW5 9EU

Large and bright reception | Quiet and leafy street | Access to Philbeach Gardens | Within a short

DESCRIPTION

This bright and light two bedroom two bathroom property is situated in a lovely victorian building, on a quiet leafy street and overlooking the beautiful Philbeach gardens. Within a short walk to Earls Court station and West Brompton station as well as all the amenities of Kensington High Street and Earls Court Road.

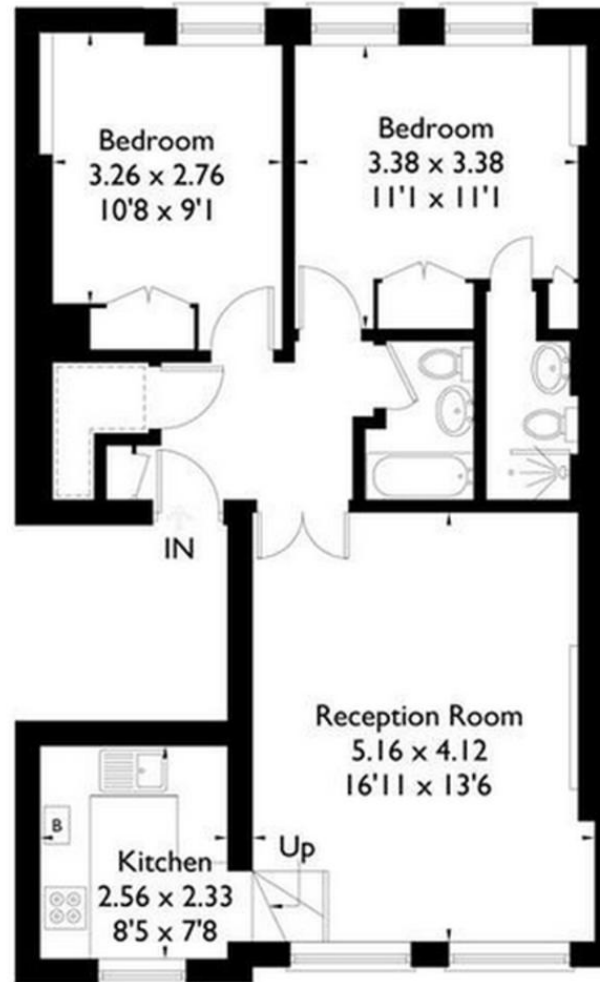
KEY FEATURES

- Large and bright reception
- Quiet and leafy street
- Access to Philbeach Gardens
- Within a short walk to Earls Court Station
- Close to all the amenities
- Main bedroom with en-suite bathroom
- Well kept communal areas









Philbeach Gardens, SW5

Approximate Gross Internal Area = 63.1 sq m / 679 sq ft



Second Floor

Floorplanz © 2015
0845 6344080 Ref: 140908

This plan is for layout guidance only.
Drawn in accordance with
RICS guidelines. Not drawn to
scale, unless stated. Windows &
door openings are approximate.
Whilst every care is taken in the
preparation of this plan, please check
all dimensions, shapes & compass
bearings before making any
decisions reliant upon them.

ADDITIONAL INFORMATION

Tenure: Share of Freehold

Local Authority: Kensington and Chelsea Royal

Borough Council