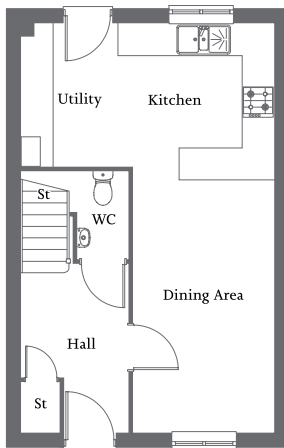


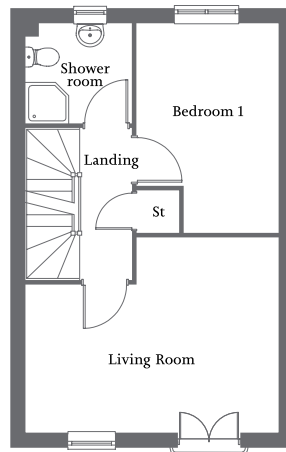


| Front aspect living room with Juliet balcony | Open-plan kitchen/dining area with utility |  
| Bedroom 1 with garden aspect | Three further bedrooms and family bathroom | Single garage and allocated parking space(s) |



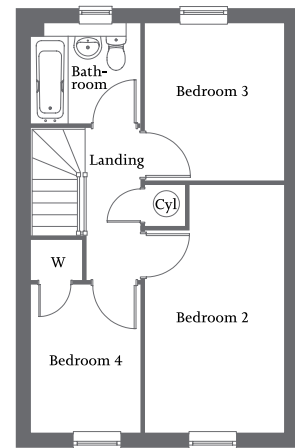
**Ground Floor**

Kitchen	3.01m x 2.76m	9'9" x 9'1"
Dining Area	5.12m x 2.72m	16'8" x 8'9"
Utility	2.76m x 1.85m	9'1" x 6'1"



**First Floor**

Living Room	4.86m x 3.76m	15'9" x 12'3"
Bedroom 1	4.03m x 2.74m	13'2" x 8'10"
Shower Room	2.02m x 1.91m	6'7" x 6'3"



**Second Floor**

Bedroom 2	4.78m x 2.67m	15'7" x 8'8"
Bedroom 3	3.02m x 2.68m	9'9" x 8'8"
Bedroom 4	2.85m x 2.09m	9'4" x 6'9"
Bathroom	2.09m x 1.91m	6'9" x 6'3"