

Bramble Chase

Cheltenham GL52 8WN





Bramble Chase, Bishops Cleeve, Cheltenham, GL52 8WN

This imposing, detached three double bedroom property was built by the well known developer Robert Hitchins and is situated on a corner plot in the popular village of Bishops Cleeve.

The accommodation on the ground floor consists of an entrance hall, open plan kitchen/dining room, utility room, and cloakroom. The living areas consists of a lounge, study and a good sized conservatory. Upstairs the property offers three double bedrooms, en suite to the main bedroom and a family bathroom. Outside this home offers a wonderful rear garden, off road parking for ample cars and lastly a garage. This is a must view house close to the village amenities.

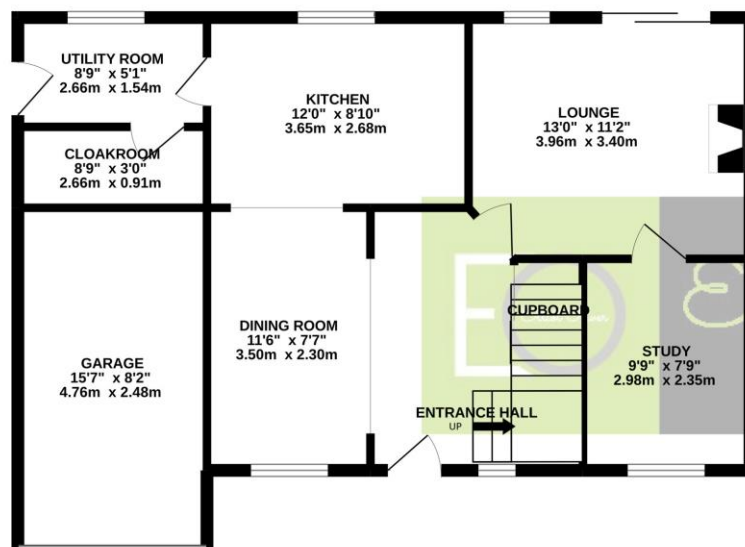
Council Tax Band: E



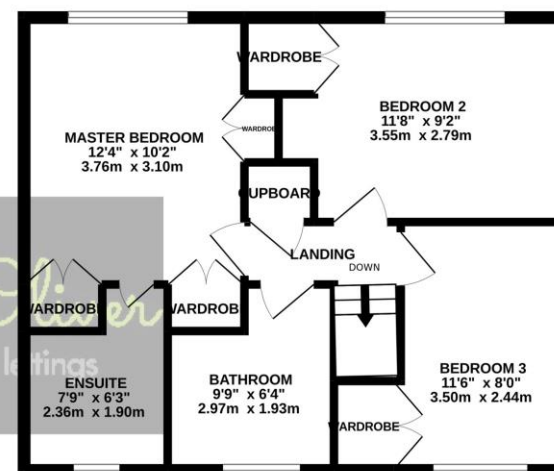




GROUND FLOOR
733 sq.ft. (68.1 sq.m.) approx.



1ST FLOOR
525 sq.ft. (48.7 sq.m.) approx.



TOTAL FLOOR AREA : 1257 sq.ft. (116.8 sq.m.) approx.

Whilst every attempt has been made to ensure the accuracy of the floorplan contained here, measurements of doors, windows, rooms and any other items are approximate and no responsibility is taken for any error, omission or mis-statement. This plan is for illustrative purposes only and should be used as such by any prospective purchaser. The services, systems and appliances shown have not been tested and no guarantee as to their operability or efficiency can be given.
Made with Metropix ©2022



OFFICE

101 Promenade,
Cheltenham,
Gloucestershire, GL50
1NW
info@elliottoliver.co.uk