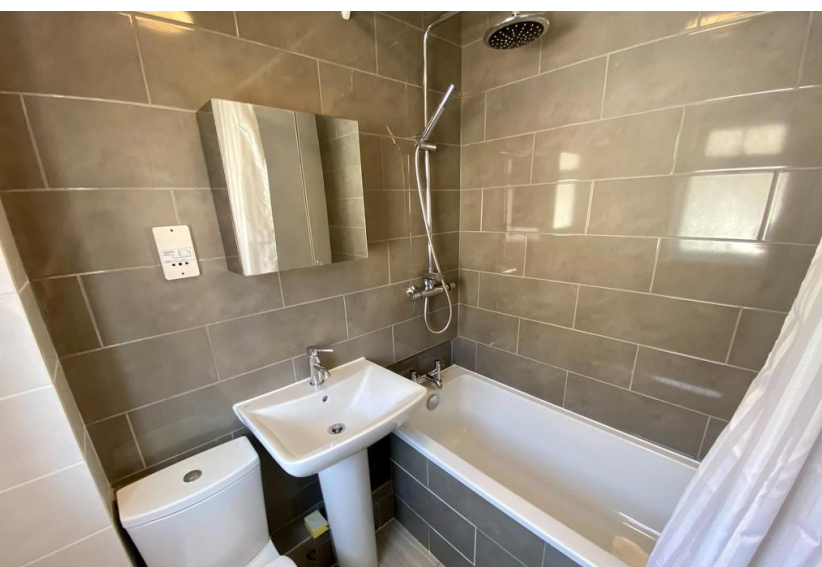


HANOVER SHINE

HARROW

www.hanovershine.co.uk



- Spacious 1 bedroom flat
- Secure private rear garden
- Large lounge-diner
- Recently updated bathroom
- EPC Rating: Energy Efficiency Rating TBC.

61a Sherwood Road, Middlesex, HA2 8AW

£1,250 pcm

NEWLY IMPROVED spacious 1 bedroom UNFURNISHED ground floor flat with PRIVATE REAR GARDEN. Large lounge-diner & open-plan kitchen, double bedroom with LARGE FITTED WARDROBE, good storage space, UPDATED BATHROOM, private entrance and PARKING FOR 2 CARS. Close to shops & station. HIGHLY RECOMMENDED!