



Harbour Court, Compass Road, Portsmouth, PO6 4ST

Headquarters Office Building
Prominent location on the central south coast
Suites Available from 2,900 sq.ft

Summary

Tenure	To Let
Available Size	2,900 to 24,139 sq ft / 269.42 to 2,242.59 sq m
Rates Payable	£227,840 per annum
Rateable Value	£445,000

Key Points

- Excellent communication links
- Close to local amenities and hotels
- Landscaped grounds
- 142 car parking spaces



Description

The property is a detached Headquarters style office building set within landscaped grounds. Providing accommodation over three floors. Suites now available from 2,900 sq.ft.

Location

North Harbour Business Park is an established commercial location just 4 miles north west of Portsmouth city centre and located 1 mile from the M27(Junction 12) connecting the area with key surrounding commercial cities as well as the national motorway network.

North Harbour benefits from easy access to two railway stations; Portchester (1 mile west) and Cosham (2 miles east). Both stations provide regular services to London Waterloo as well as surrounding towns. Portsmouth & Southsea railway station is just 5 miles south east providing additional, frequent rail services. Southampton International Airport is located 18 miles west of North Harbour accessed directly via the M27 (Junction 5). It is the main business airport for the South Coast.

Accommodation

The accommodation comprises of the following

Name	sq ft	sq m
Ground - Office	11,370	1,056.31
Ground - Reception	818	75.99
Ground - Storage	139	12.91
1st - Office	11,389	1,058.07
1st - Storage	18	1.67
2nd - Office	405	37.63
Total	24,139	2,242.58

Specification

- Open plan floor plates
- Full accessed raised floors
- Suspended ceilings
- Air conditioning
- WC's on each floor
- Ground floor reception area
- 142 car parking spaces
- Passenger lift

Terms

A new lease available direct with the landlord on terms to be agreed.

Business Rates

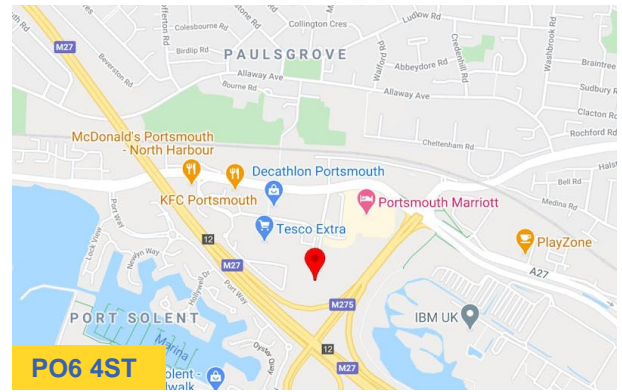
From our enquiries via www.voa.gov.uk we understand the combined rateable value of the property to be £445,000. However, interested parties are advised to confirm the accuracy of this information with the local authority.

Legal Costs

Each party to bear their own legal costs incurred in the transaction

Video

- Drone Footage - <https://vimeo.com/manage/videos/568925622>



Viewing & Further Information

Tom Holloway

023 9237 7800 | 07887602603

tom@hi-m.co.uk

More properties like this at www.hi-m.co.uk

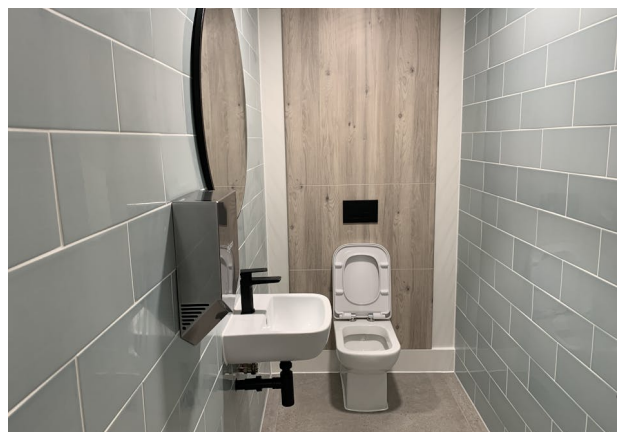
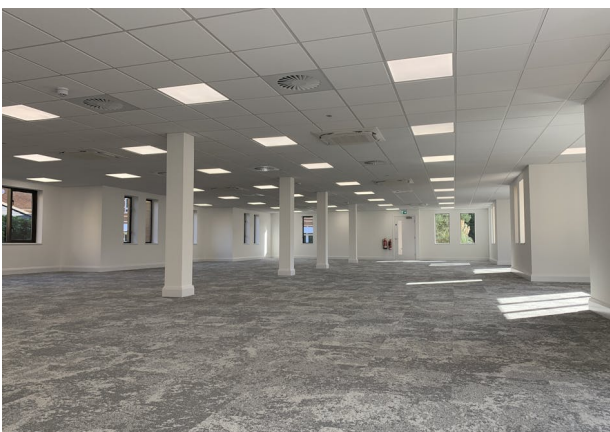
023 9237 7800



hi-m.co.uk

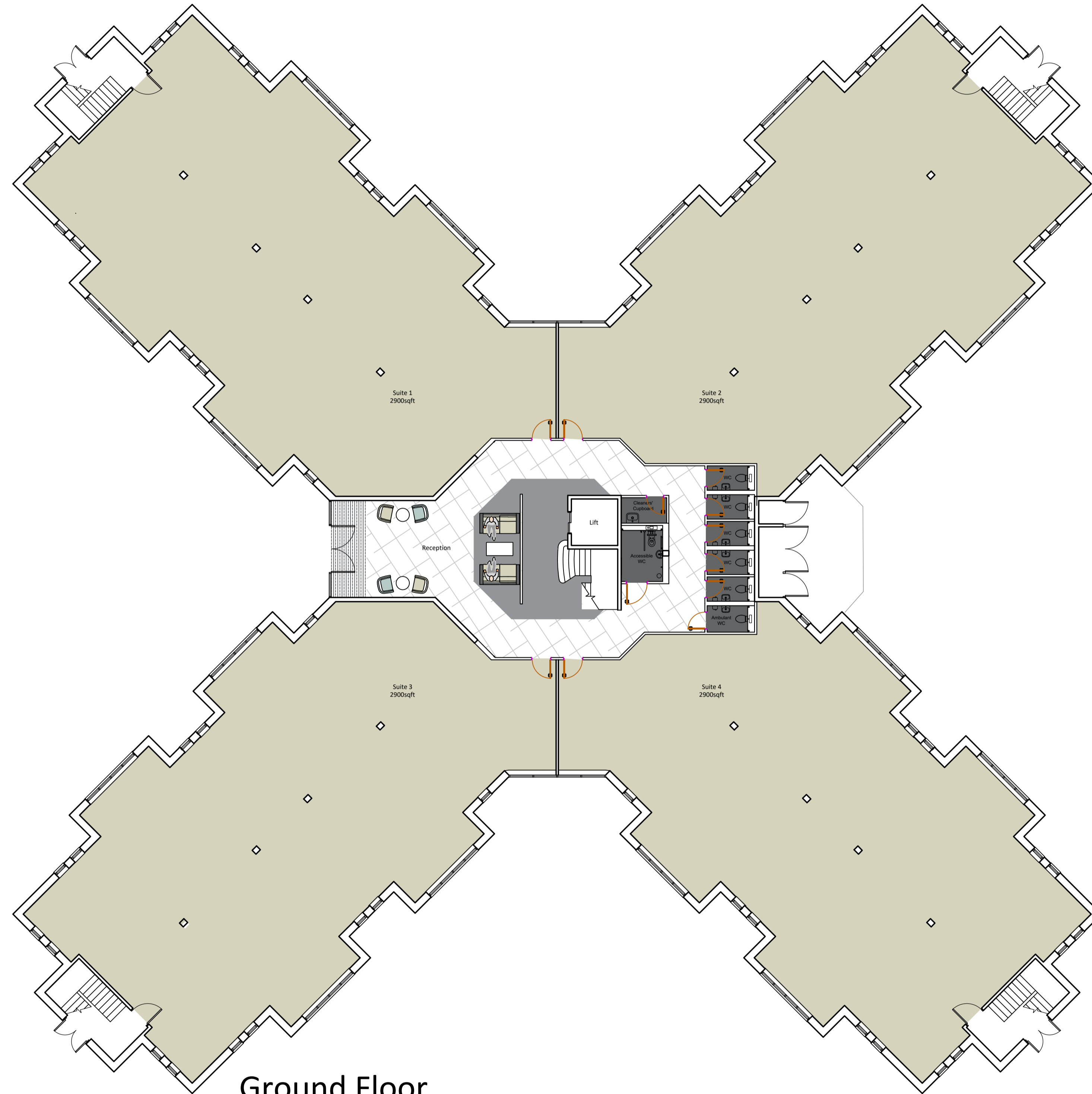
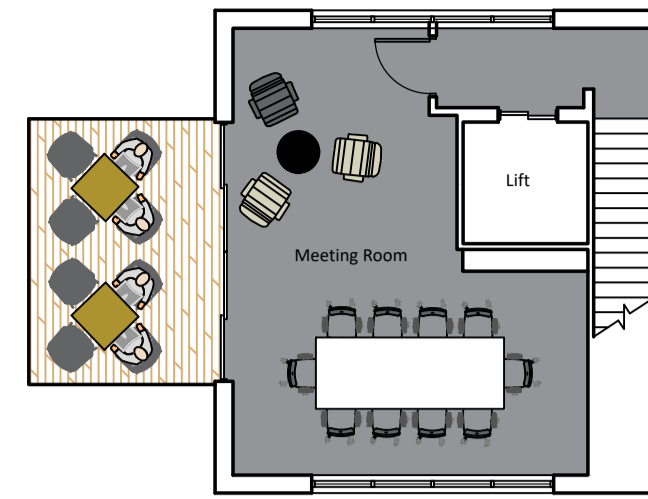
For the Lessors or Vendors of this instruction, whose Agents they are, give notice that, These particulars are set out as general guidance only to intending Purchasers or Lessees, and do not constitute any part of an offer or contract. Details are given without any responsibility and any intending Lessees, Purchasers or Third Parties should not rely on them as statements or representations of fact, but must satisfy themselves by inspection or otherwise as to the correctness of each of them. No person in the employment of Holloway Iliffe & Mitchell has any authority to make any representation or warranty whatsoever in relation to this property. Unless stated, all prices and rents are quoted exclusive of VAT Generated on 09/09/2024



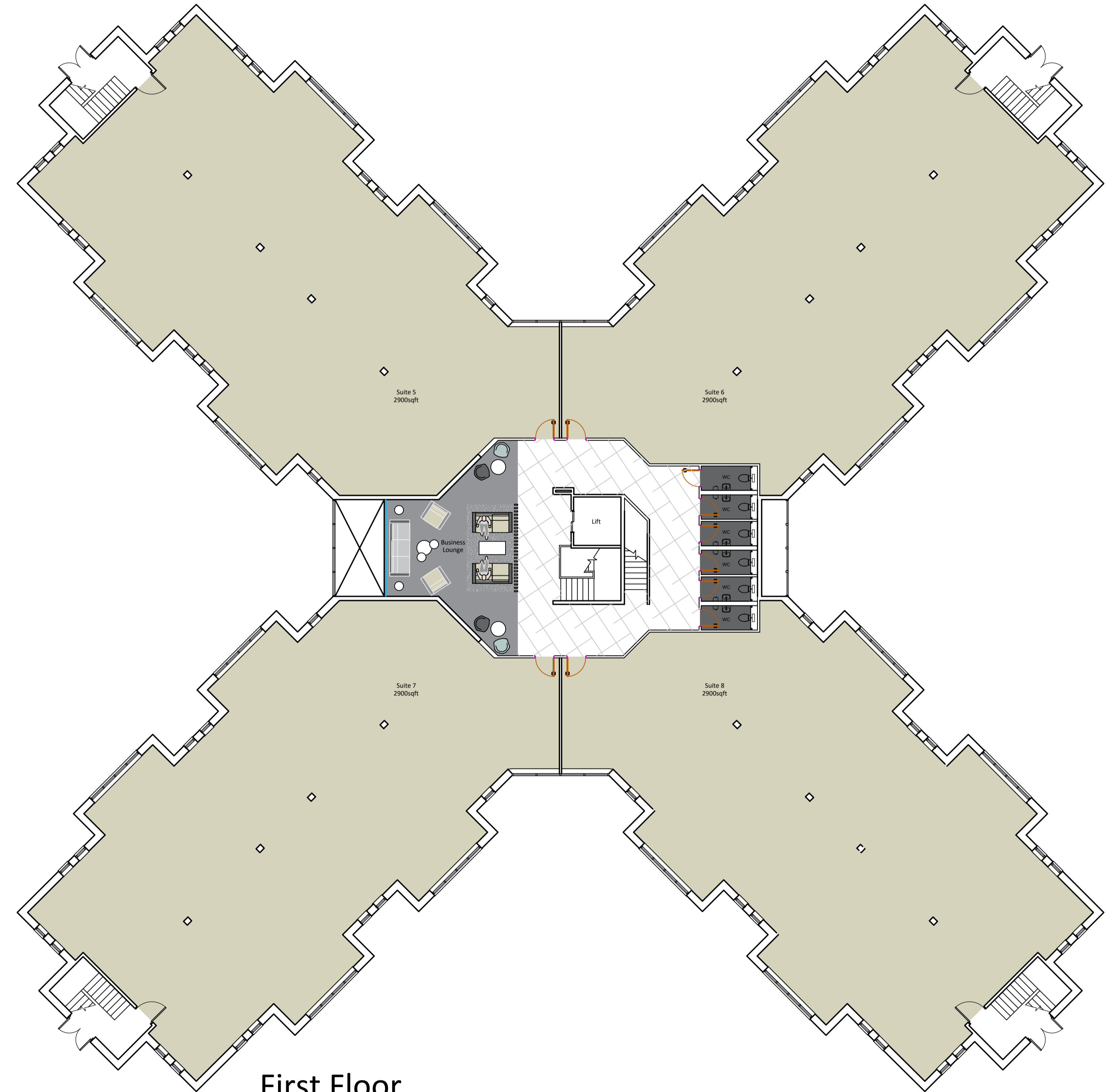




Second Floor



Ground Floor



First Floor

This drawing is protected under Copyright and all rights reserved. No part of this drawing may be reproduced or copied without the permission of Vibe Business Interiors Ltd.
 This drawing must not be used for purposes other than that for which it is provided. It is supplied without liability for any errors or omissions.
 For the avoidance of doubt, we make no claim that all designs and any coverings derived from them, are subject only to our reasonable skill and care.
 Do not scale from this drawing. Check all dimensions on site. Subject to statutory approval & the survey Building outline taken from drawings provided.

Vibe Business Interiors
 Lancaster Court, 8 Barnes Wallis Road, Fareham
 0845 301 6834
 vibe-bi.co.uk

Client	KA Investments		
Drawing	General Layout		
Address	Harbour Court, Portsmouth		
Date	05/01/22	Scale	NTS
Drawing Number	P2924	D	G000 00 CWR

