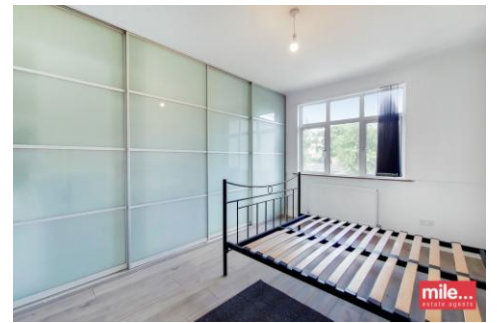




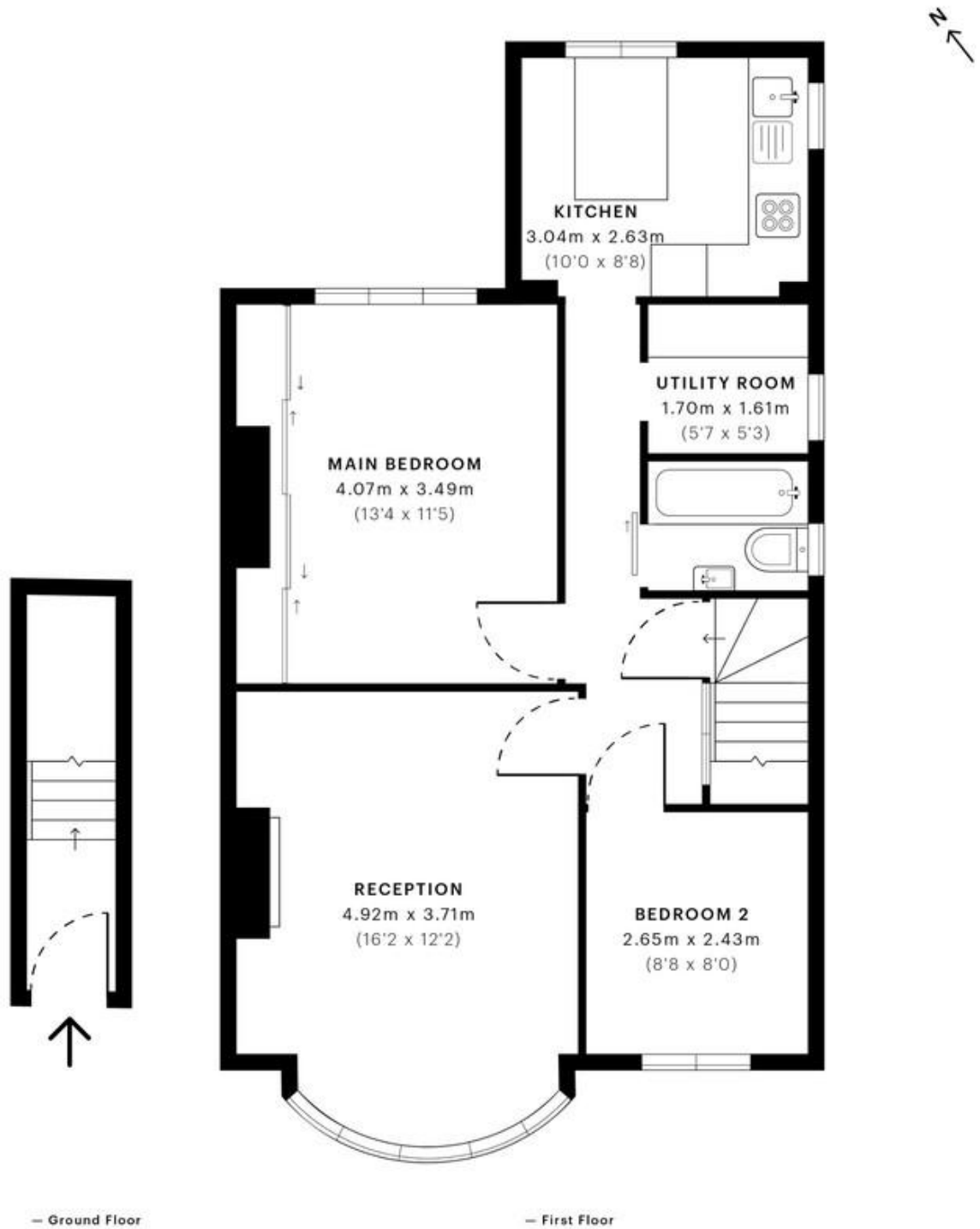
MILE



Wrotesley Road, London NW10  
£1,850 pcm

Mile are pleased to bring to market this newly refurbished first floor apartment to let in NW10 with off street parking!

- First floor apartment
- Two bedroom
- Newly refurbished
- Off street parking
- Available mid August!
- Own entrance
- Separate utility room
- Bright and airy
- Excellent condition
- Close to shops and restaurants



**GROSS INTERNAL AREA (GIA)**  
The footprint of the property  
64.25 sqm / 691.58 sqft

**NET INTERNAL AREA (NIA)**  
Excludes walls and external features  
Includes washrooms, restricted head height  
58.98 sqm / 634.86 sqft

**EXTERNAL STRUCTURAL FEATURES**  
Balconies, terraces, verandas etc.  
0.00 sqm / 0.00 sqft

**RESTRICTED HEAD HEIGHT**  
Limited use area under 1.5 m  
0.00 sqm / 0.00 sqft