





Property Summary

Ground floor garden flat. A bit scruffy, but with 'bags of potential'. Great street, great price. No chain.

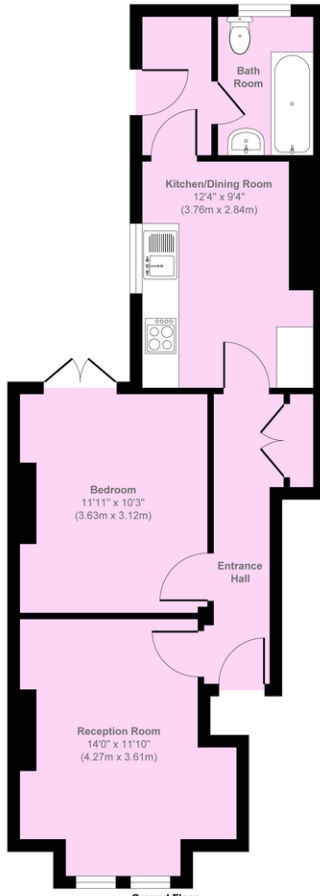
Property Features

- Garden Flat
- Sole Use of Garden
- 1 Bedroom
- Room to extend
- Living Room
- Separate Kitchen
- Modern Bathroom
- Needs 'fixing up'
- Great Street
- Near good stations





Mount Pleasant Road, SE13 6HX



Ground Floor
Approximate Floor Area
524 sq. ft
(48.68 sq. m)

Approx. Gross Internal Floor Area 524 sq. ft / 48.68 sq. m

Illustration for identification purposes only, measurements are approximate, not to scale.

Copyright © markbeaumont.com
Produced by Elements Property

Score	Energy rating	Current	Potential
92+	A		
81-91	B		
69-80	C		75 C
55-68	D	63 D	
39-54	E		
21-38	F		
1-20	G		

South London Branch, 197 Lewisham
High Street, London, SE13 6AA

www.markbeaumont.com
sales@markbeaumont.com
020 8852 5000

Agents Note: Whilst every care has been taken to prepare these particulars, they are for guidance purposes only. All measurements are approximate and for general guidance purposes only and whilst every care has been taken to ensure their accuracy, they should not be relied upon and potential buyers are advised to recheck the measurements.