



## People Make Places



**Centre Point Residences, New Oxford Street WC1**

2 bedrooms | 1,281 sq ft

£1,730 pw





A beautifully presented two bedroom, two bathroom apartment to rent in the iconic Centre Point Residences. The apartment has access to incredible facilities including a 24 hour concierge service, a state of the art gym, swimming pool, members lounge, and cinema.

#### What you need to know

- Two bedrooms
- Two bathrooms (both en-suite)
- 14th Floor (with lift)
- 24 Hour concierge
- Pool, gym, cinema room facilities
- Furnished
- Air conditioning
- Amazing restaurants
- Opposite Tottenham Court Road station
- Available immediately





### Overview

The apartment is located on the fourteenth floor (with 6 passenger lifts), and boasts a large open plan living room complete with a modern kitchen, two large bedrooms with fitted wardrobes and beautifully appointed modern bathrooms. The property benefits from bespoke furniture installed throughout, giving it a feel of pure luxury.

The property is available immediately on a furnished basis. There will be a 1-3 year tenancy, with mutual break clauses as agreed, subject to contract and satisfactory references. Camden council tax band F.

Centre Point is an iconic London Landmark and is perfectly located on the borders of Soho, Oxford Street, Bloomsbury, Fitzrovia and Covent Garden. There are many shops, bars, restaurants and theatres in the area. There are fantastic transport links including Tottenham Court Road (Elizabeth, Northern & Central lines) and Oxford Circus (Victoria, Bakerloo & Central lines) only a short walk away.







# People Make Places

London is collection of inspiring urban villages and one of the most exciting places in the world to live, work & play.

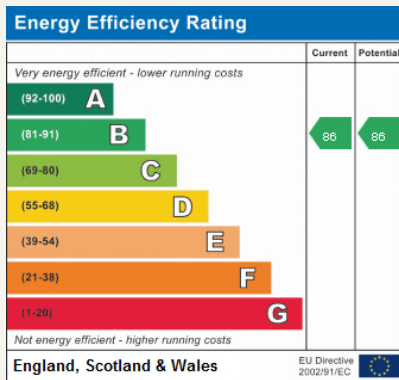
We work with both property owners and their occupiers, sharing the story of these vibrant neighbourhoods, conveying the unique soul & energy to future custodians, the people who'll keep them buzzing.

And unlike many real estate businesses we're not just about buildings, because streets & buildings don't make a neighbourhood.

We're about building relationships, because **people make places**.

MISINTERPRETATION ACT (COPYRIGHT) DISCLAIMER: Tavistock Bow Ltd for themselves and for the vendor(s) of this property whose agents they are, given notice that: 1. These particulars do not constitute, not constitute any part of, an offer or contract. 2. None of the statements contained in these particulars as to the property are to be relied on as statements or representations of fact. 3. Any intending purchaser or lessee must satisfy themselves by inspection or otherwise as to the correctness of each of the statements contained in these particulars. 4. The vendor(s) or lessor(s) do not make or give and neither Tavistock Bow Ltd nor any person in their employment has any authority to make or give any representation or warranty whatever in relation to this property. Finance Act 1989, Unless otherwise stated all prices and rents are quote exclusive of VAT. Property Misrepresentation Act 1991; These details are believed to be correct at the time of compilation but may be subject to subsequent amendment.

Follow us:     @tavistockbow

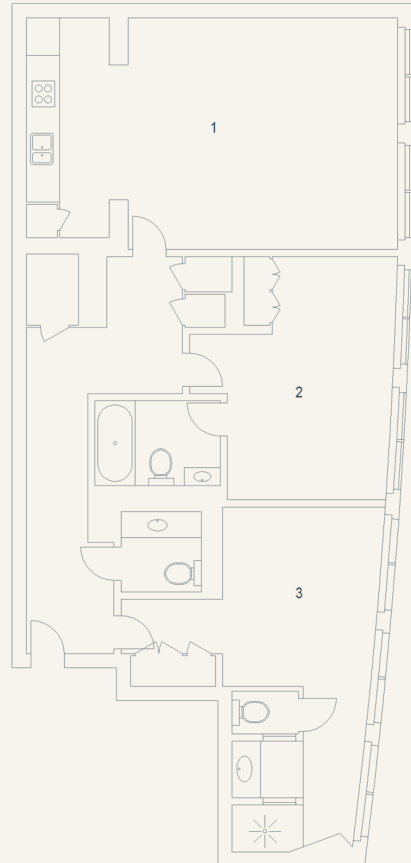


## Centre Point, WC1

Approximate Gross Internal Area 119 sq m / 1281 sq ft

Fourteenth Floor

- 1 Kitchen / Reception Room  
7.87 x 4.90M  
25'10" x 16'1"
- 2 Bedroom  
5.17 x 4.28M  
17' x 14'1"
- 3 Bedroom  
7.29 x 5.44M  
23'11" x 17'10"



Floor Plan produced for Tavistock Bow by Mays Floorplans ©. Tel 020 3397 4594  
Illustration for identification purposes only, not to scale.

**tavistockbow**

21 New Row, Covent Garden,  
London, WC2N 4LE

t: 020 7477 2177  
e: hello@tavistockbow.com  
w: tavistockbow.com



**Centre Point Residences, New Oxford Street WC1**