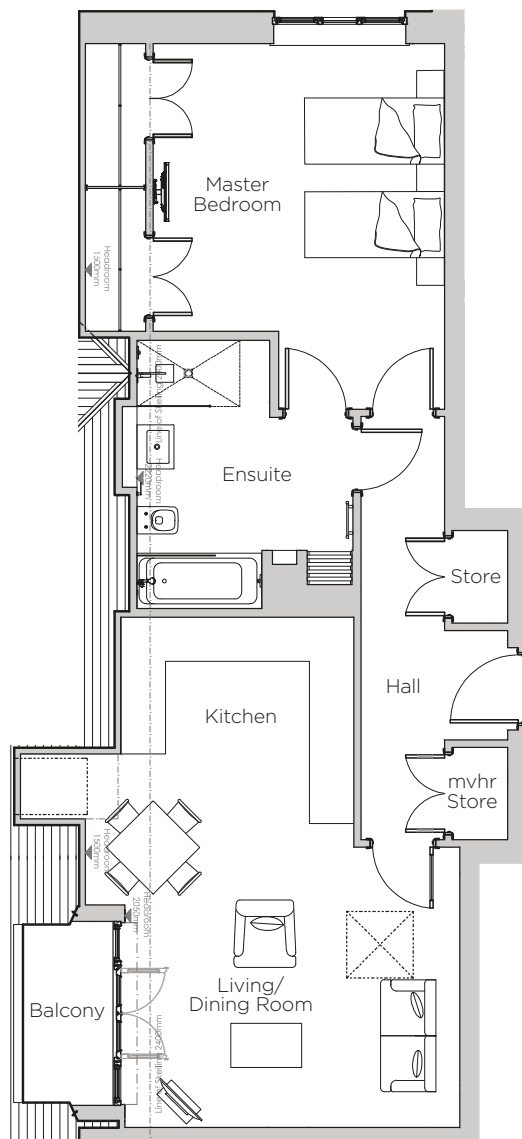


# Audley Stanbridge Earls

Apartment 26  
Kirkeby Court, Second Floor

Plot H19



\*Kitchen layout to be confirmed

Internal Measurements	Metric (m)	Imperial (ft)
Living Room & Kitchen	7.60 x 4.50	24'11" x 14'9"
Master Bedroom	7.47 x 4.29	24'6" x 14'1"
Bedroom 2	4.24 x 3.45	13'11" x 11'4"
Balcony	2.43 x 1.22	8'0" x 4'0"

Audley Stanbridge Earls  
Awbridge, Nr Romsey, Hampshire, SO51 0GY  
01794 278 303  
[www.audleyvillages.co.uk](http://www.audleyvillages.co.uk)



Drawings are preliminary and may be subject to change pending detailed design. Furniture for illustration purposes only. Built-in wardrobes in bedrooms have not been included in the overall dimensions. Maximum measurements shown. These pages are intended for marketing purposes only. Designs vary according to plot and all details should be checked at the Sales Office. February 2019.



# Audley Stanbridge Earls

Apartment 26  
Kirkeby Court, Second Floor



## 1 bedroom, second floor apartment

This second floor, one bedroom apartment has an open plan kitchen and living room and south-west facing private terrace. The master bedroom has fitted double wardrobes and an en suite with both a walk-in shower and separate bath.

Property specifications:

- Open plan living area
- Private, south-west facing balcony
- Luxury SieMatic kitchen
- Master bedroom with en suite and built in wardrobes
- Two storage cupboards in the hallway
- Access to Audley Club
- Lift and stairs access

Audley Stanbridge Earls  
Awbridge, Nr Romsey, Hampshire, SO51 0GY  
01794 278 303  
[www.audleyvillages.co.uk](http://www.audleyvillages.co.uk)

