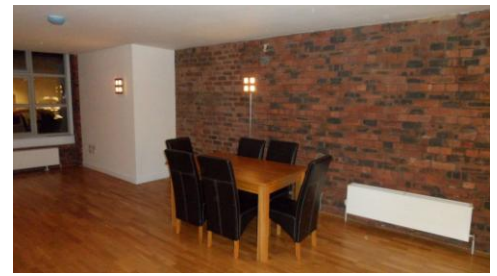




**New Sedwick Mill,
Northern Quarter**

**£1,095
pcm**

- **Period Mill Conversion**
- Apartment with exposed Brickwork
- **Two Large Double Bedrooms**
- Two Bathrooms (1 En-Suite)
- **Large open plan living/dining area**
- Easy access to the motorways
- **Two minute walk from the vibrant Northern Quarter**
- Secure allocated parking space
- **Fully Furnished to a high**



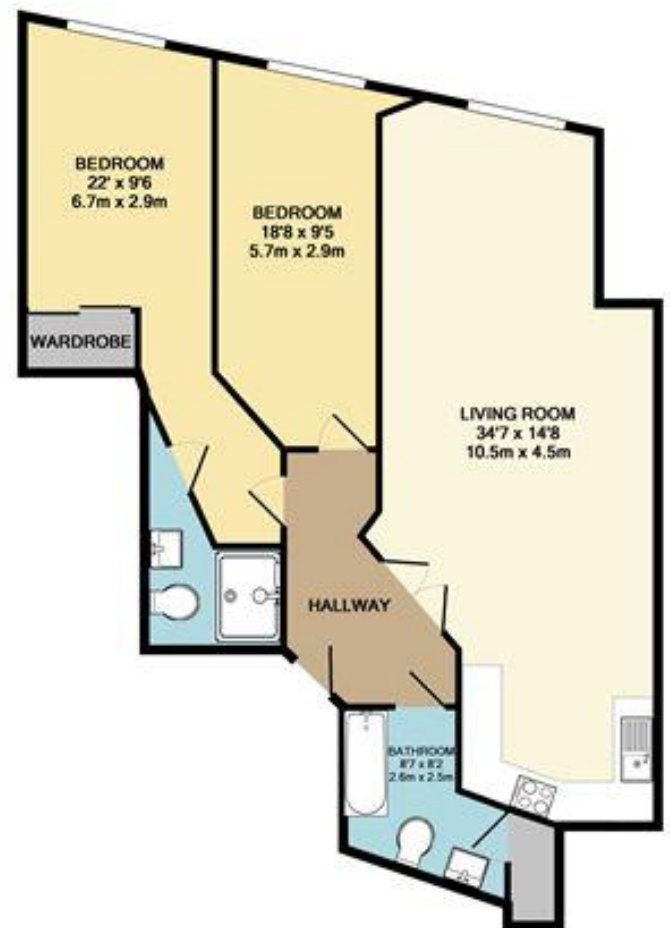
Immaculately presented modern two bedroom apartment located on the second floor. Spacious living room with dining area, fitted kitchen with dishwasher and full height fridge and freezer.

Two good sized double bedrooms, modern bathroom with shower. UPVC double glazing, gas fired central heating and secure gated allocated parking space.

If you are interested in viewing or having a question we are available 8am till 10pm 7 days a week! We will work harder than any agent to ensure you secure the property that's perfect for you at the perfect price for your pocket.

Call Mark or Paul on 07545 073355 or 0161 236 0004 we can even pick you up from home or work to view this property.

It's available today and we have the strength and ability for you to move in today if required.



TOTAL APPROX. FLOOR AREA 954 SQ. FT. (88.6 SQ. M.)

Whilst every attempt has been made to ensure the accuracy of the floor plan contained here, measurements

Open seven days a week,
buckleyfrayne is a proprietor
owned and led business.

**More properties are available
at www.buckleyfrayne.co.uk**