



 **3**
Bedrooms

 **1**
Bathroom





****TRADITIONAL STYLE 1930S THREE BEDROOM SEMI DETACHED WITH NO CHAIN****

****SOLD AS SEEN****

Trading Places are pleased to have on the market this fantastic family property.

On entering the property there is a light and airy hallway with staircase leading to the first floor. To the first floor there are two double bedrooms with a 3rd bedroom as a box room. Modern family bathroom.

Location: The property is set in a great location for all local amenities and within walking distance to good local schools and parks.

Reception One 7.33m x 3.50

Double glazaed bay window to front elevation. TV Point. Radiator.

Dining Room 2.97m x 2.54

Double glaed window to side elevation. Laminate floor.

Kitchen 2.84m x 1.99m

Fitted with a range of wall and base units incorporating s stainless sink with mixer tap. Electric hob with oven below. Double glazed window to rear. PVC back door to access the garden.

Landing

Double glazed window.

Bedroom One 4.15m x 3.37m

Double glazed bay window to front elevation. Radiator.

Bedroom Two 3.22m x 2.88m

Double glazed window to rear elevation. Radiator.

Bedroom Three 2.13m x 2.10

Double glazed window to front elevation. Radiator.

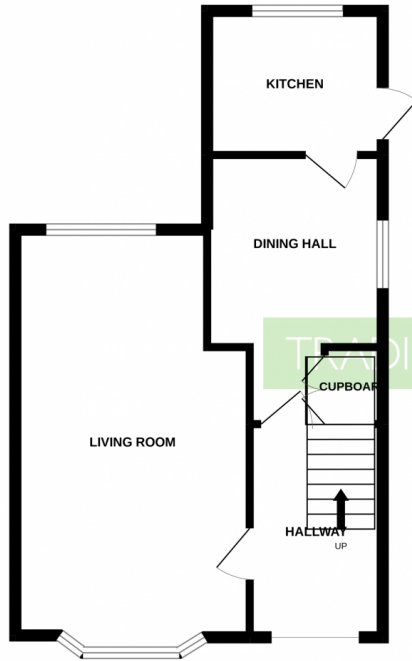
Bathroom

Double glazed frosted window. Three piece white bathroom suite comprising:- panel bath with shower over, pedestal wash hand basin and WC.

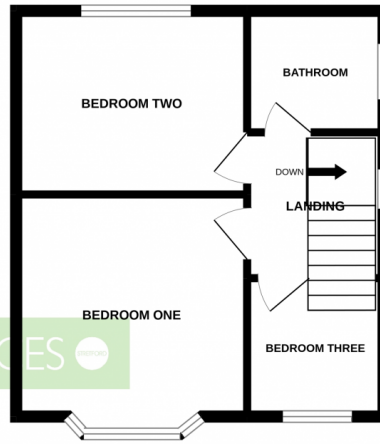
Garden

Gated driveway to the front. Garage and enclosed garden to the rear.

GROUND FLOOR



1ST FLOOR



Whilst every attempt has been made to ensure the accuracy of the floorplan contained here, measurements of doors, windows, rooms and any other items are approximate and no responsibility is taken for any error, omission or mis-statement. This plan is for illustrative purposes only and should be used as such by any prospective purchaser. The services, systems and appliances shown have not been tested and no guarantee as to their operability or efficiency can be given.
Made with Metropix ©2022

