

25  
YEARS

SERVING  
BEACONSFIELD  
SINCE 1998



60 Howard Crescent, Seer Green

Guide Price £1,150,000

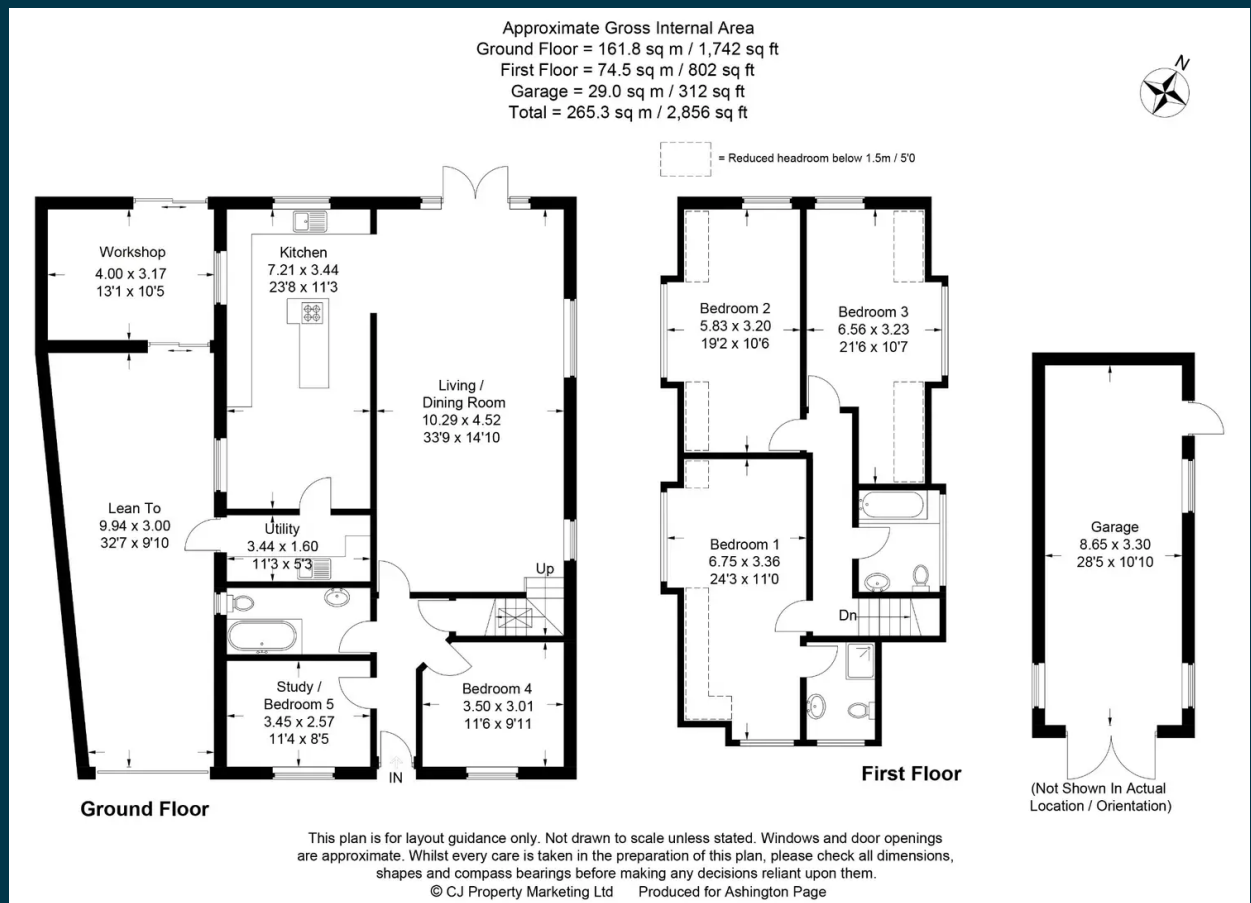
*Ashington Page*



A spacious 4 bedroom, detached family home in a sought after location with access to miles of countryside walks from the doorstep. This fabulous home offers generous accommodation as it is, but also has planning permission approved to extend further. Seer Green is a friendly village with good local amenities including schools, shops, gastro pub and it's own station on the Chiltern line to London Marylebone in around 30 minutes.

Double length garage with light and power.  
 Directions: Sat Nav HP9 2XP  
 EPC rating: C  
 Tenure: Freehold

These particulars are for guidance only. They are prepared and issued in good faith and are intended to give a fair summary of the property. Any description should not be relied on as a statement or representation of fact or that the property, or its services, are in good condition. The photographs show only certain parts of the property at the time they were taken. Any areas, measurements or distance given are approximate only. Any reference to alterations to, or use of, any part of the property is not a statement that any necessary planning, building regulations or other consent has been obtained. These matters must be verified by an intending purchaser. All statements contained in these particulars in relation to the property are made without responsibility of Ashington Page or its clients. Neither Ashington Page (nor any joint agents) nor any of their employees has any authority to make or give any representation or warranty whatsoever in relation to the property



01494 680018  
[info@ashingtonpage.co.uk](mailto:info@ashingtonpage.co.uk)  
[www.AshingtonPage.co.uk](http://www.AshingtonPage.co.uk)

