



2 Bedroom Top Floor Apartment Offers Over £150,000

Boatman Close, Oakhurst, Swindon, Wiltshire , SN25 2HL

**mcfarlane**  
property.com

## 2 Bedrooms Top Floor Apartment North Swindon

- 2 Bedroom Apartment
- Communal
- Lounge/Diner
- Kitchen

SPACIOUS TOP FLOOR APARTMENT - NO ONWARD CHAIN - OFFERED TO THE MARKET FOR INVESTORS ONLY - DESIRABLE LOCATION - TENANT IN SITU - MUST BE VIEWED

Situated in one of North Swindon's most sought-after and rarely available locations, is this extremely spacious and light two double bedroom top floor apartment. Externally the property boasts communal gardens and an allocated parking space.

The accommodation is well presented throughout and comprises an entrance hall, impressive living room, fitted kitchen, two double bedrooms and a modern family bathroom suite.

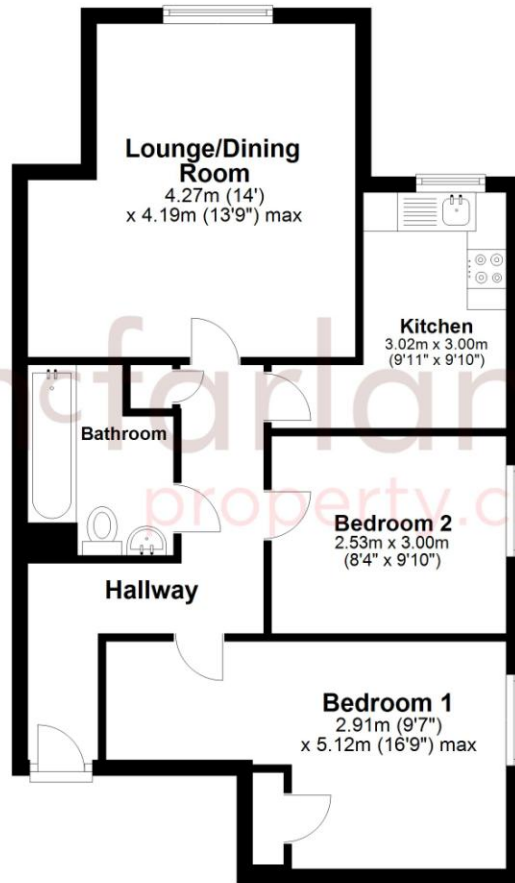
Externally the property boasts lovely communal gardens and an allocated parking space. Please note, the property is only currently available to investors only.





## Top Floor

Approx. 56.3 sq. metres (605.5 sq. feet)



Total area: approx. 56.3 sq. metres (605.5 sq. feet)


We   
where you  
**LIVE**

Our team are friendly, experienced and all from here. They know it better than they do their own living rooms and can help you find what you're looking for because **we love where we live.**

We would be delighted to show you around this property.

**Because every home  
needs a personal touch.**

**If you would like to view this  
property then please get in touch.**

 01793 611841

 [swindon@mcfarlaneproperty.com](mailto:swindon@mcfarlaneproperty.com)

[mcfarlaneproperty.com](http://mcfarlaneproperty.com)

**mcfarlane**  
property.com

### Swindon.

The Village Centre  
Redhouse SN25 2FW

 01793 296600

### Old Town.

28-30 Wood Street  
Swindon SN1 4AB

 01793 611841

### Cricklade.

102 High Street  
Cricklade SN6 6AA

 01793 751044

### Marlborough.

106 High Street  
Marlborough SN8 1LT

 01672 514380

Agents Note: Whilst every care has been taken to prepare these sales particulars, they are for guidance purposes only. All measurements are approximate and are for general guidance purposes only and whilst every care has been taken to ensure their accuracy, they should not be relied upon and potential buyers are advised to recheck the measurements