

4 Pembroke Court



4 Pembroke Court

Two bedroom pre owned apartment

A spacious two bedroom apartment on the ground floor with a dual aspect, open plan kitchen/dining room that leads out through French doors on to a large terrace.

The master bedroom has fitted wardrobes and an en suite shower room and there is a separate guest bathroom.

Property specifications

- SieMatic kitchen with integrated appliances and Corian worktops
- Open living/dining room
- Spacious master bedroom with fitted wardrobes and walk in en suite shower
- Separate guest bathroom
- Double aspect lounge/kitchen
- Large terrace
- Underground car parking with lift
- Private outlook

Guide Price £710,000 (other fees apply)

Monthly management fee: £986.71

Council tax band: F

Viewing by appointment with the sales office.

01784 557 545

cooperssales@audleyvillages.co.uk



Show home images used for illustration purposes only

4 Pembroke Court

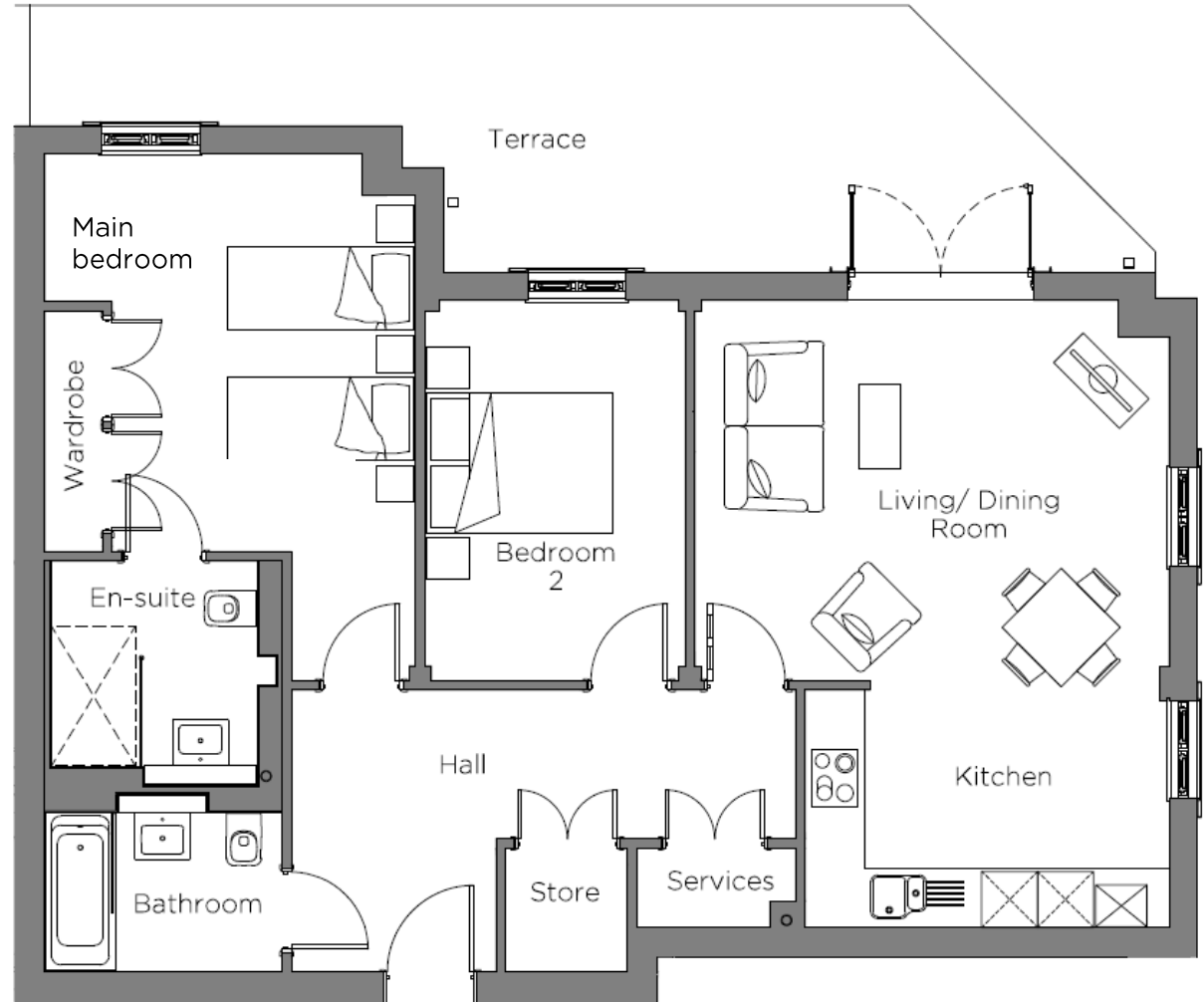
Internal Measurements

	Metric (m)	Imperial (ft)
Living/Dining Room	5.10 x 4.09	16'9" x 13'5"
Kitchen	3.91 x 2.55	12'10" x 8'4"
Main Bedroom	4.28 x 3.99	14'0" x 13'1"
Bedroom 2	4.09 x 2.80	13'5" x 9'2"
Balcony (approx.)	5.45 x 2.87	17'11" x 9'5"

Total Sq. Ft 970

Built in wardrobes in bedrooms have not been included in the overall dimensions. Maximum measurements shown.

Score	Energy rating	Current	Potential
92+	A		
81-91	B	84 B	84 B
69-80	C		
55-68	D		
39-54	E		
21-38	F		
1-20	G		



These pages are intended for marketing purposes only. Designs vary according to plot and all details should be checked at the Sales office. April 2022

