



PRINCIPAL TOWER

LONDON EC2



PRINCIPAL TOWER |
2 PRINCIPAL PLACE | LONDON

£1,255,000 | LEASEHOLD

2607 Principal Tower, 2 Principal Place, London EC2A 2FE

1 Bedroom | En Suite Bathroom | Kitchen | Balcony | Lift

 020 3883 3333  Info@Principaltower.com



PRINCIPAL TOWER
LONDON EC2

A PRINCIPAL ADDRESS

Principal Tower offers the opportunity to own an architectural masterpiece, equivalent to a priceless piece of art, that will give constant pleasure and lasting value.

Designed by Foster + Partners, Principal Tower signifies the epitome of understated elegance.

This stunning 1 bedroom apartment with study comprises of approximately 519 sq ft offering open plan living/kitchen room, 1 bedroom, 1 en-suite and a balcony.

Unit #	Type	Enclosed SQFT	Aspect	Listed Price	Listed Price £/sqft
2607	1 Bed	519	S & E	£1,255,000	£2,418



020 3883 3333

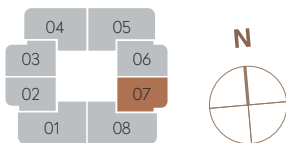
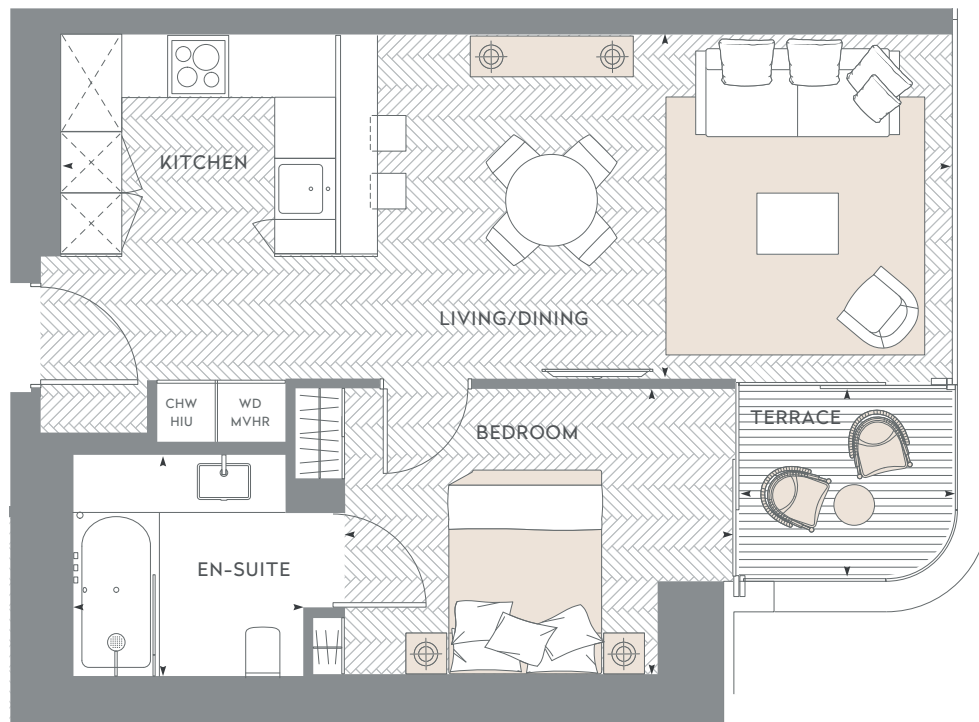


Info@Principaltower.com

APARTMENT 07

1 BEDROOM
FLOORS 24-30

APARTMENT	48.2m ² / 519ft ²	Living/dining	5.69 x 3.33m / 18'8" x 10'9"
TERRACE	3.8m ² / 40ft ²	Kitchen	3.11 x 3.33m / 10'2" x 10'11"
		Bedroom	3.83 x 2.80m / 12'6" x 9'2"
		En-suite	2.07 x 2.21m / 6'10" x 7'3"
		Terrace	2.12 x 1.87m / 6'11" x 6'1"



KEY

HIU	Heat Interface Unit	AV	Audio & Visual
CHW	Chilled Water	WD	Washer/Dryer
MVHR	Mechanical ventilation heat with recovery	White Goods	(Dishwasher, Fridge/ Freezer)

Scale 1:72  = 1m/39.3"



PRINCIPAL TOWER
LONDON EC2

BOOK APPOINTMENT TO VIEW

Principal Tower Sales
Office Apartment 205,
Principal Tower,
2 Principal Place,
Worship Street,
London,
EC2A 2BA

 020 3883 3333  Info@Principtower.com