



Unit 3

35 Shore Road, London, E9 7FL

**983 sq ft self-contained
ground floor commercial
unit for sale.**

983 sq ft
(91.32 sq m)

- Self-contained
- Shell and Core
- 999 Year Leasehold Sale
- London Fields Area
- Good Transport Links

Unit 3, 35 Shore Road, London, E9 7FL

Summary

Available Size	983 sq ft
Price	£495,000
Business Rates	Yet to be assessed
Service Charge	£2.50 per sq ft
VAT	Not applicable
Legal Fees	Each party to bear their own costs
EPC Rating	Upon enquiry

Description

An exclusive new mixed-use development comprising 13 luxury apartments and 7 self-contained E Class (office) commercial units in the popular London Fields neighbourhood of Hackney. Situated over the first, ground and lower ground floor, the units vary in sizes from 983 Sqft to 2615 Sqft.

Location

Shore Road is located just off Well Street near its junction with Mare Street. London Fields Station is 6 minutes walk with trains to Liverpool Street taking 9 minutes, alternatively reached directly by bus within 30 minutes. Shoreditch is reached by bus in 20 minutes. The area hosts an abundance of independent eateries, and bars around Mare Street and the fashionable Broadway Market which is reached within 10 minutes walk.

Accommodation

The accommodation comprises of the following

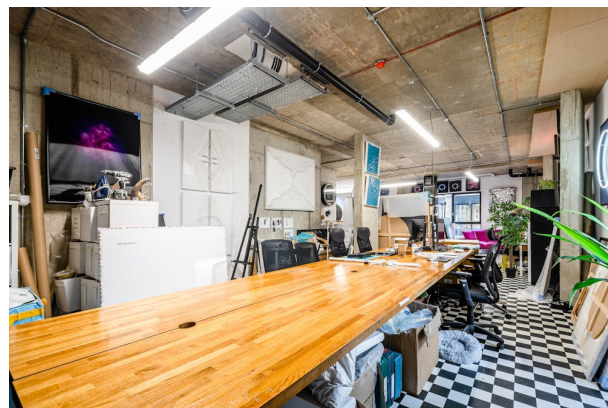
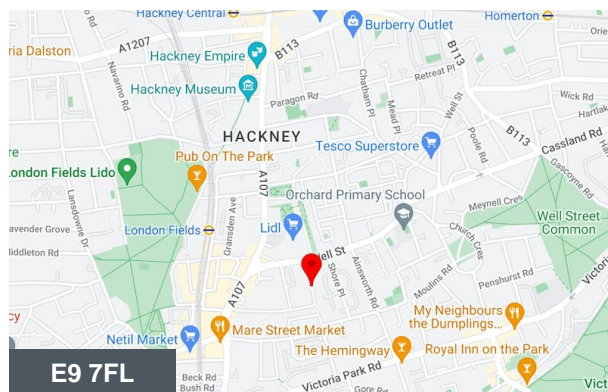
Name	sq ft	sq m	Price	Service charge
Ground - Unit 3	983	91.32	£495,000	£2.50 /sq ft
Total	983	91.32		

Viewings

My prior appointment with Fyfe Mcdade Commercial.

Terms

The units are available to purchase on a new 999 year leasehold. All terms and conditions by negotiation.

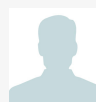


Viewing & Further Information



George Sarantis

020 7613 4044 | 0731 1077 549
george@fyfemcdade.com



Andrew Browne (Inactive)

020 7613 4044
andrew@fyfemcdade.com



Quba Medford

020 7613 4044 | 07912883110
quba@fyfemcdade.com

Energy performance certificate (EPC)

COMMERCIAL UNITS 1-7 CONSTRUCTED
AUGUST 2020
35 Shore Road
LONDON
E9 7TA

Energy rating

B

Valid until: **17 August 2030**

Certificate number: **0980-9296-0320-7365-5164**

Property type

B1 Offices and Workshop businesses

Total floor area

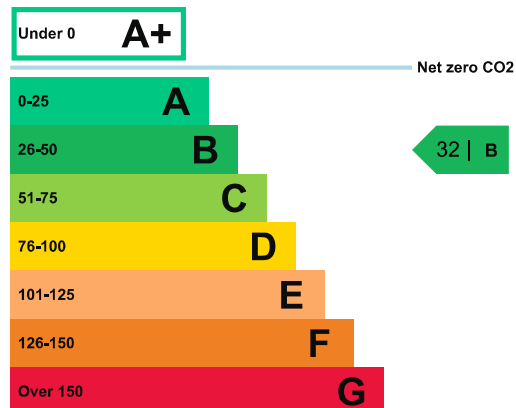
926 square metres

Rules on letting this property

Properties can be let if they have an energy rating from A+ to E.

Energy efficiency rating for this property

This property's current energy rating is B.



Properties are also given a score. The larger the number, the more carbon dioxide (CO₂) your property is likely to emit.

How this property compares to others

Properties similar to this one could have ratings:

If newly built

27 | B

If typical of the existing stock

80 | D

Properties are given a rating from A+ (most efficient) to G (least efficient).

Contacting the assessor and accreditation scheme

This EPC was created by a qualified energy assessor.

If you are unhappy about your property's energy assessment or certificate, you can complain to the assessor directly.

If you are still unhappy after contacting the assessor, you should contact the assessor's accreditation scheme.

Accreditation schemes are appointed by the government to ensure that assessors are qualified to carry out EPC assessments.

Assessor contact details

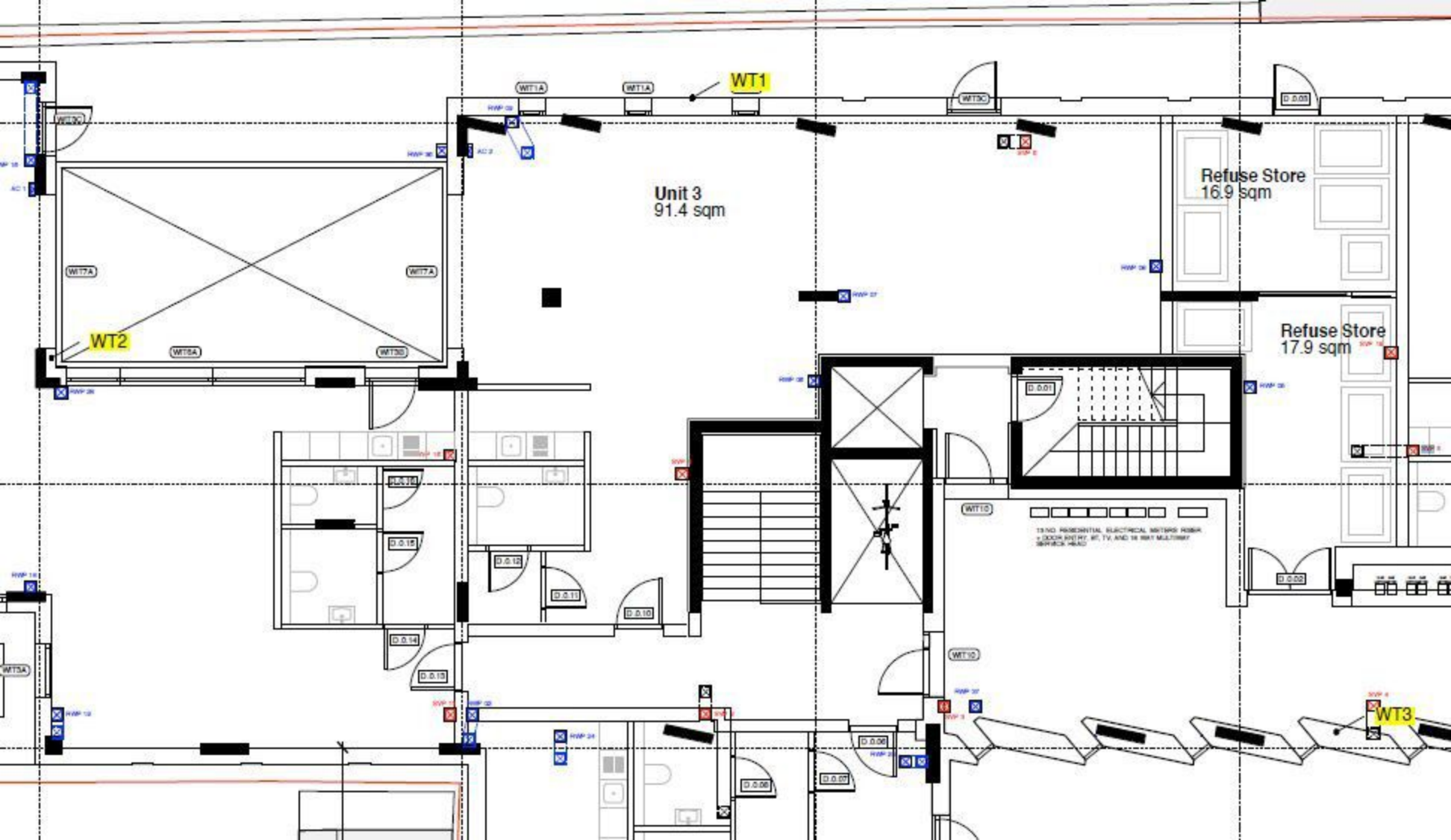
Assessor's name	Steve McLean-C.Eng MSc MIMechE MIEE.
Telephone	07881 811 728
Email	steve.mclean@led-ltd.co.uk

Accreditation scheme contact details

Accreditation scheme	CIBSE Certification Limited
Assessor ID	LCEA016918
Telephone	020 8772 3649
Email	epc@cibsecertification.org

Assessment details

Employer	LED - Low Energy Design Ltd
Employer address	1 Blatchington Road, Hove, East Sussex, BN3 3YP
Assessor's declaration	The assessor is employed by the property owner.
Date of assessment	17 August 2020
Date of certificate	18 August 2020



Unit 3
91.4 sqm

Refuse Store
16.9 sqm

Refuse Store
17.9 sqm

WT2

WT1

WT3

13 NO. PARALLEL ELECTRICAL METERS PERM.
+ LOCK ENTRY, 8F, TV, AND 16 RPT MULTIRPT
SERVICE HEAD

D.0.17

D.0.18

D.0.14

D.0.15

D.0.12

D.0.11

D.0.10

WT10

WT12

D.0.08

D.0.07

D.0.01

D.0.01

D.0.02

D.0.03

D.0.04

D.0.05

D.0.06

D.0.07

D.0.08

D.0.09

D.0.10

D.0.11

D.0.12

WT11A

WT11A

WT13C

WT17A

WT17A

WT15A

WT13D

WT13C

WT13C

WT13C

WT13C

WT13C

WT13C

WT13C

WT13C

WT13C

WT13C

WT13C

WT13C

WT13C

WT13C

WT13C

WT13C

WT13C

WT13C

WT11A

WT11A

WT13C

WT17A

WT17A

WT15A

WT13D

WT13C

WT13C

WT13C

WT13C

WT13C

WT13C

WT13C

WT13C

WT13C

WT13C

WT13C

WT13C

WT13C

WT13C

WT13C

WT13C

WT13C

WT13C

WT11A

WT11A

WT13C

WT17A

WT17A

WT15A

WT13D

WT13C

WT13C

WT13C

WT13C

WT13C

WT13C

WT13C

WT13C

WT13C

WT13C

WT13C

WT13C

WT13C

WT13C

WT13C

WT13C

WT13C

WT13C

WT11A

WT11A

WT13C

WT17A

WT17A

WT15A

WT13D

WT13C

WT13C

WT13C

WT13C

WT13C

WT13C

WT13C

WT13C

WT13C

WT13C

WT13C

WT13C

WT13C

WT13C

WT13C

WT13C

WT13C

WT13C

WT11A

WT11A

WT13C

WT17A

WT17A

WT15A

WT13D

WT13C

WT13C

WT13C

WT13C

WT13C

WT13C

WT13C

WT13C

WT13C

WT13C

WT13C

WT13C

WT13C

WT13C

WT13C

WT13C

WT13C

WT13C

WT11A

WT11A

WT13C

WT17A

WT17A

WT15A

WT13D

WT13C

WT13C

WT13C

WT13C

WT13C

WT13C

WT13C

WT13C

WT13C

WT13C

WT13C

WT13C

WT13C

WT13C

WT13C

WT13C

WT13C

WT13C

WT11A

WT11A

WT13C

WT17A

WT17A

WT15A

WT13D

WT13C

WT13C

WT13C

WT13C

WT13C

WT13C

WT13C

WT13C

WT13C

WT13C

WT13C

WT13C

WT13C

WT13C

WT13C

WT13C

WT13C

WT13C

WT11A

WT11A

WT13C

WT17A

WT17A

WT15A

WT13D

WT13C

WT13C

WT13C

WT13C

WT13C

WT13C

WT13C

WT13C

WT13C

WT13C

WT13C

WT13C

WT13C

WT13C

WT13C

WT13C

WT13C

WT13C

WT11A

WT11A

WT13C

WT17A

WT17A

WT15A

WT13D

WT13C

WT13C

WT13C

WT13C

WT13C

WT13C

WT13C

WT13C

WT13C

WT13C

WT13C

WT13C

WT13C

WT13C

WT13C

WT13C

WT13C

WT13C

WT11A

WT11A

WT13C

WT17A

WT17A

WT15A

WT13D

WT13C

WT13C

WT13C

WT13C

WT13C

WT13C

WT13C

WT13C

WT13C

WT13C

WT13C

WT13C

WT13C

WT13C

WT13C

WT13C

WT13C

WT13C

WT11A

WT11A

WT13C

WT17A

WT17A

WT15A

WT13D

WT13C

WT13C

WT13C

WT13C

WT13C

WT13C

WT13C

WT13C

WT13C

WT13C

WT13C

WT13C

WT13C

WT13C

WT13C

WT13C

WT13C

WT13C

WT11A

WT11A

WT13C

WT17A

WT17A

WT15A

WT13D

WT13C

WT13C

WT13C

WT13C

WT13C

WT13C

WT13C

WT13C

WT13C

WT13C

WT13C

WT13C

WT13C

WT13C

WT13C

WT13C

WT13C

WT13C

WT11A

WT11A

WT13C

WT17A

WT17A

WT15A

WT13D

WT13C

WT13C

WT13C

WT13C

WT13C

WT13C

WT13C

WT1